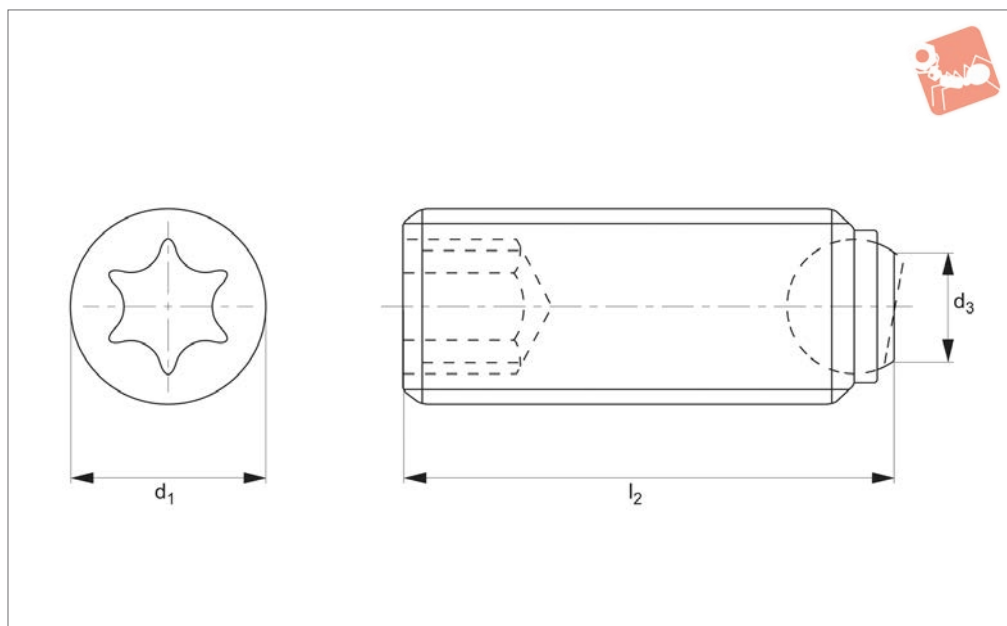


Thrust Screws - Headless -Torx drive

ball ended - flat - metal

Thrust Screws



34048

THRUST SCREWS

Material

Steel type-

Body: heat treated steel, 1200 +/-100 N/mm².

Ball: ball bearing steel hardened.

Stainless steel type-

Body: stainless steel 1.4305 (AISI 303).

Ball: stainless steel, hardened.

Technical Notes

For clamping, tightening or supporting of surfaces that are not exactly parallel.

* stated load capacity relate to steel version only.

Torx drive for improved installation.

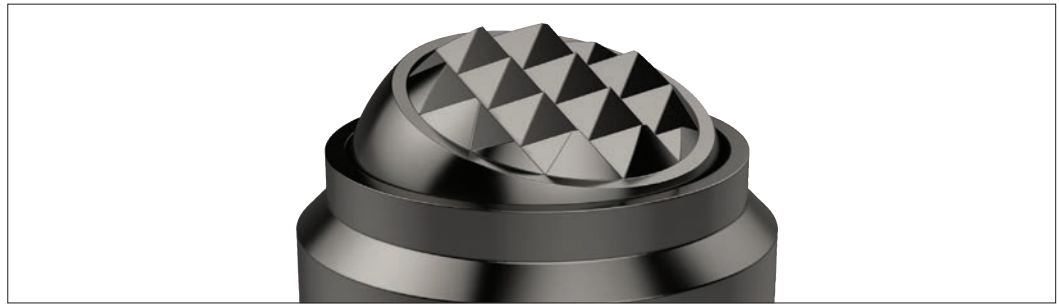
Tips

Ball not secured against rotation. For other types see following pages.

Order No.	Material	Ball type	d ₁	l ₁	Ball dia.	A/F	Static load kN max.	Weight g
34048.W1542	Steel	Flat, plain	M4	0.5	1.8	8	3.5	5.6
34048.W1544	Steel	Flat, plain	M4	0.5	1.8	8	3.5	9.6
34048.W1552	Steel	Flat, plain	M5	0.6	2.2	10	4.5	7.5
34048.W1554	Steel	Flat, plain	M5	1.1	2.2	10	4.5	11.5
34048.W1562	Steel	Flat, plain	M6	1.5	3.2	15	9.0	10.0
34048.W1564	Steel	Flat, plain	M6	2.5	3.2	15	9.0	16.0
34048.W2542	Stainless	Flat, plain	M4	0.5	1.8	8	3.5	5.6
34048.W2544	Stainless	Flat, plain	M4	0.5	1.8	8	3.5	9.6
34048.W2552	Stainless	Flat, plain	M5	0.6	2.2	10	4.5	7.5
34048.W2554	Stainless	Flat, plain	M5	1.1	2.2	10	4.5	11.5
34048.W2562	Stainless	Flat, plain	M6	1.5	3.2	15	9.0	10.0
34048.W2564	Stainless	Flat, plain	M6	2.5	3.2	15	9.0	16.0

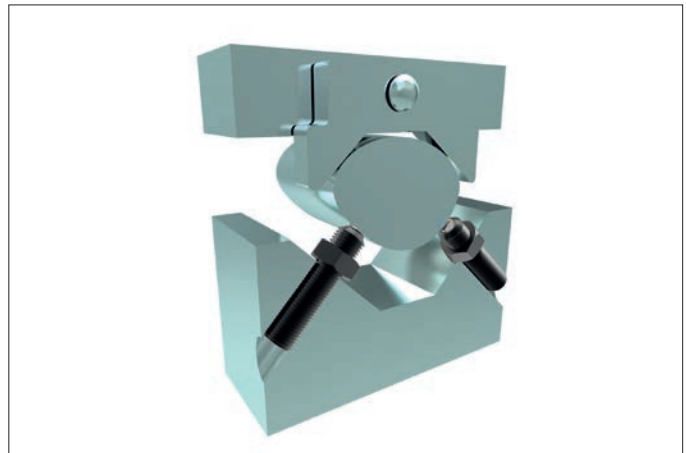


Clamping, supporting and aligning non-parallel and uneven surfaces is greatly simplified with the use of Wixroyd self-aligning pads and thrust screws. Available with ridged faces for improved holding of cast components, or plastic faces for holding more delicate parts.



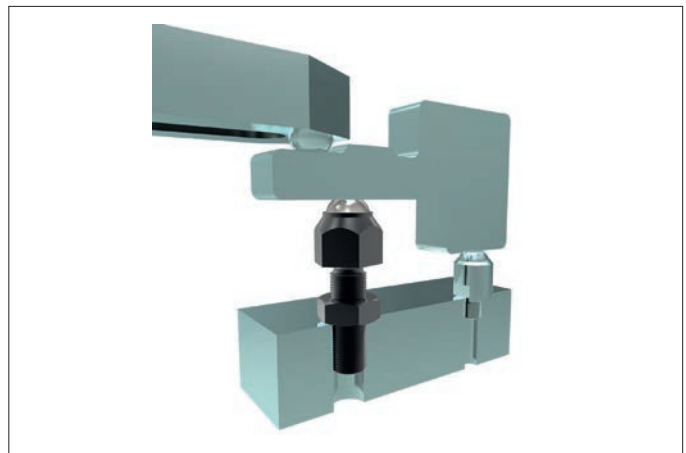
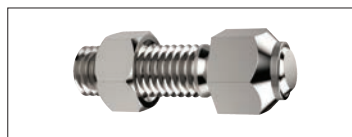
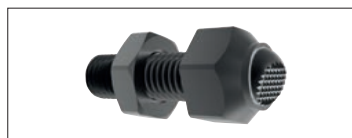
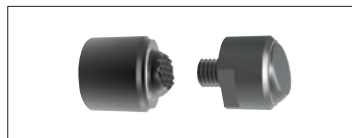
Self-aligning Thrust Screws

34000 to 34060 - Self-aligning thrust screws in sizes M6 to M24, ideal for clamping or supporting non-parallel surfaces.



Self-aligning Pads

34080 to 34121 - Self-aligning pads, both male and female mounting, ideal for accommodating variations between parts in fixtures.



Thrust Screws

34140 to 34160 - Thrust screws, with either brass or thermoplastic pads, are suitable for gentle clamping and positioning more delicate parts.

