



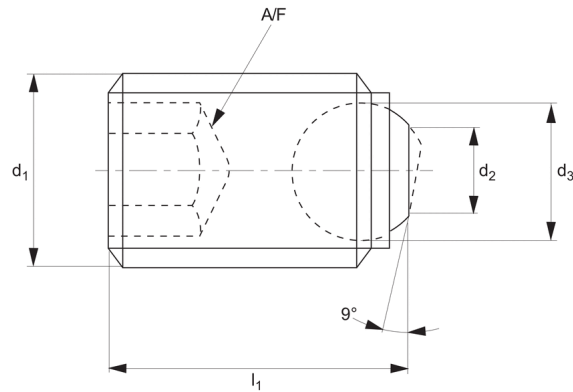
# Thrust Screws - Ball Ended

headless - short -flat faced ball

## Thrust Screws



THRUST SCREWS



**34060**

### Material

Body: steel, heat-treated,  $1200 \pm 100 \text{ N/mm}^2$ .

Ball: ball bearing steel, hardened.

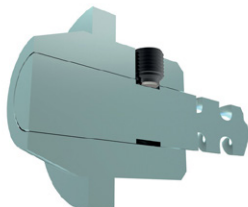
### Technical Notes

These short ball ended thrust screws are

particularly suited for use with parallel shanks DIN 1835E, in combination with either Whistle Notch or Weldon Tool Holding fixtures.

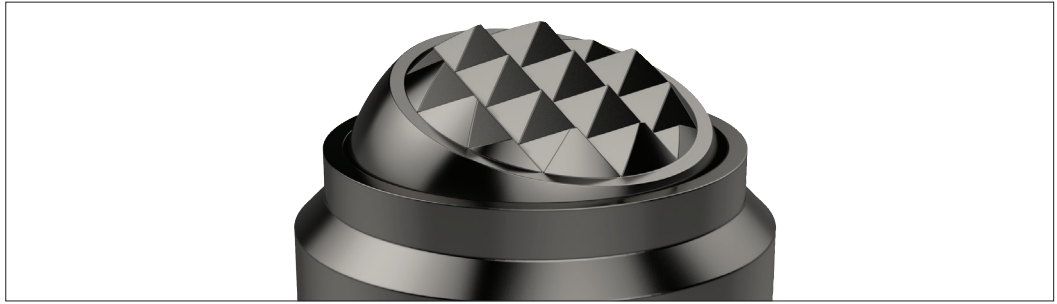
Maximised load transmission due to movable ball.

Order No.	Ball type	$d_1$	$d_2$	$d_3$	$l_1$	A/F	Static load kN max.	Weight g
<b>34060.W0641</b>	Flat, Plain	M14	7.2	8.5	16	6	30	13
<b>34060.W0660</b>	Flat, Plain	M16	7.2	8.5	16	8	30	16
<b>34060.W0682</b>	Flat, Plain	M18x2	10.7	12.0	20	10	60	25
<b>34060.W0692</b>	Flat, Plain	M20x2	10.7	12.0	20	10	60	32
<b>34060.W0693</b>	Flat, Plain	M20x2	10.7	12.0	25	10	60	42
<b>34060.W0730</b>	Flat, Plain	M24x2	13.5	15.0	25	12	90	59



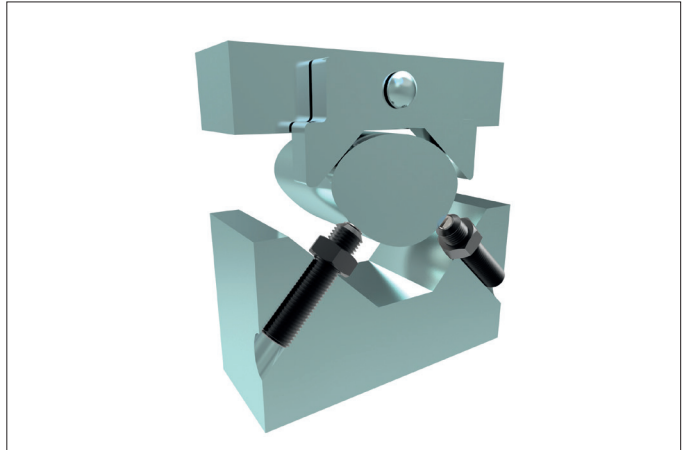


Clamping, supporting and aligning non-parallel and uneven surfaces is greatly simplified with the use of Wixroyd self-aligning pads and thrust screws. Available with ridged faces for improved holding of cast components, or plastic faces for holding more delicate parts.



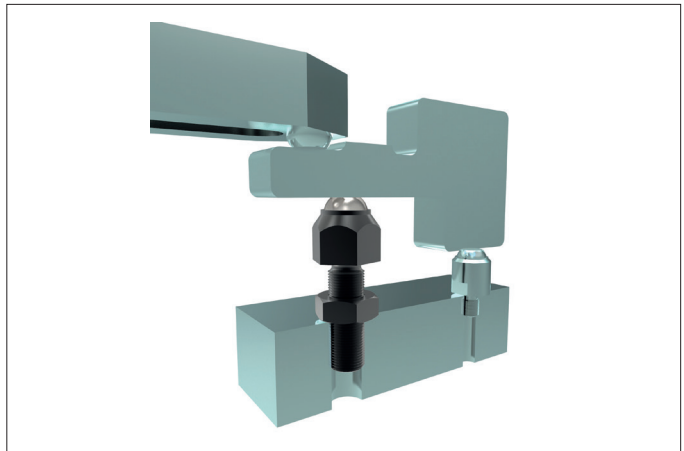
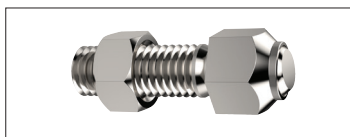
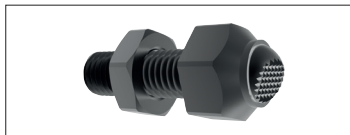
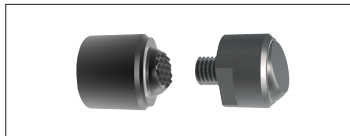
### Self-aligning Thrust Screws

**34000 to 34060** - Self-aligning thrust screws in sizes M6 to M24, ideal for clamping or supporting non-parallel surfaces.



### Self-aligning Pads

**34080 to 34121** - Self-aligning pads, both male and female mounting, ideal for accommodating variations between parts in fixtures.



### Thrust Screws

**34140 to 34160** - Thrust screws, with either brass or thermoplastic pads, are suitable for gentle clamping and positioning more delicate parts.

