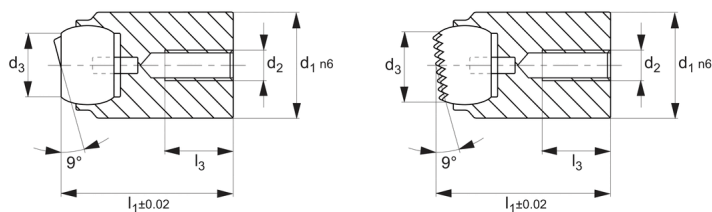


# Self-Aligning Pads

## Self-Aligning Pads



# Self-Aligning Pads



## 34091

SELF-ALIGNING PADS

### Material

Spring element: thermoplastic PUR.  
Ball: Ball-bearing steel, hardened, bright.  
stainless steel 1.3541, nickel-plated.  
Body: Heat-treated steel, tempered, phos-

phated. stainless steel 1.4057, heat-treated.

### Technical Notes

Ball protected against rotating.

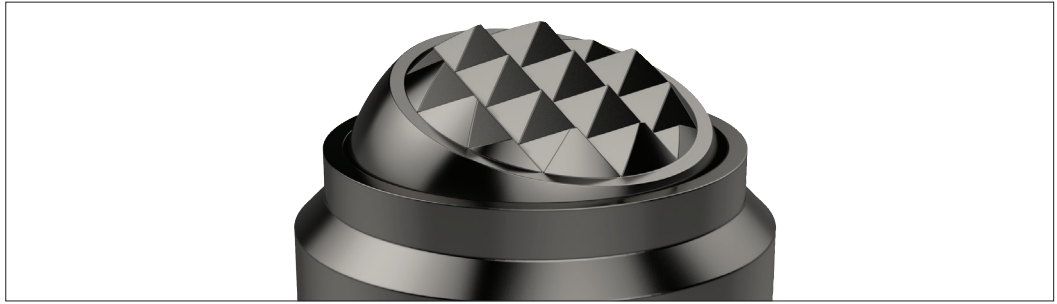
loading capacity valid for steel and stainless steel design.

Order No.	Material	Ball	d <sub>1</sub>	d <sub>2</sub>	d <sub>3</sub>	Weight g
34091.W0412	Steel Plain Surface	10	12 tol. n6	M 3	7.2	14
34091.W0418	Steel Plain Surface	16	18 tol. n6	M 4	10.5	40
34091.W0428	Steel Plain Surface	25	28 tol. n6	M 5	20.0	150
34091.W0452	Stainless Plain Surface	10	12 tol. n6	M 3	7.2	14
34091.W0458	Stainless Plain Surface	16	18 tol. n6	M 4	10.5	40
34091.W0468	Stainless Plain Surface	25	28 tol. n6	M 5	20.0	150
34091.W0712	Steel Ribbed Surface	10	12 tol. n6	M 3	7.2	14
34091.W0718	Steel Ribbed Surface	16	18 tol. n6	M 4	10.5	40
34091.W0728	Steel Ribbed Surface	25	28 tol. n6	M 5	20.0	150

Order No.	l <sub>1</sub>	l <sub>3</sub> max.	H7 diameter	Load capacity for static load kN max.	Depth min.	Tightening torque Nm max.
34091.W0412	17	3.2	12	10	12	1.3
34091.W0418	23	4.0	18	25	14	2.9
34091.W0428	34	6.0	28	90	22	6.0
34091.W0452	17	3.2	12	10	12	1.3
34091.W0458	23	4.0	18	25	14	2.9
34091.W0468	34	6.0	28	90	22	6.0
34091.W0712	17	3.2	12	10	12	1.3
34091.W0718	23	4.0	18	25	14	2.9
34091.W0728	34	6.0	28	90	22	6.0

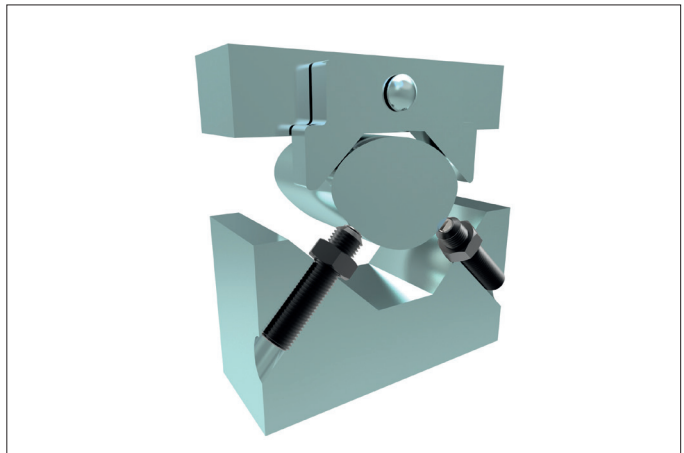


Clamping, supporting and aligning non-parallel and uneven surfaces is greatly simplified with the use of Wixroyd self-aligning pads and thrust screws. Available with ridged faces for improved holding of cast components, or plastic faces for holding more delicate parts.



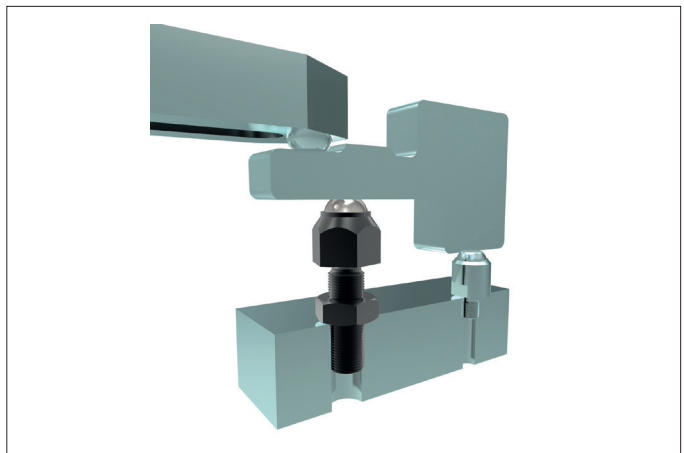
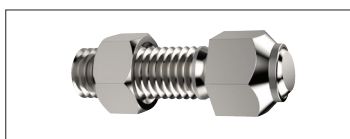
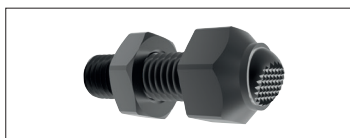
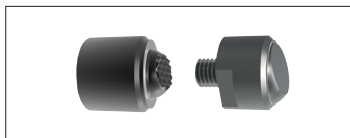
### Self-aligning Thrust Screws

**34000 to 34060** - Self-aligning thrust screws in sizes M6 to M24, ideal for clamping or supporting non-parallel surfaces.



### Self-aligning Pads

**34080 to 34121** - Self-aligning pads, both male and female mounting, ideal for accommodating variations between parts in fixtures.



### Thrust Screws

**34140 to 34160** - Thrust screws, with either brass or thermoplastic pads, are suitable for gentle clamping and positioning more delicate parts.

