

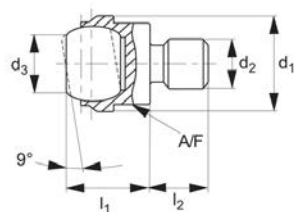


# Self-Aligning Pads

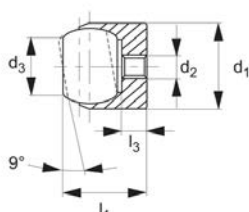
fixed - stainless steel



## Self-Aligning Pads



male thread, flat



female thread, flat



34101

SELF-ALIGNING PADS

### Material

Body: stainless steel (AISI 431, 1.4057), heat-treated.

Ball: stainless steel (1.3541), nickel plated.

### Technical Notes

These self-aligning pads serve as stops,

supports and thrust elements in jigs and fixtures. They can also be fitted to existing clamping elements.

### Tips

Max. load\* for female threads (see table) applies only when the minimum location hole depth is adhered to.

Ball secured against turning.

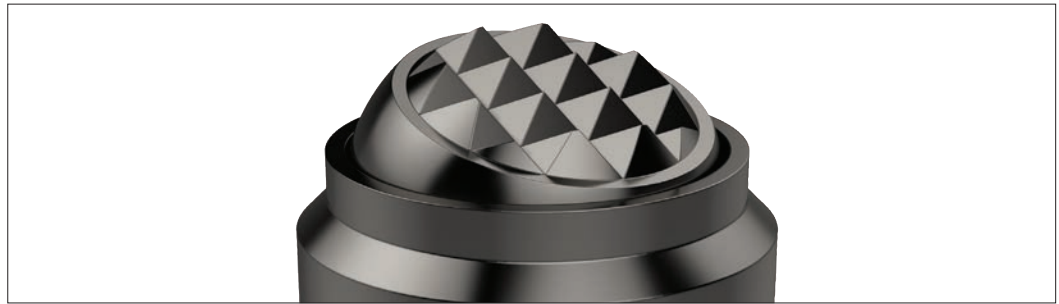
Order No.	Thread and face type		Ball dia.	d <sub>1</sub>	d <sub>2</sub>	d <sub>3</sub>	Weight g
34101.W0112	Male, Flat		10	13	M 6	7.2	12
34101.W0113	Male, Flat		10	13	M 8	7.2	13
34101.W0118	Male, Flat		16	20	M 8	10.5	39
34101.W0119	Male, Flat		16	20	M10	10.5	41
34101.W0120	Male, Flat		16	20	M12	10.5	44
34101.W0130	Male, Flat		25	30	M16	20.0	151
34101.W0150	Male, Flat		40	50	M20	34.5	489
34101.W0160	Male, Flat		40	50	M24	34.5	526
34101.W0452	Female, Flat		10	12 tol. n6	M 3	7.2	8
34101.W0458	Female, Flat		16	18 tol. n6	M 4	10.5	29
34101.W0468	Female, Flat		25	28 tol. n6	M 5	20.0	109

Order No.	l <sub>1</sub> ±0.02	l <sub>2</sub> -0.5	l <sub>3</sub> max.	A/F	Location hole tol. H7	Static load kN max.	Tightening torque Nm max.
34101.W0112	13	8	-	11	-	10	10.0
34101.W0113	13	8	-	11	-	10	25.0
34101.W0118	18	10	-	17	-	25	25.0
34101.W0119	18	10	-	17	-	25	46.0
34101.W0120	18	12	-	17	-	25	82.0
34101.W0130	27	16	-	27	-	90	206.0
34101.W0150	35	20	-	41	-	165	407.0
34101.W0160	35	24	-	41	-	165	698.0
34101.W0452	11	-	3.2	-	Ø12x6min	10*	1.3
34101.W0458	17	-	4.0	-	Ø18x8min	25*	2.9
34101.W0468	25	-	5.5	-	Ø28x13min	90*	6.0

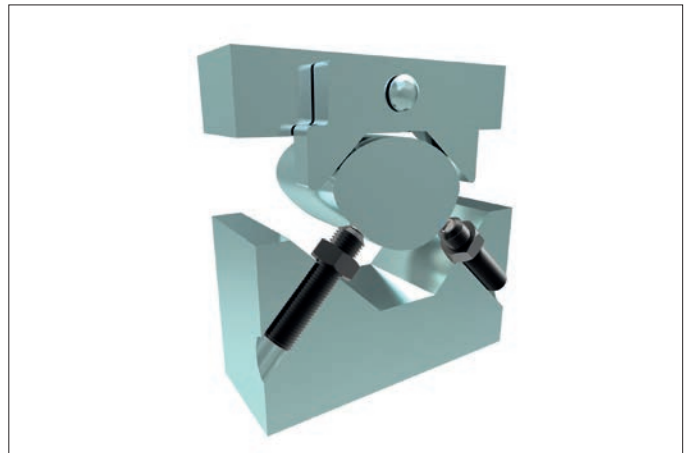


Clamping, supporting and aligning non-parallel and uneven surfaces is greatly simplified with the use of Wixroyd self-aligning pads and thrust screws. Available with ridged faces for improved holding of cast components, or plastic faces for holding more delicate parts.



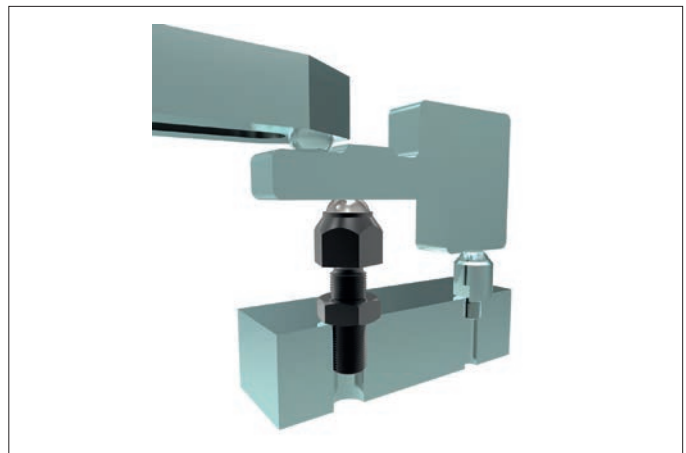
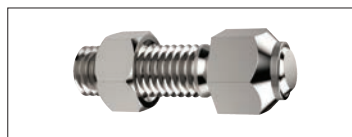
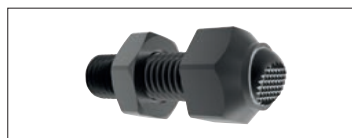
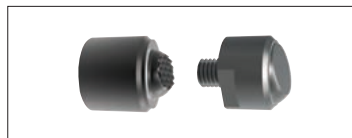
### Self-aligning Thrust Screws

**34000 to 34060** - Self-aligning thrust screws in sizes M6 to M24, ideal for clamping or supporting non-parallel surfaces.



### Self-aligning Pads

**34080 to 34121** - Self-aligning pads, both male and female mounting, ideal for accommodating variations between parts in fixtures.



### Thrust Screws

**34140 to 34160** - Thrust screws, with either brass or thermoplastic pads, are suitable for gentle clamping and positioning more delicate parts.

