

34600

THRUST SCREWS

Material

Steel, tensile strength 500N/mm², zinc plated, blue passivated.

Important Notes

Pad swivels 10° from vertical in all directions.

Order No.	d ₁	d ₂	l ₁ ≈	l ₂	t min.	Static load N	A/F
34600.W0016	16	M 8	19	7	9	5000	12
34600.W0020	20	M10	22	8	11	7500	15
34600.W0024	24	M12	25	10	12	10000	17
34600.W0030	30	M16	34	13	16	15000	24



A Range of features to suit your application

Product selection

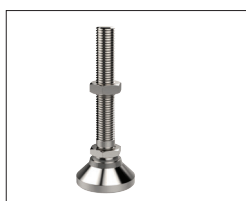
To ensure you select the most suitable levelling feet for your application consider the following questions:

- Tilting or fixed?
- Material required - steel, stainless or plastic?
- Load carrying capacity - light, medium or heavy duty?
(Review the quoted load capacities in the individual product tables).
- Bolt down feature required?
- Threaded or plastic insert required for mounting?
- Optional extras: hygiene seal, rubber pad, (subject to minimum quantity and selected model).

Key types



Fixed feet



Articulating levelling foot

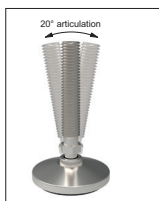


Machine mounts



Fulcrum screw

Available features



Articulation



Standard nylon base



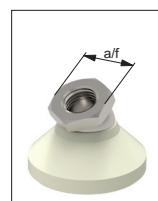
Anti-slip base



Bolt down base



Hygienic seal



Hex for easy installation

Materials



Steel thread - Nylon base



Stainless thread - Nylon base

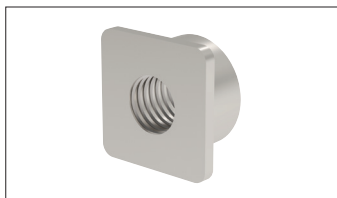


Steel thread - Steel base



Stainless thread - Stainless base

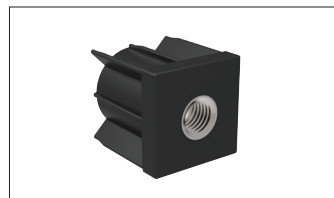
Mounting inserts



Weldable insert



Hollow section insert



Hollow section bushed insert

Additional technical information



▶ For applications under greater loads and requiring increased precision of adjustment see our range of Precision Height Adjusters.

▶ For applications exposed to extreme vibrations see our range of Anti-Vibration Mounts.

