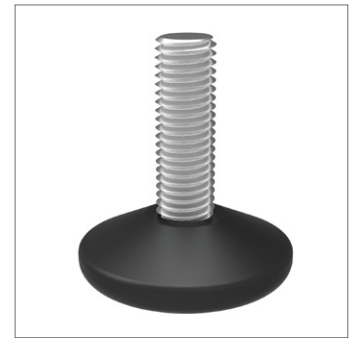
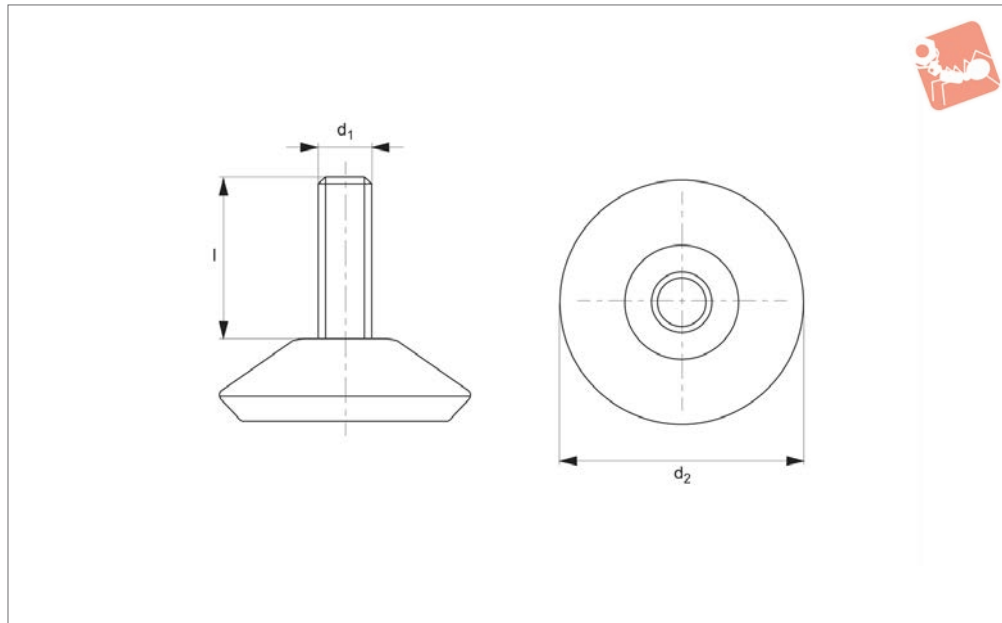




Fixed Feet non-tilt

Levelling Feet



34610

LEVELLING FEET

Material

Thread: steel, zinc plated.

Pad: thermoplastic, black.

Order No.	d ₁	d ₂	l
34610.W0030	M 8	30	27
34610.W0032	M 8	30	32
34610.W0041	M 8	40	22
34610.W0042	M 8	40	32
34610.W0044	M10	40	27
34610.W0046	M10	40	32
34610.W0056	M10	50	32
34610.W0066	M10	60	32
34610.W0067	M10	60	45



A Range of features to suit your application

Product selection

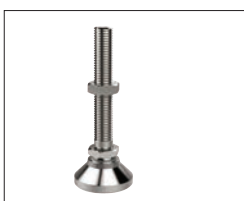
To ensure you select the most suitable levelling feet for your application consider the following questions:

- Tilting or fixed?
- Material required - steel, stainless or plastic?
- Load carrying capacity - light, medium or heavy duty?
(Review the quoted load capacities in the individual product tables).
- Bolt down feature required?
- Threaded or plastic insert required for mounting?
- Optional extras: hygiene seal, rubber pad, (subject to minimum quantity and selected model).

Key types



Fixed feet



Articulating levelling foot

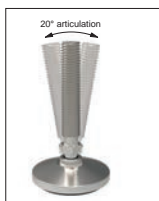


Machine mounts



Fulcrum screw

Available features



Articulation



Standard nylon base



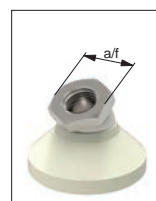
Anti-slip base



Bolt down base



Hygienic seal



Hex for easy installation

Materials



Steel thread - Nylon base



Stainless thread - Nylon base



Steel thread - Steel base



Stainless thread - Stainless base

Mounting inserts



Weldable insert



Hollow section insert



Hollow section bushed insert

Additional technical information



- ▶ For applications under greater loads and requiring increased precision of adjustment see our range of Precision Height Adjusters.
- ▶ For applications exposed to extreme vibrations see our range of Anti-Vibration Mounts.

