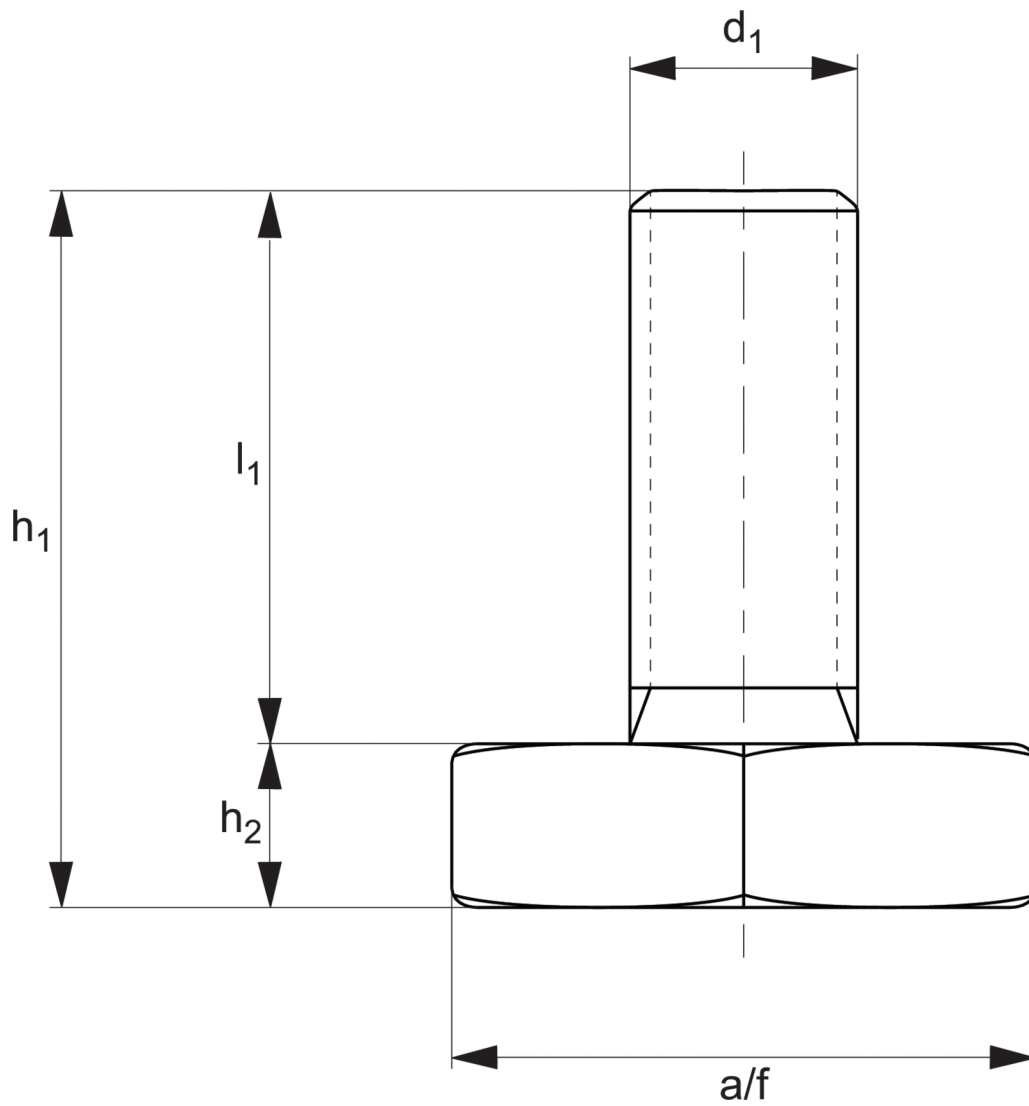


# Mini Levelling Feet

steel with hex. plastic base



# 34619



### Material

Galvanised steel stud with hexagon plastic base.

### Technical Notes

Load values shown are for static loads calculated at the half of the screw length. In the presence of vibrations or dynamic loads these values should be reduced.

Order no.	$d_1$	$a/f$	$l_1$	$h_1$	$h_2$	Static Load N
34619.W0800	M 8	25	25	33	8	2500
34619.W0801	M 8	25	35	43	8	2500
34619.W1000	M10	25	25	33	8	2500
34619.W1001	M10	25	35	43	8	2500

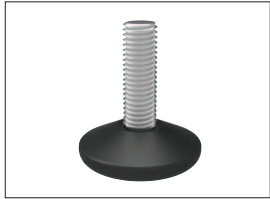


## A Range of features to suit your application

To ensure you select the most suitable levelling feet for your application consider the following questions:

### Product selection

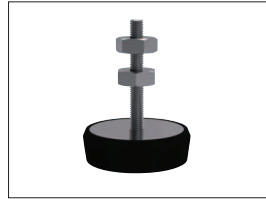
- Tilting or fixed?
- Material required - steel, stainless or plastic?
- Load carrying capacity - light, medium or heavy duty?  
(Review the quoted load capacities in the individual product tables).
- Bolt down feature required?
- Threaded or plastic insert required for mounting?
- Optional extras: hygiene seal, rubber pad, (subject to minimum quantity and selected model).



Fixed feet



Articulating levelling feet

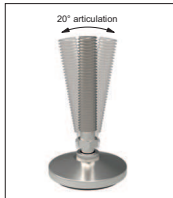


Machine mounts



Fulcrum screw

### Key Types



Articulation



Standard nylon base



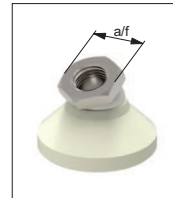
Anti-slip base



Bolt down base



Hygienic seal



Hex for easy installation

### Available features



Steel thread - Nylon base



Stainless thread - Nylon base



Steel thread - Steel base

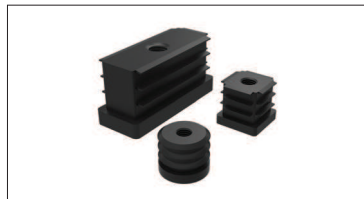


Stainless thread - Stainless base

### Materials



Weldable insert



Hollow section insert



Hollow section bushed insert

### Mounting inserts



For applications under greater loads and requiring increased precision of adjustment see our range of Precision Height Adjusters.



For applications exposed to extreme vibrations see our range of Anti-Vibration Mounts.

### Additional technical information