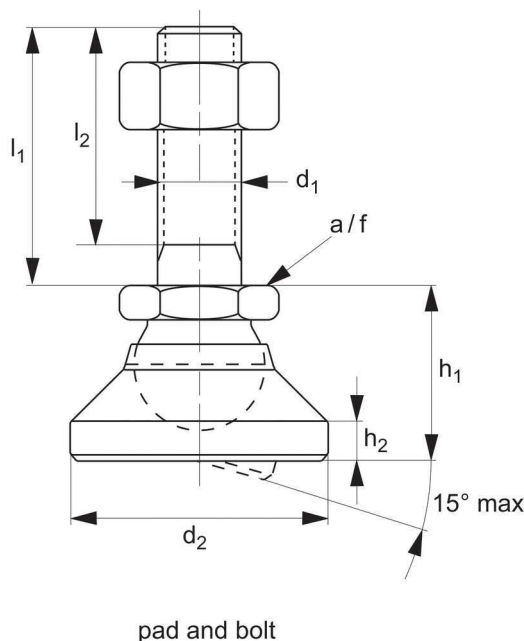
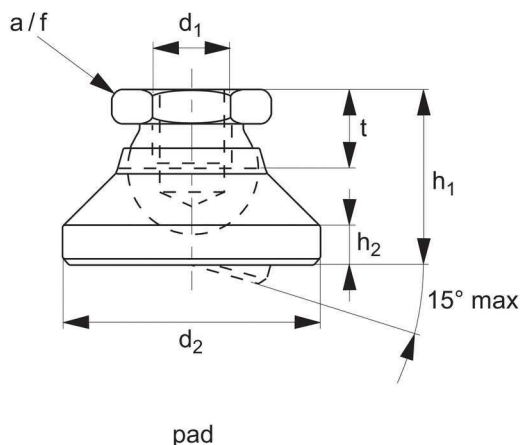


# Levelling Feet

pad and bolt steel or stainless



# 34701



Order No. Steel	Order No. Stainless	Type	d <sub>1</sub>	l <sub>1</sub>	d <sub>2</sub>	l <sub>2</sub>	h <sub>1</sub> ≈	h <sub>2</sub>	t	a/f	Max. stati c load steel kN	Max. stati c load stain less kN	g
34701.W0006	34701.W0206	Pad	M 6	-	20	-	14	2,5	5,0	10	10	8	15
34701.W0008	34701.W0208	Pad	M 8	-	25	-	18	4,0	7,0	13	18	14	33
34701.W0010	34701.W0210	Pad	M10	-	32	-	22	5,0	9,0	17	20	16	66
34701.W0012	34701.W0212	Pad	M12	-	40	-	26	6,0	11,0	19	35	28	112
34701.W0016	34701.W0216	Pad	M16	-	50	-	32	7,0	13,5	24	45	36	220
34701.W0020	34701.W0220	Pad	M20	-	60	-	42	8,0	17,0	30	55	44	413
34701.W0024	34701.W0224	Pad	M24	-	60	-	45	9,5	19,0	36	65	52	462
34701.W0410	34701.W0610	Pad and Bolt	M 6	60	20	57,0	14	2,5	-	10	10	8	29
34701.W0422	34701.W0622	Pad and Bolt	M 8	80	25	76,0	18	4,0	-	13	18	14	66
34701.W0438	34701.W0638	Pad and Bolt	M10	100	32	95,5	22	5,0	-	17	20	16	133
34701.W0442	34701.W0642	Pad and Bolt	M10	150	32	145,5	22	5,0	-	17	20	16	159
34701.W0452	34701.W0652	Pad and Bolt	M12	100	40	94,5	26	6,0	-	19	35	28	211
34701.W0456	34701.W0656	Pad and Bolt	M12	150	40	144,5	26	6,0	-	19	35	28	247
34701.W0468	34701.W0668	Pad and Bolt	M16	100	50	94,0	32	7,0	-	24	45	36	407
34701.W0472	34701.W0672	Pad and Bolt	M16	200	50	194,0	32	7,0	-	24	45	36	540
34701.W0482	34701.W0682	Pad and Bolt	M20	100	60	92,5	42	8,0	-	30	55	44	722
34701.W0488	34701.W0688	Pad and Bolt	M20	200	60	192,5	42	8,0	-	30	55	44	924
34701.W0495	34701.W0695	Pad and Bolt	M24	100	60	91,0	45	9,5	-	36	65	52	935
34701.W0498	34701.W0698	Pad and Bolt	M24	200	60	191,0	45	9,5	-	36	65	52	1231

## Material

### Steel type-

Pad: heat-treated, C35Pbk (ETG100) tempered (800-1000 N/mm<sup>2</sup>), blackened.

Ball: free cutting steel, 11SMnPn30k (1.0718) - ball hardened (550±50HV10), blackened.

Ball with bolt: heat-treated steel, blackened.

Lock nut: Steel blackened, DIN 934/ISO 4032.

### Stainless type-

Pad: stainless steel 1.4305 (AISI 303).

Ball: stainless steel 1.4305 (AISI 303).

Ball with bolt: stainless steel 1.4305 (AISI 303).

Lock nut: Stainless steel A2, DIN 934/ISO 4032.

## Tips

To be used as feet and thrust pads.



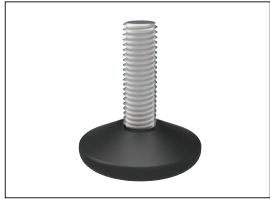


## A Range of features to suit your application

To ensure you select the most suitable levelling feet for your application consider the following questions:

- Tilting or fixed?
- Material required - steel, stainless or plastic?
- Load carrying capacity - light, medium or heavy duty?  
(Review the quoted load capacities in the individual product tables).
- Bolt down feature required?
- Threaded or plastic insert required for mounting?
- Optional extras: hygiene seal, rubber pad, (subject to minimum quantity and selected model).

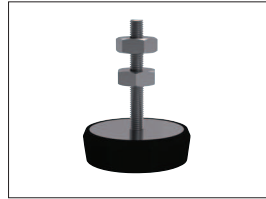
### Product selection



Fixed feet



Articulating levelling feet

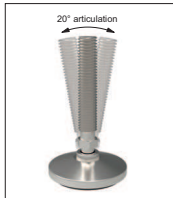


Machine mounts



Fulcrum screw

### Key Types



Articulation



Standard nylon base



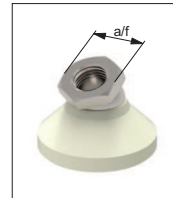
Anti-slip base



Bolt down base



Hygienic seal



Hex for easy installation

### Available features



Steel thread - Nylon base



Stainless thread - Nylon base



Steel thread - Steel base



Stainless thread - Stainless base

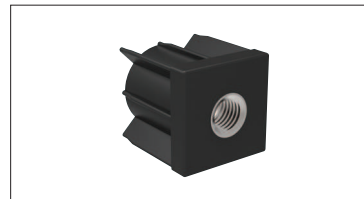
### Materials



Weldable insert



Hollow section insert



Hollow section bushed insert

### Mounting inserts



For applications under greater loads and requiring increased precision of adjustment see our range of Precision Height Adjusters.



For applications exposed to extreme vibrations see our range of Anti-Vibration Mounts.

### Additional technical information