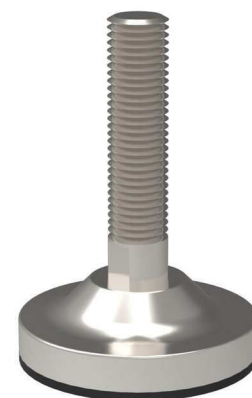
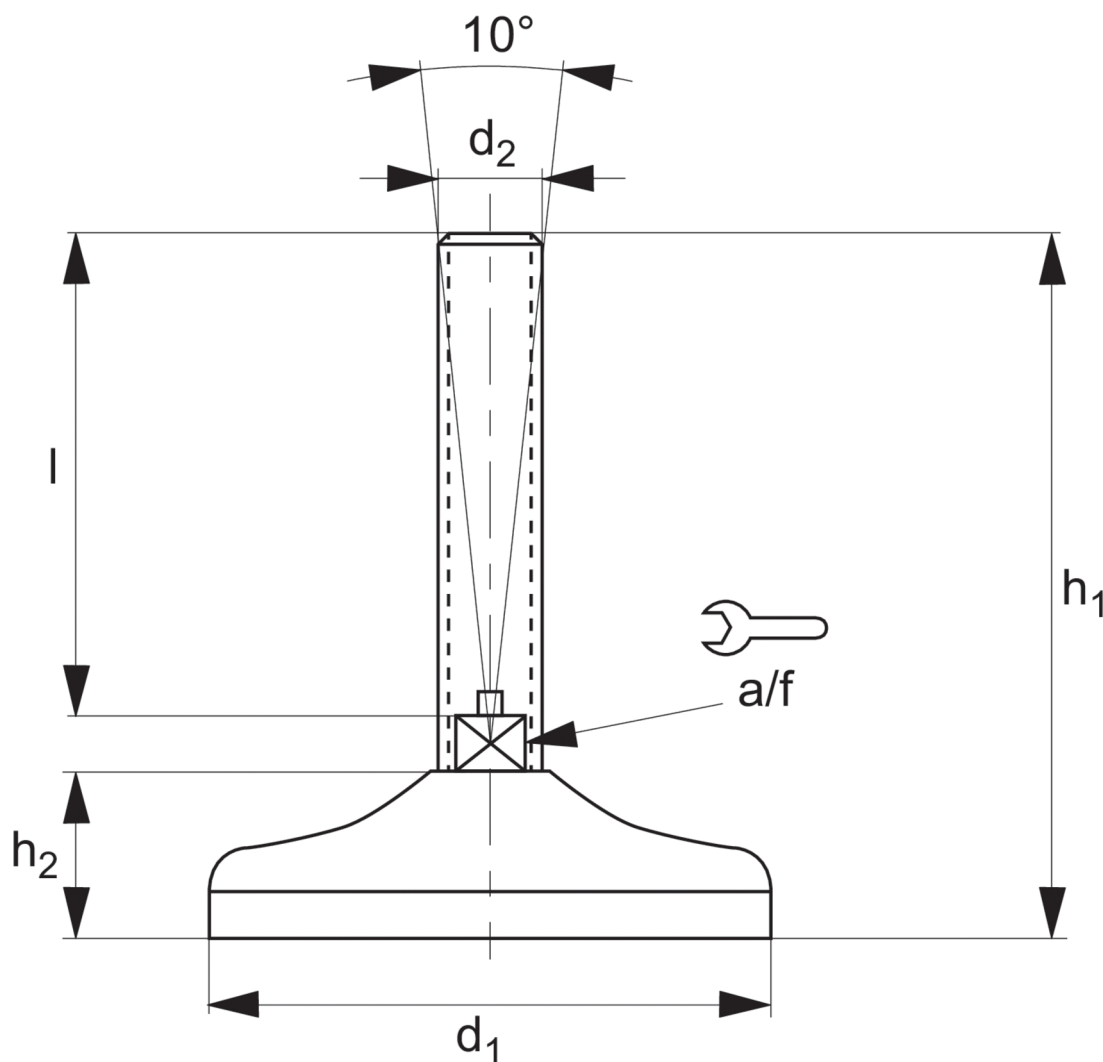


Full Steel Leveling Feet

fixed



34703



Material

Galvanized steel (C40), with rubber pad (70 shore A).

Technical Notes

Load values refer to static loads, located at half the screw height.

Order No.	d ₁	d ₂	l	h ₁	h ₂	a/f	Max. load Kgf
34703.W1000	50	M10	50	79	19	14	400
34703.W1001	50	M10	100	129	19	14	400
34703.W1002	80	M10	50	85	25	14	1000
34703.W1003	80	M10	100	135	25	14	1000
34703.W1200	50	M12	50	79	19	14	400
34703.W1201	50	M12	100	129	19	14	400
34703.W1202	50	M12	150	179	19	14	400
34703.W1203	80	M12	50	85	25	14	1000
34703.W1204	80	M12	100	135	25	14	1000
34703.W1205	80	M12	150	185	25	14	1000
34703.W1400	50	M14	50	79	19	14	400
34703.W1401	50	M14	100	129	19	14	400
34703.W1402	50	M14	150	179	19	14	400
34703.W1403	80	M14	50	85	25	14	1000
34703.W1404	80	M14	100	135	25	14	1000
34703.W1405	80	M14	150	185	25	14	1000
34703.W1600	50	M16	75	104	19	14	400
34703.W1601	50	M16	100	129	19	14	400
34703.W1602	50	M16	150	179	19	14	400
34703.W1603	80	M16	75	85	25	14	1000
34703.W1604	80	M16	100	135	25	14	1000
34703.W1605	80	M16	150	185	25	14	1000
34703.W1606	100	M16	75	112,5	28	16	1500
34703.W1607	100	M16	100	137,5	28	16	1500
34703.W1608	100	M16	150	187,5	28	16	1500
34703.W1609	100	M16	200	237,5	28	16	1500
34703.W1610	120	M16	75	116,5	32	16	3000
34703.W1611	120	M16	100	141,5	32	16	3000
34703.W1612	120	M16	150	191,5	32	16	3000
34703.W1613	120	M16	200	241,5	32	16	3000
34703.W2000	80	M20	75	111	25	14	1000

Full Steel Levelling Feet

fixed



34703

Order No.	d ₁	d ₂	l	h ₁	h ₂	a/f	Max. load Kgf
34703.W2001	80	M20	100	136	25	14	1000
34703.W2002	80	M20	150	186	25	14	1000
34703.W2003	80	M20	200	236	25	14	1000
34703.W2004	100	M20	75	113,5	28	20	1500
34703.W2005	100	M20	100	138,5	28	20	1500
34703.W2006	100	M20	150	188,5	28	20	1500
34703.W2007	100	M20	200	238,5	28	20	1500
34703.W2008	100	M20	250	288,5	28	20	1500
34703.W2009	120	M20	75	117,5	32	20	3000
34703.W2010	120	M20	100	142,5	32	20	3000
34703.W2011	120	M20	150	192,5	32	20	3000
34703.W2012	120	M20	200	242,5	32	20	3000
34703.W2013	120	M20	250	292,5	32	20	3000
34703.W2400	80	M24	75	111	25	14	1000
34703.W2401	80	M24	100	136	25	14	1000
34703.W2402	80	M24	150	186	25	14	1000
34703.W2403	80	M24	200	236	25	14	1000
34703.W2404	100	M24	100	138,5	28	24	1500
34703.W2405	100	M24	150	188,5	28	24	1500
34703.W2406	100	M24	200	238,5	28	24	1500
34703.W2407	100	M24	250	288,5	28	24	1500
34703.W2408	120	M24	100	142,5	32	24	3000
34703.W2409	120	M24	150	192,5	32	24	3000
34703.W2410	120	M24	200	242,5	32	24	3000
34703.W2411	120	M24	250	292,5	32	24	3000
34703.W3000	100	M30	100	139,5	28	30	1500
34703.W3001	100	M30	150	189,5	28	30	1500
34703.W3002	100	M30	200	239,5	28	30	1500
34703.W3003	100	M30	250	289,5	28	30	1500
34703.W3004	120	M30	100	143,5	32	30	3000
34703.W3005	120	M30	150	193,5	32	30	3000
34703.W3006	120	M30	200	243,5	32	30	3000
34703.W3007	120	M30	250	293,5	32	30	3000



Material

Galvanized steel (C40), with rubber pad (70 shore A).

Technical Notes

Load values refer to static loads, located at half the screw height.

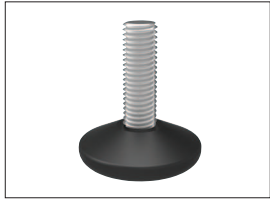


A Range of features to suit your application

To ensure you select the most suitable levelling feet for your application consider the following questions:

- Tilting or fixed?
- Material required - steel, stainless or plastic?
- Load carrying capacity - light, medium or heavy duty?
(Review the quoted load capacities in the individual product tables).
- Bolt down feature required?
- Threaded or plastic insert required for mounting?
- Optional extras: hygiene seal, rubber pad, (subject to minimum quantity and selected model).

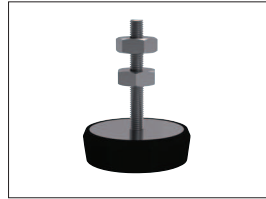
Product selection



Fixed feet



Articulating levelling feet

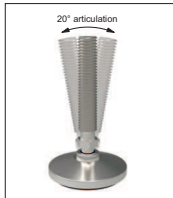


Machine mounts



Fulcrum screw

Key Types



Articulation



Standard nylon base



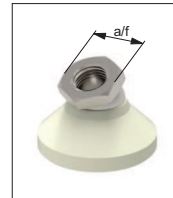
Anti-slip base



Bolt down base



Hygienic seal



Hex for easy installation

Available features



Steel thread - Nylon base



Stainless thread - Nylon base



Steel thread - Steel base

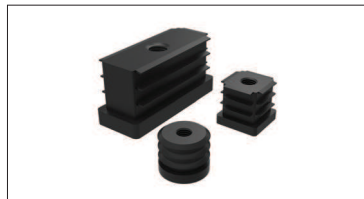


Stainless thread - Stainless base

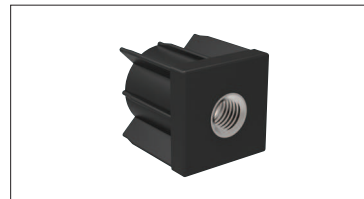
Materials



Weldable insert



Hollow section insert



Hollow section bushed insert

Mounting inserts



For applications under greater loads and requiring increased precision of adjustment see our range of Precision Height Adjusters.



For applications exposed to extreme vibrations see our range of Anti-Vibration Mounts.

Additional technical information