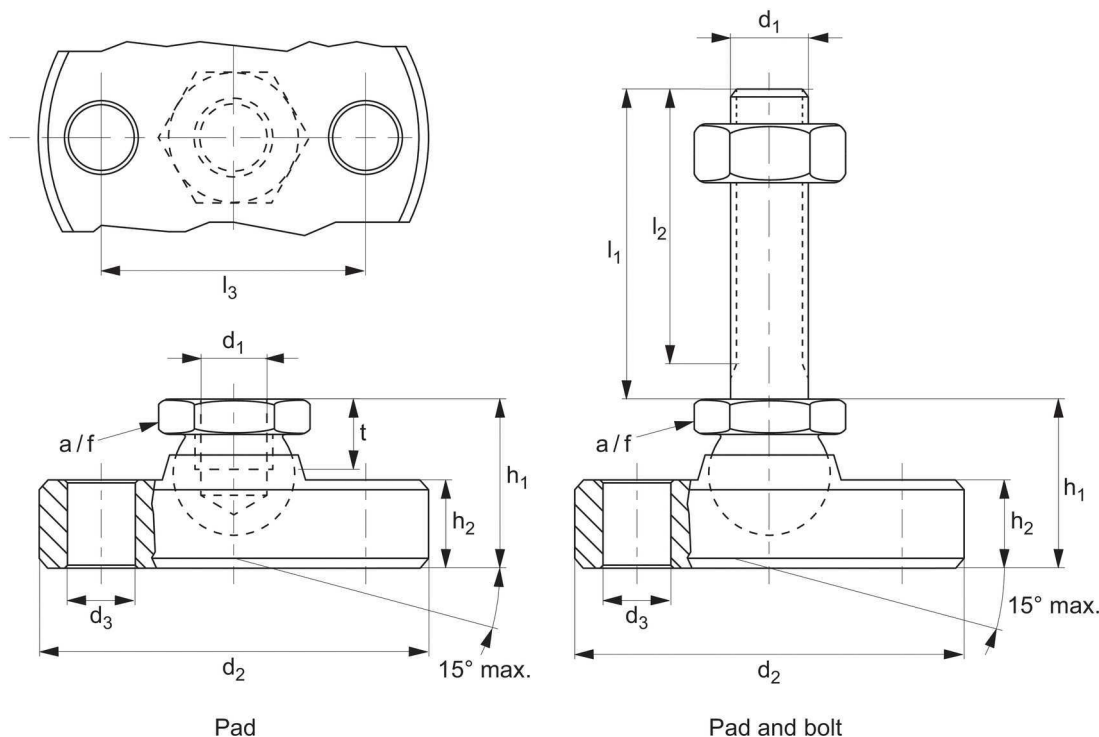


Levelling Feet - Bolt Down, Heavy Duty

pad and bolt **stainless steel**



34713



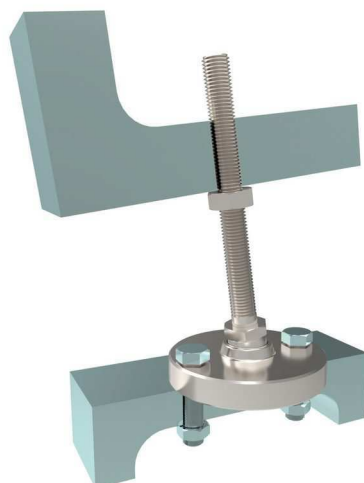
| Order No. | Finish | d ₁ | l ₁ | d ₂ -0,5 | d ₃ | l ₂ | l ₃ | h ₁ ≈ | h ₂ | t | a/f | Max. static load kN | g |
|-------------|--------------|----------------|----------------|------------------------|----------------|----------------|----------------|---------------------|----------------|------|-----|------------------------|------|
| 34713.W0706 | Pad | M 6 | - | 45 | 6,6 | - | 32 | 14 | 6,5 | 5,0 | 10 | 8 | 79 |
| 34713.W0708 | Pad | M 8 | - | 50 | 6,6 | - | 38 | 18 | 8,5 | 7,0 | 13 | 14 | 130 |
| 34713.W0710 | Pad | M10 | - | 60 | 9,0 | - | 44 | 22 | 11,5 | 9,0 | 17 | 16 | 250 |
| 34713.W0712 | Pad | M12 | - | 65 | 9,0 | - | 48 | 26 | 12,5 | 11,0 | 19 | 28 | 326 |
| 34713.W0716 | Pad | M16 | - | 70 | 9,0 | - | 54 | 32 | 13,5 | 13,5 | 24 | 36 | 427 |
| 34713.W0720 | Pad | M20 | - | 80 | 9,0 | - | 64 | 42 | 16,5 | 17,0 | 30 | 44 | 718 |
| 34713.W0724 | Pad | M24 | - | 100 | 11,0 | - | 78 | 45 | 20,5 | 19,0 | 36 | 52 | 1304 |
| 34713.W0810 | Pad and Bolt | M 6 | 60 | 45 | 6,6 | 57,0 | 32 | 14 | 6,5 | - | 10 | 8 | 93 |
| 34713.W0822 | Pad and Bolt | M 8 | 80 | 50 | 6,6 | 76,0 | 38 | 18 | 8,5 | - | 13 | 14 | 163 |
| 34713.W0838 | Pad and Bolt | M10 | 100 | 60 | 9,0 | 95,5 | 44 | 22 | 11,5 | - | 17 | 16 | 318 |
| 34713.W0842 | Pad and Bolt | M10 | 150 | 60 | 9,0 | 145,5 | 44 | 22 | 11,5 | - | 17 | 16 | 341 |
| 34713.W0852 | Pad and Bolt | M12 | 100 | 65 | 9,0 | 94,5 | 48 | 26 | 12,5 | - | 19 | 28 | 423 |
| 34713.W0856 | Pad and Bolt | M12 | 150 | 65 | 9,0 | 144,5 | 48 | 26 | 12,5 | - | 19 | 28 | 459 |
| 34713.W0868 | Pad and Bolt | M16 | 100 | 70 | 9,0 | 94,0 | 54 | 32 | 13,5 | - | 24 | 36 | 615 |
| 34713.W0872 | Pad and Bolt | M16 | 200 | 70 | 9,0 | 194,0 | 54 | 32 | 13,5 | - | 24 | 36 | 746 |
| 34713.W0882 | Pad and Bolt | M20 | 100 | 80 | 9,0 | 92,5 | 64 | 42 | 16,5 | - | 30 | 44 | 1029 |
| 34713.W0888 | Pad and Bolt | M20 | 200 | 80 | 9,0 | 192,5 | 64 | 42 | 16,5 | - | 30 | 44 | 1231 |
| 34713.W0895 | Pad and Bolt | M24 | 100 | 100 | 11,0 | 91,0 | 78 | 45 | 20,5 | - | 36 | 52 | 1775 |
| 34713.W0898 | Pad and Bolt | M24 | 200 | 100 | 11,0 | 191,0 | 78 | 45 | 20,5 | - | 36 | 52 | 2075 |

Material

Pad and bolt: stainless steel 1.4305, AISI 303.
Lock nut: Stainless steel A2, DIN 934 and ISO 4032.

Technical Notes

To be used as foot and thrust pad. Including two mounting holes in pad.



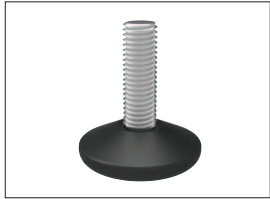


A Range of features to suit your application

To ensure you select the most suitable levelling feet for your application consider the following questions:

Product selection

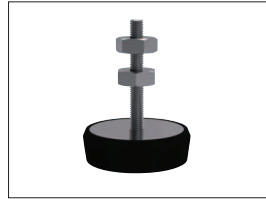
- Tilting or fixed?
- Material required - steel, stainless or plastic?
- Load carrying capacity - light, medium or heavy duty?
(Review the quoted load capacities in the individual product tables).
- Bolt down feature required?
- Threaded or plastic insert required for mounting?
- Optional extras: hygiene seal, rubber pad, (subject to minimum quantity and selected model).



Fixed feet



Articulating levelling feet

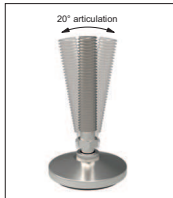


Machine mounts



Fulcrum screw

Key Types



Articulation



Standard nylon base



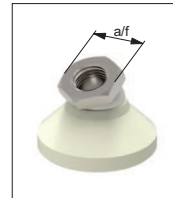
Anti-slip base



Bolt down base



Hygienic seal



Hex for easy installation

Available features



Steel thread - Nylon base



Stainless thread - Nylon base



Steel thread - Steel base

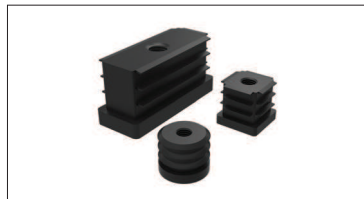


Stainless thread - Stainless base

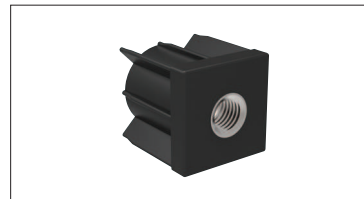
Materials



Weldable insert



Hollow section insert



Hollow section bushed insert

Mounting inserts



For applications under greater loads and requiring increased precision of adjustment see our range of Precision Height Adjusters.



For applications exposed to extreme vibrations see our range of Anti-Vibration Mounts.

Additional technical information