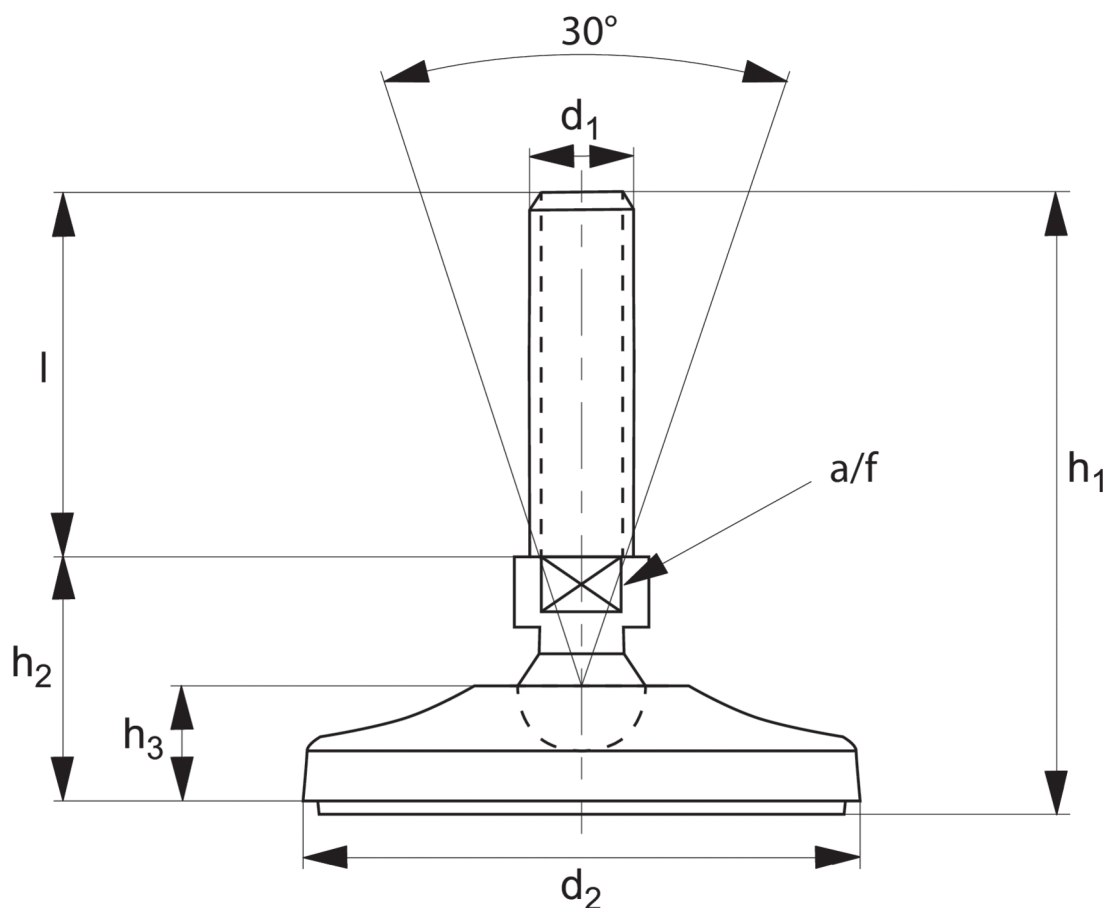


Levelling Feet

stainless steel swivel



34714



Material

Stainless steel (AISI 304), with rubber pad (70 Shore A).
Stainless steel (AISI 316) version available on request.

Technical Notes

Load values refer to static loads, located at half the screw height. When vibrations or dynamic loads are present these values should be reduced.



Order No.	d ₁	d ₂	l	h ₁	h ₂	h ₃	a/f	Max. load kN
34714.W1000	M10	50	25	56	28	16,0	14	15
34714.W1001	M10	50	50	81	28	16,0	14	15
34714.W1002	M10	50	75	106	28	16,0	14	15
34714.W1003	M10	50	100	131	28	16,0	14	15
34714.W1004	M10	50	125	156	28	16,0	14	15
34714.W1200	M12	50	25	56	28	16,0	14	15
34714.W1201	M12	50	50	81	28	16,0	14	15
34714.W1202	M12	50	75	106	28	16,0	14	15
34714.W1203	M12	50	100	131	28	16,0	14	15
34714.W1204	M12	50	125	156	28	16,0	14	15
34714.W1400	M14	65	50	83	30	17,0	14	20
34714.W1401	M14	65	75	108	30	17,0	14	20
34714.W1402	M14	65	100	133	30	17,0	14	20
34714.W1403	M14	65	125	158	30	17,0	14	20
34714.W1404	M14	65	150	183	30	17,0	14	20
34714.W1600	M16	100	50	96	43	20,0	20	35
34714.W1601	M16	100	75	121	43	20,0	20	35
34714.W1602	M16	100	100	146	43	20,0	20	35
34714.W1603	M16	100	125	171	43	20,0	20	35
34714.W1604	M16	100	150	196	43	20,0	20	35
34714.W1605	M16	100	175	221	43	20,0	20	35
34714.W1606	M16	100	200	246	43	20,0	20	35
34714.W2000	M20	100	75	121	43	20,0	20	45
34714.W2001	M20	100	100	146	43	20,0	20	45
34714.W2002	M20	100	125	171	43	20,0	20	45
34714.W2003	M20	100	150	196	43	20,0	20	45
34714.W2004	M20	100	175	221	43	20,0	20	45
34714.W2005	M20	100	200	246	43	20,0	20	45
34714.W2006	M20	100	225	271	43	20,0	20	45
34714.W2007	M20	100	250	296	43	20,0	20	45
34714.W2400	M24	100	75	122	44	20,0	20	55
34714.W2401	M24	100	100	147	44	20,0	20	55
34714.W2402	M24	100	125	172	44	20,0	20	55
34714.W2403	M24	100	150	202	44	20,0	20	55
34714.W2404	M24	100	175	222	44	20,0	20	55
34714.W2405	M24	100	200	247	44	20,0	20	55

Levelling Feet

stainless steel swivel



34714

Order No.	d ₁	d ₂	l	h ₁	h ₂	h ₃	a/f	Max. load kN
34714.W2406	M24	100	225	272	44	20,0	20	55
34714.W2407	M24	100	250	297	44	20,0	20	55
34714.W3000	M30	120	100	150	47	23,0	26	65
34714.W3001	M30	120	125	175	47	23,0	26	65
34714.W3002	M30	120	150	200	47	23,0	26	65
34714.W3003	M30	120	175	225	47	23,0	26	65
34714.W3004	M30	120	200	250	47	23,0	26	65
34714.W3005	M30	120	225	275	47	23,0	26	65
34714.W3006	M30	120	250	300	47	23,0	26	65



Material

Stainless steel (AISI 304), with rubber pad (70 Shore A).
Stainless steel (AISI 316) version available on request.

Technical Notes

Load values refer to static loads, located at half the screw height. When vibrations or dynamic loads are present these values should be reduced.



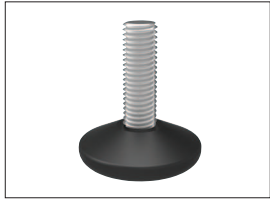


A Range of features to suit your application

To ensure you select the most suitable levelling feet for your application consider the following questions:

Product selection

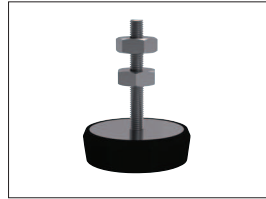
- Tilting or fixed?
- Material required - steel, stainless or plastic?
- Load carrying capacity - light, medium or heavy duty?
(Review the quoted load capacities in the individual product tables).
- Bolt down feature required?
- Threaded or plastic insert required for mounting?
- Optional extras: hygiene seal, rubber pad, (subject to minimum quantity and selected model).



Fixed feet



Articulating levelling feet

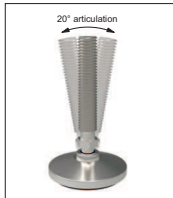


Machine mounts



Fulcrum screw

Key Types



Articulation



Standard nylon base



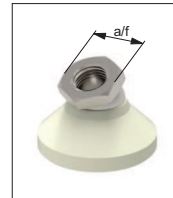
Anti-slip base



Bolt down base



Hygienic seal



Hex for easy installation

Available features



Steel thread - Nylon base



Stainless thread - Nylon base



Steel thread - Steel base

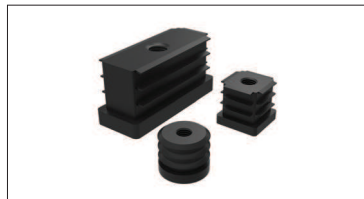


Stainless thread - Stainless base

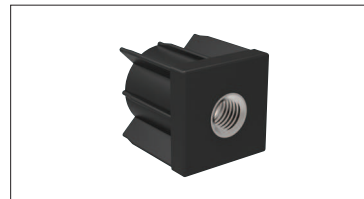
Materials



Weldable insert



Hollow section insert



Hollow section bushed insert

Mounting inserts



For applications under greater loads and requiring increased precision of adjustment see our range of Precision Height Adjusters.



For applications exposed to extreme vibrations see our range of Anti-Vibration Mounts.

Additional technical information