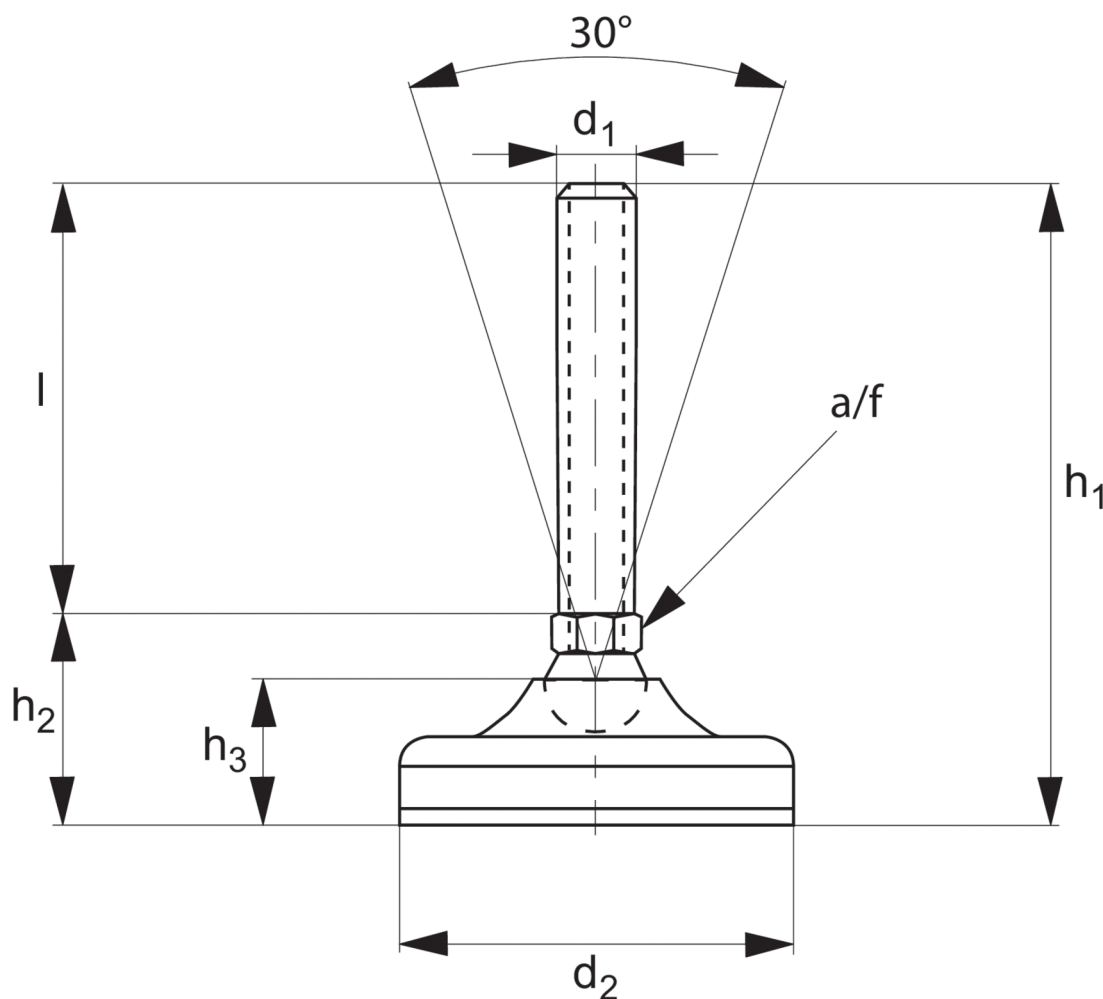


Levelling Feet

plastic pad, bolt steel



34723



Material

Pad: polyamide reinforced by fibre glass with anti-slip pad.

Bolt: galvanized steel (C40)

Technical Notes

Load values refer to static loads, located at half the screw height. When vibrations or dynamic loads are present these values should be reduced.



Order No.	d ₁	d ₂	l ₁	h ₁	h ₂	h ₃	a/f	Max. load kN
34723.W0801	M 8	40	25	55	30	19,5	12	10
34723.W0802	M 8	40	50	80	30	19,5	12	10
34723.W0803	M 8	40	75	105	30	19,5	12	10
34723.W0804	M 8	40	100	130	30	19,5	12	10
34723.W1000	M10	65	50	86	36	26,0	14	11
34723.W1001	M10	65	75	111	36	26,0	14	11
34723.W1002	M10	65	100	136	36	26,0	14	11
34723.W1003	M10	65	125	161	36	26,0	14	11
34723.W1200	M12	65	50	86	36	26,0	14	11
34723.W1201	M12	65	75	111	36	26,0	14	11
34723.W1202	M12	65	100	136	36	26,0	14	11
34723.W1203	M12	65	125	161	36	26,0	14	11
34723.W1400	M14	65	50	86	36	26,0	14	15
34723.W1401	M14	65	75	111	36	26,0	14	15
34723.W1402	M14	65	100	136	36	26,0	14	15
34723.W1403	M14	65	125	161	36	26,0	14	15
34723.W1404	M14	65	150	186	36	26,0	14	15
34723.W1405	M14	65	175	211	36	26,0	14	15
34723.W1600	M16	65	50	86	36	26,0	16	15
34723.W1601	M16	65	75	111	36	26,0	16	15
34723.W1602	M16	65	100	136	36	26,0	16	15
34723.W1603	M16	65	125	161	36	26,0	16	15
34723.W1604	M16	65	150	186	36	26,0	16@	15
34723.W1605	M16	65	175	211	36	26,0	16@	15
34723.W1606	M16	65	200	236	36	26,0	16@	15
34723.W2000	M20	65	75	115	40	26,0	17	15
34723.W2001	M20	65	100	140	40	26,0	17	15
34723.W2002	M20	65	125	165	40	26,0	17	15
34723.W2003	M20	65	150	190	40	26,0	17	15
34723.W2004	M20	65	175	215	40	26,0	17	15
34723.W2005	M20	65	200	240	40	26,0	17	15

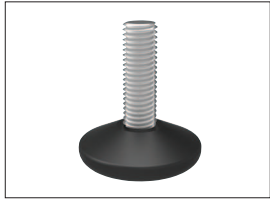


A Range of features to suit your application

To ensure you select the most suitable levelling feet for your application consider the following questions:

Product selection

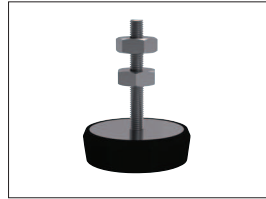
- Tilting or fixed?
- Material required - steel, stainless or plastic?
- Load carrying capacity - light, medium or heavy duty?
(Review the quoted load capacities in the individual product tables).
- Bolt down feature required?
- Threaded or plastic insert required for mounting?
- Optional extras: hygiene seal, rubber pad, (subject to minimum quantity and selected model).



Fixed feet



Articulating levelling feet

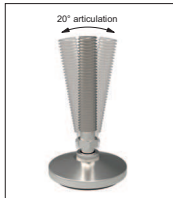


Machine mounts



Fulcrum screw

Key Types



Articulation



Standard nylon base



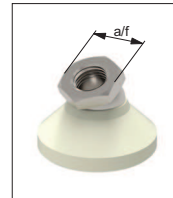
Anti-slip base



Bolt down base



Hygienic seal



Hex for easy installation

Available features



Steel thread - Nylon base



Stainless thread - Nylon base



Steel thread - Steel base

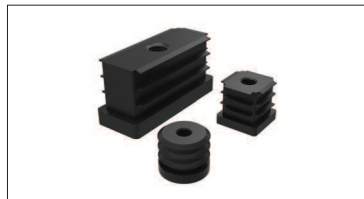


Stainless thread - Stainless base

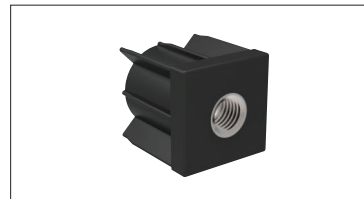
Materials



Weldable insert



Hollow section insert



Hollow section bushed insert

Mounting inserts



For applications under greater loads and requiring increased precision of adjustment see our range of Precision Height Adjusters.



For applications exposed to extreme vibrations see our range of Anti-Vibration Mounts.

Additional technical information