

Material

Pad: pressed stainless steel AISI 303.

Bolt: stainless steel AISI 303.

Pad insert: nitril rubber.

Technical Notes

Lock nuts available separately.
Please see part ref 65686.

Tips

For use in wide range of industries including food processing, medical equipment, electronics and machinery workshops.

Order No.	d_1	d_2	l	h_1	Max. static load kN
34751.W0100	M10	50	50	25	3,5
34751.W0101	M10	50	100	25	3,5
34751.W0120	M12	50	100	25	3,5
34751.W0121	M12	50	150	25	3,5
34751.W0160	M16	50	100	28	3,5
34751.W0161	M16	50	150	28	3,5
34751.W0162	M16	75	100	33	7,5
34751.W0163	M16	75	150	33	7,5
34751.W0164	M16	75	233	33	7,5
34751.W0165	M16	100	100	38	10
34751.W0166	M16	100	150	38	10
34751.W0167	M16	100	200	38	10
34751.W0200	M20	75	150	35	7,5
34751.W0201	M20	75	200	35	7,5
34751.W0202	M20	100	150	41	10,0
34751.W0203	M20	100	200	41	10,0
34751.W0240	M24	100	150	43	10,0
34751.W0241	M24	100	250	43	10,0



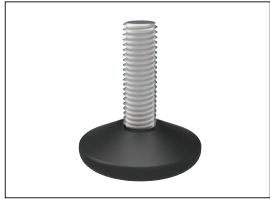


A Range of features to suit your application

To ensure you select the most suitable levelling feet for your application consider the following questions:

- Tilting or fixed?
- Material required - steel, stainless or plastic?
- Load carrying capacity - light, medium or heavy duty?
(Review the quoted load capacities in the individual product tables).
- Bolt down feature required?
- Threaded or plastic insert required for mounting?
- Optional extras: hygiene seal, rubber pad, (subject to minimum quantity and selected model).

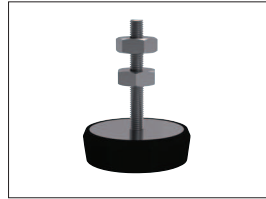
Product selection



Fixed feet



Articulating levelling feet

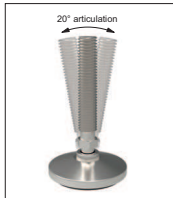


Machine mounts



Fulcrum screw

Key Types



Articulation



Standard nylon base



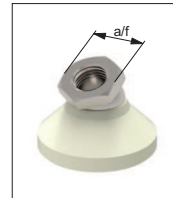
Anti-slip base



Bolt down base



Hygienic seal



Hex for easy installation

Available features



Steel thread - Nylon base



Stainless thread - Nylon base



Steel thread - Steel base



Stainless thread - Stainless base

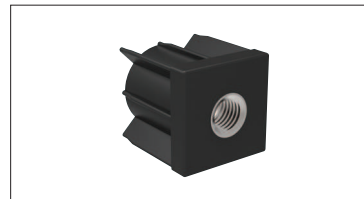
Materials



Weldable insert



Hollow section insert



Hollow section bushed insert

Mounting inserts



For applications under greater loads and requiring increased precision of adjustment see our range of Precision Height Adjusters.



For applications exposed to extreme vibrations see our range of Anti-Vibration Mounts.

Additional technical information