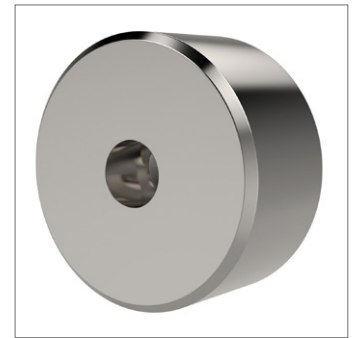
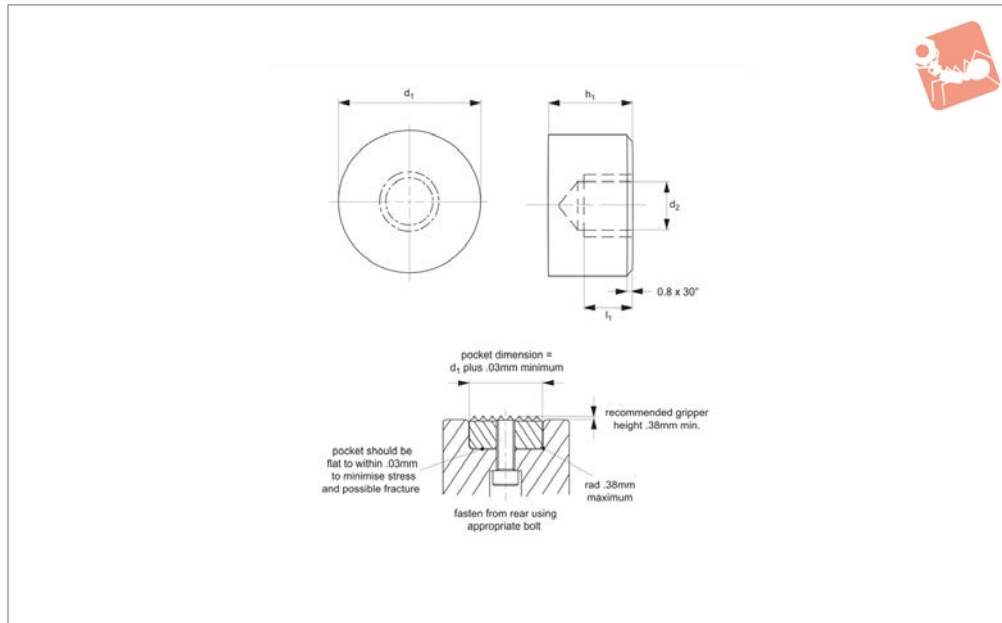


Rest Pads - Stainless Steel

round - rear fixing

Grippers & Rest Pads



35982

GRIPPERS & REST PADS

Material

Stainless steel (AISI 630), hardened to HRC 43-46.

Technical Notes

Can be used as rest pads, stops, supports

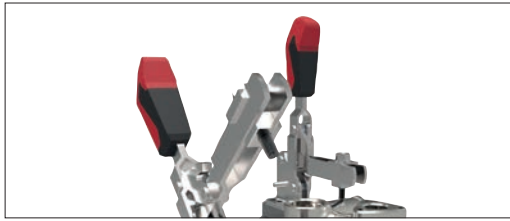
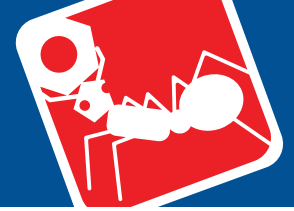
etc in jigs and fixtures.

Tips

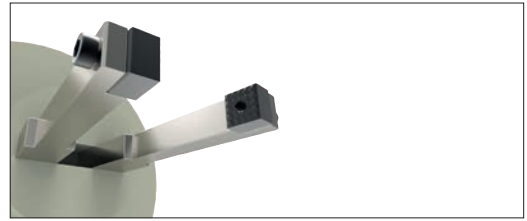
Can be fastened from rear using appropriate bolt, or alternatively via use of a differential screw. Note installation recom-

mendations in technical diagram.

Order No.	d_1 $+0.00/-0.13$	d_2	h_1 ± 0.03	l_1
35982.W0080	8	M 4x0,7	10	5.0
35982.W0082	8	M 4x0,7	12	6.4
35982.W0100	10	M 5x0,8	10	5.0
35982.W0102	10	M 5x0,8	12	6.4
35982.W0120	12	M 5x0,8	10	5.0
35982.W0122	12	M 5x0,8	12	6.4
35982.W0160	16	M 6x1,0	10	5.0
35982.W0162	16	M 6x1,0	12	6.4
35982.W0200	20	M 6x1,0	10	5.0
35982.W0202	20	M 6x1,0	12	6.4
35982.W0250	25	M 6x1,0	10	5.0
35982.W0252	25	M 6x1,0	12	6.4



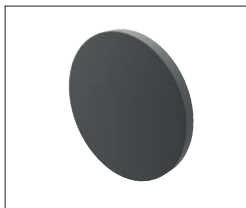
Grippers enhance workholding for multiple machining operations.



Grippers increase handling capability.

Pads and Gripper Options

Pads



Solid Carbide

High impact carbide pads, can be brazed or bonded into place.



Carbide Tipped

Constructed with high impact carbide pad brazed to a heat treated alloy steel body. Mount via tapped hole or a flat on the outside diameter for set screw mounting.



Hardened Steel

Made from 8620 steel, carburized and hardened to Rc 58/60 1.2mm with black oxide finish. Mount via tapped or counter bored hole.



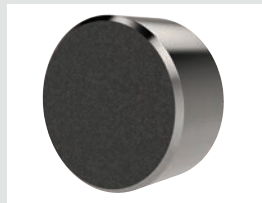
Non-marking Thermoplast

Made from white thermoplast. Mount via tapped or counter bored hole.



Stainless Steel

Pad from 17-4 stainless steel, hardened to Rc 43/46. Mount via tapped or counter bored hole.



Abrasive Diamond Surface

Abrasive surface permanently fused to a 17-4 stainless steel pad, hardened to Rc 43/46. The surface texture is comparable to a 100 grit abrasive. Mount via tapped or counter bored hole.



Soft Urethane Surface

Urethane surface is permanently bonded to a 300 series stainless steel pad. The urethane provides excellent protection against damage on delicate work surfaces. Tapped hole mounting.

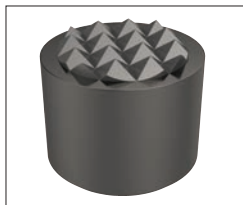
see our website for our full range:
wixroyd.com

Grippers



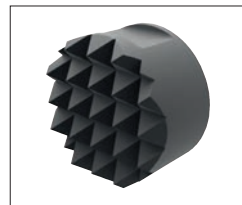
High Speed Tool Steel

Manufactured from M-2 high speed tool steel, hardened to Rc 60/62 with black oxide finish. Mount via tapped hole, counter bored hole or a flat on the outside diameter for set screw mounting.



Carbide Tipped

Constructed with high impact carbide pad brazed to a heat treated alloy steel body. Mounts via tapped hole or a flat on the outside diameter for set screw mounting.



Solid Carbide

Manufactured from high impact carbide in a solid gripper pad or as a solid gripper body with a threaded brazed-in steel insert. Mount via tapped hole or a flat on the outside diameter for set screw mounting.