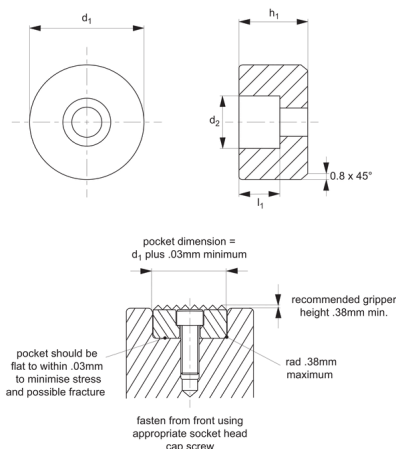




Rest Pads - Steel and Thermoplastic

round - front fixing

Grippers & Rest Pads



35984

GRIPPERS & REST PADS

Material

Steel (AISI 8620), hardened to HRc 58-60.
Black oxide finish.
Thermoplastic, white.

etc in jigs and fixtures.

h_1 = tol. of steel $\pm 0,03$, tol. of thermoplastic $+0,00 -0,13$.

recommendations in technical diagram.

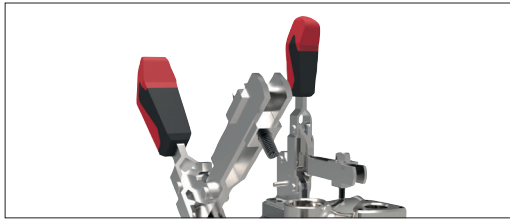
Technical Notes

Can be used as rest pads, stops, supports

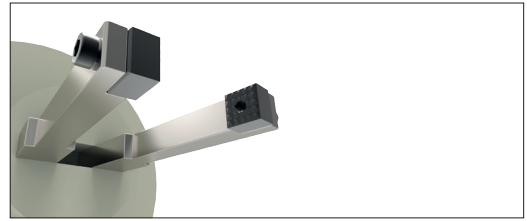
Tips

Fasten from front using appropriate socket head cap screw. Note installation recom-

Order No.	Material	d_1 $+0.00 -0.13$	d_2 to fit DIN 912	h_1	l_1
35984.W0100	Steel	10	M 3	10	5.0
35984.W0102	Steel	10	M 3	12	5.0
35984.W0120	Steel	12	M 4	10	5.6
35984.W0122	Steel	12	M 4	12	5.6
35984.W0160	Steel	16	M 5	10	6.6
35984.W0162	Steel	16	M 5	12	6.6
35984.W0200	Steel	20	M 6	10	7.6
35984.W0202	Steel	20	M 6	12	7.6
35984.W0250	Steel	25	M 6	10	7.6
35984.W0252	Steel	25	M 6	12	7.6
35984.W1100	Plastic	10	M 3	10	5.0
35984.W1102	Plastic	10	M 3	12	5.0
35984.W1120	Plastic	12	M 4	10	5.6
35984.W1122	Plastic	12	M 4	12	5.6
35984.W1160	Plastic	16	M 5	10	6.6
35984.W1162	Plastic	16	M 5	12	6.6
35984.W1200	Plastic	20	M 6	10	7.6
35984.W1202	Plastic	20	M 6	12	7.6
35984.W1250	Plastic	25	M 6	10	7.6
35984.W1252	Plastic	25	M 6	12	7.6



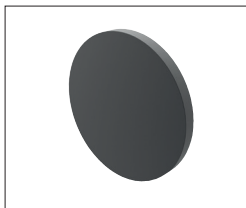
Grippers enhance workholding for multiple machining operations.



Grippers increase handling capability.

Pads and Gripper Options

Pads



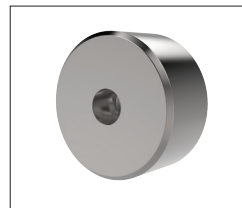
Solid Carbide

High impact carbide pads, can be brazed or bonded into place.



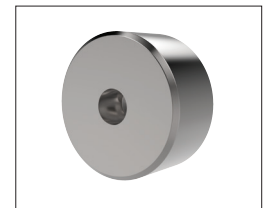
Carbide Tipped

Constructed with high impact carbide pad brazed to a heat treated alloy steel body. Mount via tapped hole or a flat on the outside diameter for set screw mounting.



Hardened Steel

Made from 8620 steel, carburized and hardened to Rc 58/60 1.2mm with black oxide finish. Mount via tapped or counter bored hole.



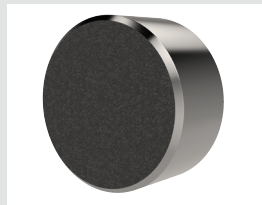
Non-marking Thermoplast

Made from white thermoplast. Mount via tapped or counter bored hole.



Stainless Steel

Pad from 17-4 stainless steel, hardened to Rc 43/46. Mount via tapped or counter bored hole.



Abrasive Diamond Surface

Abrasive surface permanently fused to a 17-4 stainless steel pad, hardened to Rc 43/46. The surface texture is comparable to a 100 grit abrasive. Mount via tapped or counter bored hole.



Soft Urethane Surface

Urethane surface is permanently bonded to a 300 series stainless steel pad. The urethane provides excellent protection against damage on delicate work surfaces. Tapped hole mounting.

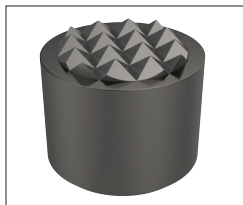
see our website for our full range:
wixroyd.com

Grippers



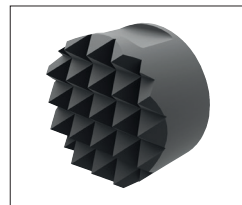
High Speed Tool Steel

Manufactured from M-2 high speed tool steel, hardened to Rc 60/62 with black oxide finish. Mount via tapped hole, counter bored hole or a flat on the outside diameter for set screw mounting.



Carbide Tipped

Constructed with high impact carbide pad brazed to a heat treated alloy steel body. Mounts via tapped hole or a flat on the outside diameter for set screw mounting.



Solid Carbide

Manufactured from high impact carbide in a solid gripper pad or as a solid gripper body with a threaded brazed-in steel insert. Mount via tapped hole or a flat on the outside diameter for set screw mounting.