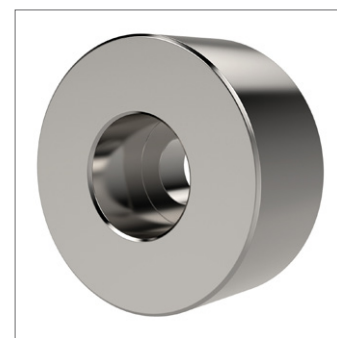
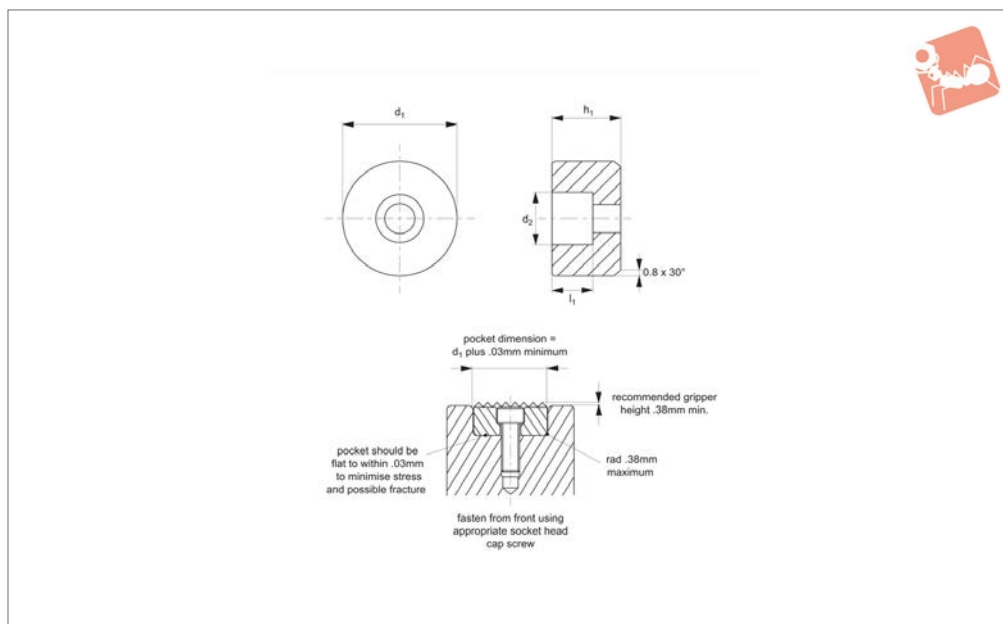




# Rest Pads - Stainless Steel

round - front fixing

## Grippers & Rest Pads



**35986**

GRIPPERS & REST PADS

### Material

Stainless steel (AISI 630), hardened to RHc 43-46.

well as protection against chemical and environmental corrosion.

recommendations in technical diagram.

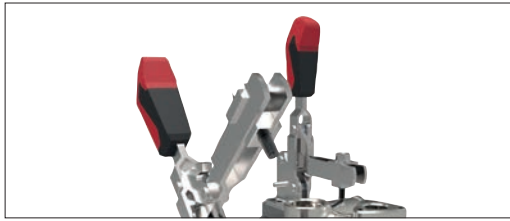
### Technical Notes

Stainless steel provides high strength as

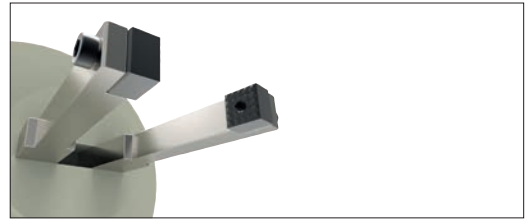
### Tips

Counterbored hole for front mounting with a socket head cap screw. Note installation

Order No.	$d_1$ +0.00 -0.13	$d_2$ to fit DIN 912	$h_1$ $\pm 0.03$	$l_1$
35986.W0100	10	M 3	10	5.0
35986.W0102	10	M 3	12	5.0
35986.W0120	12	M 4	10	5.6
35986.W0122	12	M 4	12	5.6
35986.W0160	16	M 5	10	6.6
35986.W0162	16	M 5	12	6.6
35986.W0200	20	M 6	10	7.6
35986.W0202	20	M 6	12	7.6
35986.W0250	25	M 6	10	7.6
35986.W0252	25	M 6	12	7.6



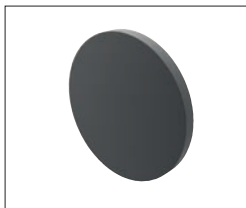
Grippers enhance workholding for multiple machining operations.



Grippers increase handling capability.

## Pads and Gripper Options

### Pads



#### Solid Carbide

High impact carbide pads, can be brazed or bonded into place.



#### Carbide Tipped

Constructed with high impact carbide pad brazed to a heat treated alloy steel body. Mount via tapped hole or a flat on the outside diameter for set screw mounting.



#### Hardened Steel

Made from 8620 steel, carburized and hardened to Rc 58/60 1.2mm with black oxide finish. Mount via tapped or counter bored hole.



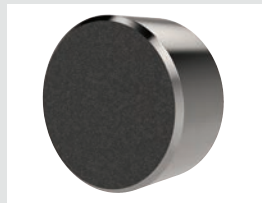
#### Non-marking Thermoplast

Made from white thermoplast. Mount via tapped or counter bored hole.



#### Stainless Steel

Pad from 17-4 stainless steel, hardened to Rc 43/46. Mount via tapped or counter bored hole.



#### Abrasive Diamond Surface

Abrasive surface permanently fused to a 17-4 stainless steel pad, hardened to Rc 43/46. The surface texture is comparable to a 100 grit abrasive. Mount via tapped or counter bored hole.



#### Soft Urethane Surface

Urethane surface is permanently bonded to a 300 series stainless steel pad. The urethane provides excellent protection against damage on delicate work surfaces. Tapped hole mounting.

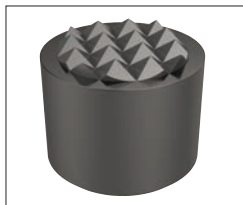
see our website for our full range:  
**wixroyd.com**

### Grippers



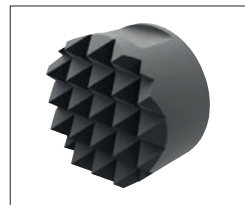
#### High Speed Tool Steel

Manufactured from M-2 high speed tool steel, hardened to Rc 60/62 with black oxide finish. Mount via tapped hole, counter bored hole or a flat on the outside diameter for set screw mounting.



#### Carbide Tipped

Constructed with high impact carbide pad brazed to a heat treated alloy steel body. Mounts via tapped hole or a flat on the outside diameter for set screw mounting.



#### Solid Carbide

Manufactured from high impact carbide in a solid gripper pad or as a solid gripper body with a threaded brazed-in steel insert. Mount via tapped hole or a flat on the outside diameter for set screw mounting.