



# Shoulder Screws - Cap Head

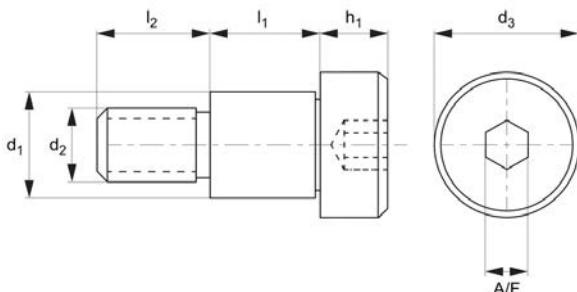
hex drive - 303 stainless

# Shoulder Screws



MADE IN BRITAIN

## 36642.A2



### Material

Stainless steel (AISI 303, 1.4305). Tensile strength 550 N/mm<sup>2</sup>. Proof stress min. 190 N/mm<sup>2</sup>, austenitic stainless steel.

### Technical Notes

303 series stainless steel provides good resistance to corrosion. It is mildly magnetic.

For torx drive versions please see P0145. Special lengths and diameters produced to drawings.

Order No.	d <sub>1</sub> +0 -0.025	l <sub>1</sub> +0.05 -0.0	d <sub>2</sub>	d <sub>3</sub>	l <sub>2</sub>	h <sub>1</sub>	A/F
36642.W0404-A2	4	4	M 3	6	4	3	2
36642.W0405-A2	4	5	M 3	6	4	3	2
36642.W0406-A2	4	6	M 3	6	4	3	2
36642.W0408-A2	4	8	M 3	6	4	3	2
36642.W0410-A2	4	10	M 3	6	4	3	2
36642.W0504-A2	5	4	M 4	8	5	4	2.5
36642.W0505-A2	5	5	M 4	8	5	4	2.5
36642.W0506-A2	5	6	M 4	8	5	4	2.5
36642.W0508-A2	5	8	M 4	8	5	4	2.5
36642.W0510-A2	5	10	M 4	8	5	4	2.5
36642.W0512-A2	5	12	M 4	8	5	4	2.5
36642.W0514-A2	5	14	M 4	8	5	4	2.5
36642.W0516-A2	5	16	M 4	8	5	4	2.5
36642.W0520-A2	5	20	M 4	8	5	4	2.5
36642.W0525-A2	5	25	M 4	8	5	4	2.5
36642.W0530-A2	5	30	M 4	8	5	4	2.5
36642.W0604-A2	6	4	M 5	10	6	5	3
36642.W0605-A2	6	5	M 5	10	6	5	3
36642.W0606-A2	6	6	M 5	10	6	5	3
36642.W0608-A2	6	8	M 5	10	6	5	3
36642.W0610-A2	6	10	M 5	10	6	5	3
36642.W0612-A2	6	12	M 5	10	6	5	3
36642.W0614-A2	6	14	M 5	10	6	5	3
36642.W0616-A2	6	16	M 5	10	6	5	3
36642.W0620-A2	6	20	M 5	10	6	5	3
36642.W0625-A2	6	25	M 5	10	6	5	3
36642.W0630-A2	6	30	M 5	10	6	5	3
36642.W0640-A2	6	40	M 5	10	6	5	3
36642.W0650-A2	6	50	M 5	10	6	5	3
36642.W0660-A2	6	60	M 5	10	6	5	3
36642.W0806-A2	8	6	M 6	12	11	6	4
36642.W0808-A2	8	8	M 6	12	11	6	4
36642.W0810-A2	8	10	M 6	12	11	6	4
36642.W0812-A2	8	12	M 6	12	11	6	4



SHOULDER SCREWS

Order No.	$d_1$ +0 -0.025	$l_1$ +0.05 -0.0	$d_2$	$d_3$	$l_2$	$h_1$	A/F
36642.W0814-A2	8	14	M 6	12	11	6	4
36642.W0816-A2	8	16	M 6	12	11	6	4
36642.W0820-A2	8	20	M 6	12	11	6	4
36642.W0825-A2	8	25	M 6	12	11	6	4
36642.W0830-A2	8	30	M 6	12	11	6	4
36642.W0840-A2	8	40	M 6	12	11	6	4
36642.W0850-A2	8	50	M 6	12	11	6	4
36642.W0860-A2	8	60	M 6	12	11	6	4
36642.W0870-A2	8	70	M 6	12	11	6	4
36642.W0880-A2	8	80	M 6	12	11	6	4
36642.W1010-A2	10	10	M 6	14	11	7	5
36642.W1108-A2	10	8	M 8	14	12	7	5
36642.W1110-A2	10	10	M 8	14	12	7	5
36642.W1112-A2	10	12	M 8	14	12	7	5
36642.W1116-A2	10	16	M 8	14	12	7	5
36642.W1120-A2	10	20	M 8	14	12	7	5
36642.W1125-A2	10	25	M 8	14	12	7	5
36642.W1130-A2	10	30	M 8	14	12	7	5
36642.W1140-A2	10	40	M 8	14	12	7	5
36642.W1150-A2	10	50	M 8	14	12	7	5
36642.W1160-A2	10	60	M 8	14	12	7	5
36642.W1170-A2	10	70	M 8	14	12	7	5
36642.W1180-A2	10	80	M 8	14	12	7	5
36642.W1190-A2	10	90	M 8	14	12	7	5
36642.W1199-A2	10	100	M 8	14	12	7	5
36642.W1212-A2	12	12	M10	20	16	8	6
36642.W1216-A2	12	16	M10	20	16	8	6
36642.W1220-A2	12	20	M10	20	16	8	6
36642.W1225-A2	12	25	M10	20	16	8	6
36642.W1230-A2	12	30	M10	20	16	8	6
36642.W1240-A2	12	40	M10	20	16	8	6
36642.W1250-A2	12	50	M10	20	16	8	6
36642.W1260-A2	12	60	M10	20	16	8	6
36642.W1290-A2	12	90	M10	20	16	8	6
36642.W1625-A2	16	25	M12	24	18	11	8
36642.W1630-A2	16	30	M12	24	18	11	8
36642.W1640-A2	16	40	M12	24	18	11	8
36642.W1650-A2	16	50	M12	24	18	11	8
36642.W1660-A2	16	60	M12	24	18	11	8
36642.W1670-A2	16	70	M12	24	18	11	8
36642.W1699-A2	16	100	M12	24	18	11	8
36642.W2030-A2	20	30	M16	30	22	14	10
36642.W2040-A2	20	40	M16	30	22	14	10
36642.W2050-A2	20	50	M16	30	22	14	10
36642.W2060-A2	20	60	M16	30	22	14	10