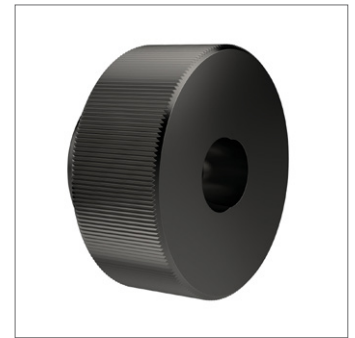
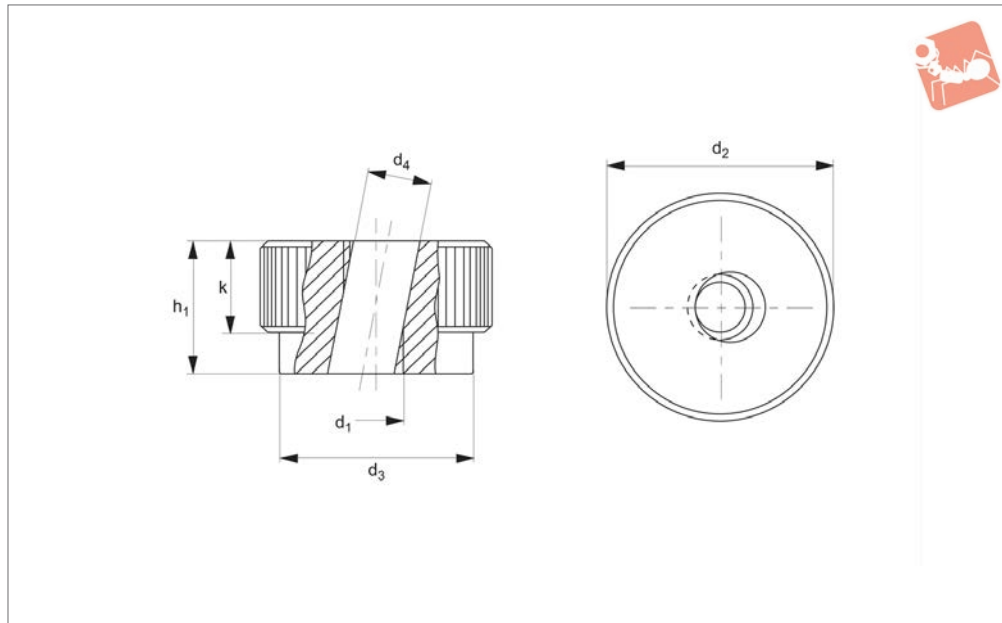




# Quick Tightening Knurled Knob

## Thumb Screws



**37360**

THUMB SCREWS

### Material

Turned and burnished steel, blackened.  
Tensile strength class 5.

### Technical Notes

These knurled knobs are used when quick

tightening is required and with only a slight clamping force. The knob is inserted obliquely on the threaded stud and then placed in the axial position so that it fits onto the stud threads. At this point it can

be locked with just a slight rotation.

Order No.	d <sub>1</sub>	d <sub>2</sub>	d <sub>3</sub>	d <sub>4</sub>	h <sub>1</sub>	k	Weight g
<b>37360.W0006</b>	M_6	24	16	6.7	14	10	35
<b>37360.W0008</b>	M_8	30	20	8.7	17	12	70
<b>37360.W0010</b>	M10	36	28	11.0	20	14	120
<b>37360.W0012</b>	M12	40	32	13	24	16	145