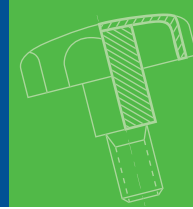


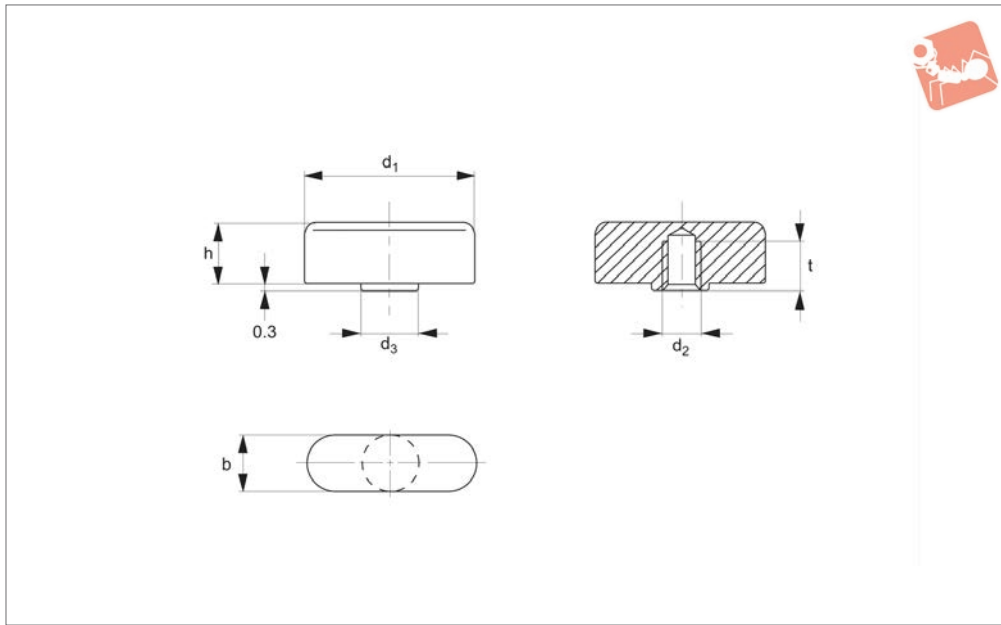


# Quarter Turn Screw, Female

stainless steel



## Grips



### 37400

GRIPS

#### Material

Stainless steel 1.4404 (AISI 316), sintered, matte, shot-blasted.

#### Technical Notes

These quarter turn screws are used to develop higher clamping torques than is possible with knurled handles.

possible with knurled handles.

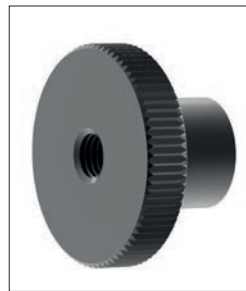
Order No.	d <sub>1</sub>	d <sub>2</sub>	d <sub>3</sub>	b	h	t min.	Weight g
37400.W0061	25	M 6	8	8	10.0	7	11
37400.W0062	30	M 6	10	10	12.0	9	18
37400.W0081	30	M 8	10	10	12.0	9	18
37400.W0082	36	M 8	12	12	14.5	10	36
37400.W0101	36	M10	12	12	14.5	10	36



**37020** - Steel flat knurled screw



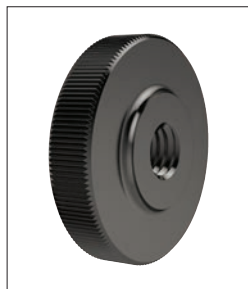
**37040** - Stainless steel flat knurled screw



**37100** - Steel knurled nut with collar



**37110** - Stainless steel knurled nut with collar



**37120** - Steel flat knurled nut



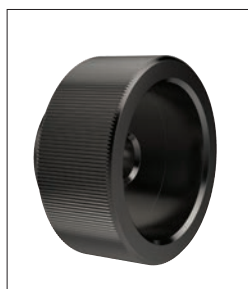
**37130** - Stainless steel flat knurled nut



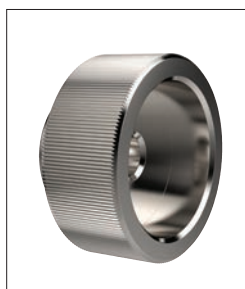
**37140** - Steel knurled screw with collar



**37150** - Stainless steel knurled screw with collar



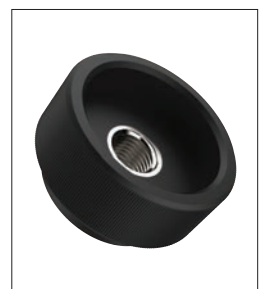
**37160** - Steel knurled nut



**37170** - Stainless steel knurled nut



**37200** - Stainless steel knurled thumb screw



**37330** - Plastic knurled nut



**37352** - Plastic knurled steel screw



**37354** - Plastic knurled stainless steel screw



**37380** - 1/4 turn screw



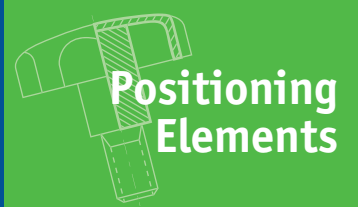
**37400** - 1/4 turn nut



**37460** - Thumb knob



# Wide Selection of Thumb Screws, Knurled Screws & Wing Nuts



**72180** - Plastic wing nut



**72190** - Plastic wing nut with screw



**72210** - Plastic wing nuts



**72270** - 1/4 turn nut



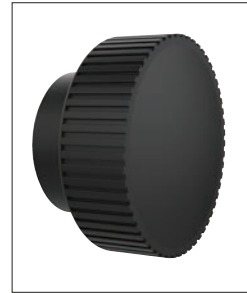
**72280** - 1/4 turn nut



**72290** - 1/4 turn screw



**72300** - 1/4 turn screw



**72410** - Knurled knob



**72430** - Knurled knob with screw



**72440** - Knurled knobs



**72460** - Knurled knobs



**73200** - Mushroom knobs

GRIPS