

### Material

Nitrile, urethane or neoprene bonded to a steel insert. Hardness from 20-80 durometer (Shore A).

### Technical Notes

Roller only - allows for custom mounting.

Order No. Nitrile	Order No. Urethane	Durometer	d <sub>1</sub>	l	d <sub>2</sub> min./max.
60620.W1002	60620.W2002	20	38,10 (1.5")	31,75	22,28/22,35
60620.W1003	60620.W2003	35	38,10 (1.5")	31,75	22,28/22,35
60620.W1006	60620.W2006	60	38,10 (1.5")	31,75	22,28/22,35
60620.W1008	60620.W2008	80	38,10 (1.5")	31,75	22,28/22,35
60620.W1012	-	20	50,80 (2")	23,37	31,80/31,90
60620.W1013	60620.W2013	35	50,80 (2")	23,37	31,80/31,90
60620.W1016	60620.W2016	60	50,80 (2")	23,37	31,80/31,90
60620.W1018	60620.W2018	80	50,80 (2")	23,37	31,80/31,90
60620.W1022	-	20	50,80 (2")	49,53	28,58/28,65
60620.W1023	60620.W2023	35	50,80 (2")	49,53	28,58/28,65
60620.W1026	60620.W2026	60	50,80 (2")	49,53	28,58/28,65
60620.W1028	60620.W2028	80	50,80 (2")	49,53	28,58/28,65
60620.W1032	-	20	50,80 (2")	49,53	31,80/31,90
60620.W1033	60620.W2033	35	50,80 (2")	49,53	31,80/31,90
60620.W1036	60620.W2036	60	50,80 (2")	49,53	31,80/31,90
60620.W1038	60620.W2038	80	50,80 (2")	49,53	31,80/31,90
60620.W1042	-	20	63,50 (2.5")	23,37	31,80/31,90
60620.W1043	60620.W2043	35	63,50 (2.5")	23,37	31,80/31,90
60620.W1046	60620.W2046	60	63,50 (2.5")	23,37	31,80/31,90
60620.W1048	60620.W2048	80	63,50 (2.5")	23,37	31,80/31,90
60620.W1052	60620.W3052	20	50,8 (2.5")	49,28	22,58/22,52
60620.W1053	60620.W3053	35	50,8 (2.5")	49,28	22,58/22,52
60620.W1056	60620.W2056	60	50,8 (2.5")	49,28	22,58/22,52
60620.W1059	60620.W2059	80	50,8 (2.5")	49,28	22,58/22,52
60620.W1062	60620.W2062	20	50,8 (2.5")	49,28	20,29/20,22
60620.W1063	60620.W2063	35	50,8 (2.5")	49,28	20,29/20,22
60620.W1066	60620.W2066	60	50,8 (2.5")	49,28	20,29/20,22
60620.W1069	60620.W2069	80	50,8 (2.5")	49,28	20,29/20,22
60620.W1072	60620.W2072	20	101,6 (4.0")	23,37	22,58/22,52
60620.W1073	60620.W2073	35	101,6 (4.0")	23,37	22,58/22,52
60620.W1076	60620.W2076	60	101,6 (4.0")	23,37	22,58/22,52
60620.W1079	60620.W2079	80	101,6 (4.0")	23,37	22,58/22,52
60620.W1082	60620.W2082	20	101,6 (4.0")	23,37	20,29/20,22
60620.W1083	60620.W2083	35	101,6 (4.0")	23,37	20,29/20,22
60620.W1086	60620.W2086	60	101,6 (4.0")	23,37	20,29/20,22
60620.W1089	60620.W2089	80	101,6 (4.0")	23,37	20,29/20,22
60620.W1092	60620.W2092	20	101,6 (4.0")	49,28	22,58/22,52
60620.W1093	60620.W2093	35	101,6 (4.0")	49,28	22,58/22,52
60620.W1096	60620.W2096	60	101,6 (4.0")	49,28	22,58/22,52
60620.W1099	60620.W2099	80	101,6 (4.0")	49,28	22,58/22,52
60620.W1102	60620.W2102	20	101,6 (4.0")	49,28	22,58/22,52
60620.W1103	60620.W2103	35	101,6 (4.0")	49,28	31,8/31,9
60620.W1106	60620.W2106	60	101,6 (4.0")	49,28	22,58/22,52
60620.W1109	60620.W2109	80	101,6 (4.0")	49,28	22,58/22,52
-	60620.W2113	35	101,6 (4.0")	49,28	22,58/22,52
-	60620.W2116	60	101,6 (4.0")	49,28	22,58/22,52

# Solid Roller

roller only



# 60620

Order No. Nitrile	Order No. Urethane	Durometer	d <sub>1</sub>	l	d <sub>2</sub> min./max.
-	60620.W2119	80	101,6 (4.0")	49,28	22,58/22.52
-	60620.W2123	35	101,6 (4.0")	49,28	22,58/22.52
-	60620.W2126	60	101,6 (4.0")	49,28	22,58/22.52
-	60620.W2129	80	101,6 (4.0")	49,28	22,58/22.52
-	60620.W2133	35	101,6 (4.0")	49,28	22,58/22.52
-	60620.W2106	60	101,6 (4.0")	49,28	22,58/22.52
-	60620.W2109	80	101,6 (4.0")	49,28	22,58/22.52
-	60620.W2113	35	152.4 (6.0")	49,28	20.29/20.22
-	60620.W2106	60	101,6 (4.0")	49,28	20.29/20.22
-	60620.W2109	80	152.4 (6.0")	49,28	20.29/20.22



#### Material

Nitrile, urethane or neoprene bonded to a steel insert. Hardness from 20-80 durometer (Shore A).

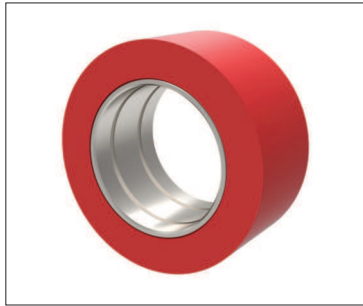
#### Technical Notes

Roller only - allows for custom mounting.

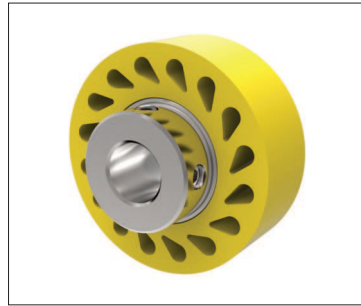


## Wixroyd Rollers

### Product overview



**Solid rollers** - have a smooth surface and a solid body

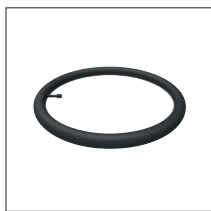


**Durasoft rollers** - have a smooth contact surface with teardrop holes to allow greater roller compression under load.



**Finned rollers** - are grooved and provide self-cleaning as dirt, debris and liquid pass under the contact surface of the roller.

### Durability levels



20 durometer:  
Stiff foam rubber



35 durometer:  
Pencil rubber top



60 durometer:  
Car tyre

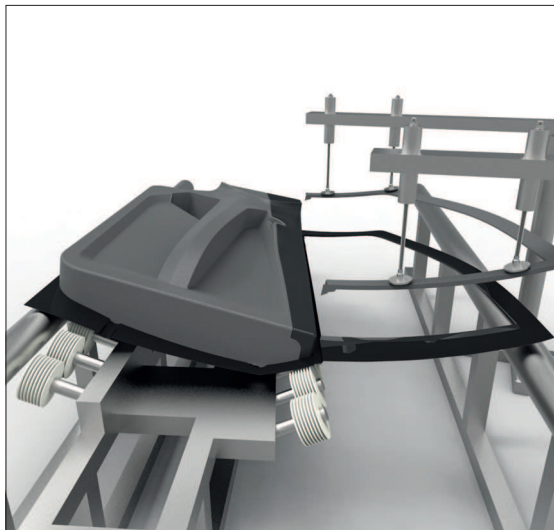


80 durometer:  
Skateboard wheel

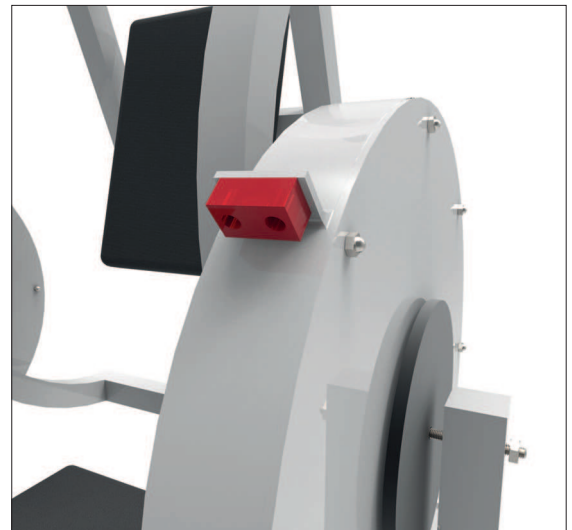


90 durometer:  
Hockey puck

### Applications



Rollers are used in car manufacturing to guide and align doors during bonding and curing applications



Bumpers have found their way into commercial exercise equipment to provide protection and stability during use.



## Materials colour guide and properties



**Nitrile and neoprene**

Nitrile - one colour

Neoprene - one colour

**Urethane**

35 Durometer (Yellow)

60 Durometer (Blue)

80 Durometer (Red)

95 Durometer (Orange)

Base Elastomer	Chemical Name	Advantages	Disadvantages	Max. Temp	Min. Temp	Material properties
Nitrile	Nitrile Butadiene	Resistant to petroleum, oil, alcohol & abrasion.	Affected by degreaser solvents.	Continuous 79°C Intermittent 107°C	-51°C	
Neoprene	Chloroprene	Flame and weather resistant. Resistant to Petroleum, oil, ozone & high temp.	Affected by phosphate hydraulic fluids, aromatic hydrocarbons.	Continuous 93°C Intermittent 121°C	-40°C	
Urethane	Di-Isocyanate Polyurethane	Highest abrasion resistance, strength & load bearing. High elongation, hardness. Resistance to Ozone & Oxygen.	Affected by ether, esters, acid, aromatics, alkalis.	Continuous 93°C Intermittent 121°C	-54°C	

Property:	Nitrile	Neoprene	Urethane
Tensile Strength	3 3	3 3 3	3 3 3 3
Ozone Resistance	3	3 3	3 3 3 3
Cut Resistance	3 3	3 3 3	3 3 3 3
Abrasion Resistance	3 3	3 3 3	3 3 3 3

Resistance To:	Nitrile	Neoprene	Urethane
Compression Set	3 3	3 3 3	3 3 3
ASTM #1 Oil	3 3 3 3	3 3	3 3 3 3
ASTM #2 Oil	3 3 3 3	3 3	3 3 3 3
Reference Fuel B	3 3 3	3 3	3 3 3 3
Ketones: MEK	3	3 3	3
Aromatics: Toluene	3 3 3	3	3 3 3 3
Aliphatics: Hexane	3 3 3 3	3 3 3	3 3 3 3
Ethyl Acetate	3	3 3 3	3
Cellosolve	3 3	3 3 3 3	3
Methylene Chloride	3	3	3 3 3 3
Trichloroethylene	3	3	3 3 3 3
Diethylene Glycol	3 3 3 3	3 3 3 3	3 3 3
Isopropyl Alcohol	3 3 3	3 3 3	3 3 3
Caustics: 10% NaOH	3 3 3	3 3 3	3
Acids: H2SO4	3 3	3 3 3	3

Excellent 3 3 3 3    Good 3 3 3    Fair 3 3    Poor 3



The tables below show the maximum theoretical radius loads that can be applied to the respective bearings. Refer to individual product tables to identify bearing type supplied with roller.

### Standard bearings

Bearing Type	Inside diameter (inches)	Outside diameter (inches)	Width (inches)	Load (Kg)	Speed (rpm)
A - Standard Double	.313/.317	.870/.875	.498/.502	55	50
				36	100
				24	250
				20	500
B - Standard Single	.500/505	1.245/1.250	.370/.380	119	50
				79	100
				51	250
				47	500
C - Standard Double	.500/505	1.245/1.250	.745/.755	192	50
				128	100
				83	250
				70	500

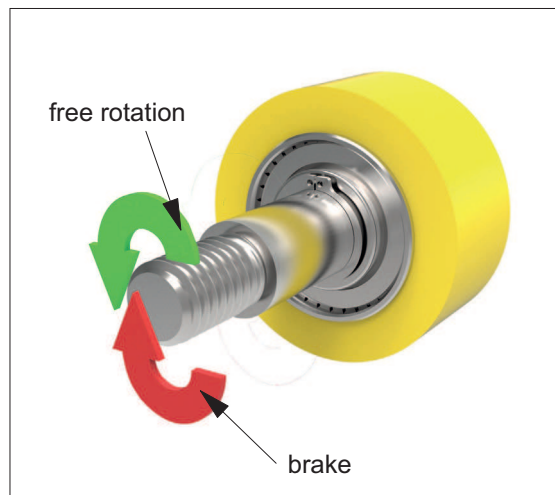
With the calculations above, typical life is approximately 2500 hours.

### Clutch bearings

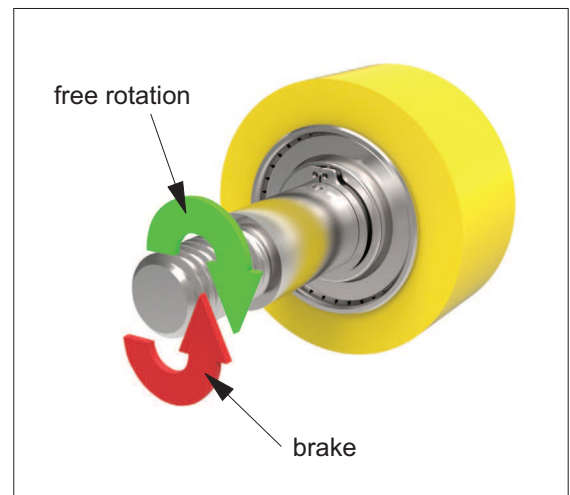
Bearing Type	Inside diameter (inches)	Outside diameter (inches)	Width (inches)	Load (Kg)	Speed (rpm)
H	.3745/.3750	.6245/.6255	.865/.875	167	33
				146	50
				116	100
				85	250
I	.6245/.6250	.8745/.8755	.990/1.000	277	33
				242	50
				192	100
				142	250

With the calculations above, typical life is approximately 1,000,000 revolutions or 500 hours. The bearings are shielded and pre-lubricated for life with grease.

A clutch roller can only be used in one direction, as shown. See data table for clutch direction of particular part.



Left clutch bearing



Right clutch bearing