

## 60626

ROLLERS & BUMPERS

### Material

Nitrile, urethane or neoprene bonded to a steel insert.

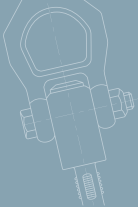
Hardness from 20-80 durometer (Shore A).

### Technical Notes

Designed to be mounted onto a shaft. A

hub extends past the roller and is supplied with two set screws at 90°.

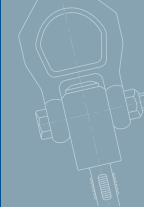
Order No.	Material	Durometer	d <sub>1</sub>	l <sub>1</sub>	d <sub>2</sub>	d <sub>3</sub>	l <sub>2</sub>
60626.W1002	Nitrile	20	38,10 (1,5")	22.36	31.75	12,72/12,83	9.65
60626.W1003	Nitrile	35	38,10 (1,5")	22.36	31.75	12,72/12,83	9.65
60626.W1006	Nitrile	60	38,10 (1,5")	22.36	31.75	12,72/12,83	9.65
60626.W1008	Nitrile	80	38,10 (1,5")	22.36	31.75	12,72/12,83	9.65
60626.W1012	Nitrile	20	50,80 (2,0")	31.75	23.37	12,72/12,83	12.70
60626.W1013	Nitrile	35	50,80 (2,0")	31.75	23.37	12,72/12,83	12.70
60626.W1016	Nitrile	60	50,80 (2,0")	31.75	23.37	12,72/12,83	12.70
60626.W1018	Nitrile	80	50,80 (2,0")	31.75	23.37	12,72/12,83	12.70
60626.W1022	Nitrile	20	50,80 (2,0")	31.75	23.37	19,08/19,20	12.70
60626.W1023	Nitrile	35	50,80 (2,0")	31.75	23.37	19,08/19,20	12.70
60626.W1026	Nitrile	60	50,80 (2,0")	31.75	23.37	19,08/19,20	12.70
60626.W1028	Nitrile	80	50,80 (2,0")	31.75	23.37	19,08/19,20	12.70
60626.W1032	Nitrile	20	50,80 (2,0")	31.75	49.28	12,73/12,83	12.70
60626.W1033	Nitrile	35	50,80 (2,0")	31.75	49.28	12,73/12,83	12.70
60626.W1036	Nitrile	60	50,80 (2,0")	31.75	49.28	12,73/12,83	12.70
60626.W1038	Nitrile	80	50,80 (2,0")	31.75	49.28	12,73/12,83	12.70
60626.W1042	Nitrile	20	50,80 (2,0")	31.75	49.28	19,08/19,20	12.70
60626.W1043	Nitrile	35	50,80 (2,0")	31.75	49.28	19,08/19,20	12.70
60626.W1046	Nitrile	60	50,80 (2,0")	31.75	49.28	19,08/19,20	12.70
60626.W1048	Nitrile	80	50,80 (2,0")	31.75	49.28	19,08/19,20	12.70
60626.W1052	Nitrile	20	63,50 (2,5")	31.75	23.37	12,73/12,83	12.70
60626.W1053	Nitrile	35	63,50 (2,5")	31.75	23.37	12,73/12,83	12.70
60626.W1056	Nitrile	60	63,50 (2,5")	31.75	23.37	12,73/12,83	12.70
60626.W1058	Nitrile	80	63,50 (2,5")	31.75	23.37	12,73/12,83	12.70
60626.W1062	Nitrile	20	63,50 (2,5")	34.79	23.37	19,08/19,20	12.70
60626.W1063	Nitrile	35	63,50 (2,5")	34.79	23.37	19,08/19,20	12.70
60626.W1066	Nitrile	60	63,50 (2,5")	34.79	23.37	19,08/19,20	12.70
60626.W1068	Nitrile	80	63,50 (2,5")	34.79	23.37	19,08/19,20	12.70
60626.W1072	Nitrile	20	63,50 (2,5")	31.75	49.28	12,73/12,83	12.70
60626.W1073	Nitrile	35	63,50 (2,5")	31.75	49.28	12,73/12,83	12.70
60626.W1076	Nitrile	60	63,50 (2,5")	31.75	49.28	12,73/12,83	12.70
60626.W1078	Nitrile	80	63,50 (2,5")	31.75	49.28	12,73/12,83	12.70
60626.W1082	Nitrile	20	63,50 (2,5")	31.75	49.28	19,08/19,20	12.70
60626.W1083	Nitrile	35	63,50 (2,5")	31.75	49.28	19,08/19,20	12.70
60626.W1086	Nitrile	60	63,50 (2,5")	31.75	49.28	19,08/19,20	12.70



Order No.	Material	Durometer	d <sub>1</sub>	l <sub>1</sub>	d <sub>2</sub>	d <sub>3</sub>	l <sub>2</sub>
60626.W1088	Nitrile	80	63,50 (2,5")	31.75	49.28	19,08/19,20	12.70
60626.W1092	Nitrile	20	63,50 (2,5")	34.79	49.28	25,42/25,55	12.70
60626.W1093	Nitrile	35	63,50 (2,5")	34.79	49.28	25,42/25,55	12.70
60626.W1096	Nitrile	60	63,50 (2,5")	34.79	49.28	25,42/25,55	12.70
60626.W1098	Nitrile	80	63,50 (2,5")	34.79	49.28	25,42/25,55	12.70
60626.W1102	Nitrile	20	101,6 (4,0")	31.75	23.37	12,73/12,83	12.70
60626.W1103	Nitrile	35	101,6 (4,0")	31.75	23.37	12,73/12,83	12.70
60626.W1106	Nitrile	60	101,6 (4,0")	31.75	23.37	12,73/12,83	12.70
60626.W1108	Nitrile	80	101,6 (4,0")	31.75	23.37	12,73/12,83	12.70
60626.W1112	Nitrile	20	101,6 (4,0")	31.75	23.37	19,08/19,20	12.70
60626.W1113	Nitrile	35	101,6 (4,0")	31.75	23.37	19,08/19,20	12.70
60626.W1116	Nitrile	60	101,6 (4,0")	31.75	23.37	19,08/19,20	12.70
60626.W1118	Nitrile	80	101,6 (4,0")	31.75	23.37	19,08/19,20	12.70
60626.W1122	Nitrile	20	101,6 (4,0")	31.75	49.28	12,73/12,83	12.70
60626.W1123	Nitrile	35	101,6 (4,0")	31.75	49.28	12,73/12,83	12.70
60626.W1126	Nitrile	60	101,6 (4,0")	31.75	49.28	12,73/12,83	12.70
60626.W1128	Nitrile	80	101,6 (4,0")	31.75	49.28	12,73/12,83	12.70
60626.W1132	Nitrile	20	101,6 (4,0")	31.75	49.28	19,08/19,20	12.70
60626.W1133	Nitrile	35	101,6 (4,0")	31.75	49.28	19,08/19,20	12.70
60626.W1136	Nitrile	60	101,6 (4,0")	31.75	49.28	19,08/19,20	12.70
60626.W1138	Nitrile	80	101,6 (4,0")	31.75	49.28	19,08/19,20	12.70
60626.W1146	Nitrile	60	101,6 (4,0")	34.80	49.28	31,78/31,90	12.70
60626.W2003	Urethane	35	38,10 (1,5")	22.36	31.75	12,72/12,83	9.65
60626.W2006	Urethane	60	38,10 (1,5")	22.36	31.75	12,72/12,83	9.65
60626.W2008	Urethane	80	38,10 (1,5")	22.36	31.75	12,72/12,83	9.65
60626.W2013	Urethane	35	50,80 (2,0")	31.75	23.37	12,72/12,83	12.70
60626.W2016	Urethane	60	50,80 (2,0")	31.75	23.37	12,72/12,83	12.70
60626.W2018	Urethane	80	50,80 (2,0")	31.75	23.37	12,72/12,83	12.70
60626.W2023	Urethane	35	50,80 (2,0")	31.75	23.37	19,08/19,20	12.70
60626.W2026	Urethane	60	50,80 (2,0")	31.75	23.37	19,08/19,20	12.70
60626.W2028	Urethane	80	50,80 (2,0")	31.75	23.37	19,08/19,20	12.70
60626.W2033	Urethane	35	50,80 (2,0")	31.75	49.28	12,73/12,83	12.70
60626.W2036	Urethane	60	50,80 (2,0")	31.75	49.28	12,73/12,83	12.70
60626.W2038	Urethane	80	50,80 (2,0")	31.75	49.28	12,73/12,83	12.70
60626.W2043	Urethane	35	50,80 (2,0")	31.75	49.28	19,08/19,20	12.70
60626.W2046	Urethane	60	50,80 (2,0")	31.75	49.28	19,08/19,20	12.70
60626.W2048	Urethane	80	50,80 (2,0")	31.75	49.28	19,08/19,20	12.70
60626.W2053	Urethane	35	63,50 (2,5")	31.75	23.37	12,73/12,83	12.70
60626.W2056	Urethane	60	63,50 (2,5")	31.75	23.37	12,73/12,83	12.70
60626.W2058	Urethane	80	63,50 (2,5")	31.75	23.37	12,73/12,83	12.70
60626.W2063	Urethane	35	63,50 (2,5")	34.79	23.37	19,08/19,20	12.70
60626.W2066	Urethane	60	63,50 (2,5")	34.79	23.37	19,08/19,20	12.70
60626.W2068	Urethane	80	63,50 (2,5")	34.79	23.37	19,08/19,20	12.70
60626.W2073	Urethane	35	63,50 (2,5")	31.75	49.28	12,73/12,83	12.70
60626.W2076	Urethane	60	63,50 (2,5")	31.75	49.28	12,73/12,83	12.70
60626.W2078	Urethane	80	63,50 (2,5")	31.75	49.28	12,73/12,83	12.70
60626.W2083	Urethane	35	63,50 (2,5")	31.75	49.28	19,08/19,20	12.70
60626.W2086	Urethane	60	63,50 (2,5")	31.75	49.28	19,08/19,20	12.70
60626.W2088	Urethane	80	63,50 (2,5")	31.75	49.28	19,08/19,20	12.70
60626.W2093	Urethane	35	63,50 (2,5")	34.79	49.28	25,42/25,55	12.70
60626.W2096	Urethane	60	63,50 (2,5")	34.79	49.28	25,42/25,55	12.70
60626.W2098	Urethane	80	63,50 (2,5")	34.79	49.28	25,42/25,55	12.70
60626.W2103	Urethane	35	101,6 (4,0")	31.75	23.37	12,73/12,83	12.70
60626.W2106	Urethane	60	101,6 (4,0")	31.75	23.37	12,73/12,83	12.70
60626.W2108	Urethane	80	101,6 (4,0")	31.75	23.37	12,73/12,83	12.70
60626.W2116	Urethane	60	101,6 (4,0")	31.75	23.37	19,08/19,20	12.70
60626.W2118	Urethane	80	101,6 (4,0")	31.75	23.37	19,08/19,20	12.70
60626.W2123	Urethane	35	101,6 (4,0")	31.75	49.28	12,73/12,83	12.70
60626.W2126	Urethane	60	101,6 (4,0")	31.75	49.28	12,73/12,83	12.70
60626.W2128	Urethane	80	101,6 (4,0")	31.75	49.28	12,73/12,83	12.70
60626.W2133	Urethane	35	101,6 (4,0")	31.75	49.28	19,08/19,20	12.70
60626.W2136	Urethane	60	101,6 (4,0")	31.75	49.28	19,08/19,20	12.70
60626.W2138	Urethane	80	101,6 (4,0")	31.75	49.28	19,08/19,20	12.70
60626.W2146	Urethane	60	101,6 (4,0")	34.80	49.28	31,78/31,90	12.70
60626.W2148	Urethane	80	101,6 (4,0")	34.80	49.28	31,78/31,90	12.70
60626.W2153	Urethane	35	127,0 (5,0")	31.75	49.28	12,72/12,83	12.70
60626.W2156	Urethane	60	127,0 (5,0")	31.75	49.28	12,72/12,83	12.70
60626.W2158	Urethane	80	127,0 (5,0")	31.75	49.28	12,72/12,83	12.70
60626.W2163	Urethane	35	127,0 (5,0")	31.75	49.28	19,07/19,20	12.70



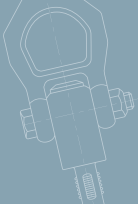
# Solid Roller shaft drive



# Rollers & Bumpers

Order No.	Material	Durometer	d <sub>1</sub>	l <sub>1</sub>	d <sub>2</sub>	d <sub>3</sub>	l <sub>2</sub>
60626.W2166	Urethane	60	127,0 (5,0")	31.75	49.28	19,07/19,20	12.70
60626.W2168	Urethane	80	127,0 (5,0")	31.75	49.28	19,07/19,20	12.70
60626.W2173	Urethane	35	127,0 (5,0")	41.40	49.28	31,78/31,90	12.70
60626.W2176	Urethane	60	127,0 (5,0")	41.40	49.28	31,78/31,90	12.70
60626.W2178	Urethane	80	127,0 (5,0")	41.40	49.28	31,78/31,90	12.70
60626.W2183	Urethane	35	152,4 (6,0")	31.75	49.28	12,73/12,83	12.70
60626.W2186	Urethane	60	152,4 (6,0")	31.75	49.28	12,73/12,83	12.70
60626.W2188	Urethane	80	152,4 (6,0")	31.75	49.28	12,73/12,83	12.70
60626.W2193	Urethane	35	152,4 (6,0")	31.75	49.28	19,08/19,20	12.70
60626.W2196	Urethane	60	152,4 (6,0")	31.75	49.28	19,08/19,20	12.70
60626.W2198	Urethane	80	152,4 (6,0")	31.75	49.28	19,08/19,20	12.70
60626.W2203	Urethane	35	152,4 (6,0")	41.40	49.28	31,78/31,90	12.70
60626.W2206	Urethane	60	152,4 (6,0")	41.40	49.28	31,78/31,90	12.70
60626.W2208	Urethane	80	152,4 (6,0")	41.40	49.28	31,78/31,90	12.70
60626.W3002	Neoprene	20	38,10 (1,5")	22.36	31.75	12,72/12,83	9.65
60626.W3003	Neoprene	35	38,10 (1,5")	22.36	31.75	12,72/12,83	9.65
60626.W3006	Neoprene	60	38,10 (1,5")	22.36	31.75	12,72/12,83	9.65
60626.W3008	Neoprene	80	38,10 (1,5")	22.36	31.75	12,72/12,83	9.65
60626.W3012	Neoprene	20	50,80 (2,0")	31.75	23.37	12,72/12,83	12.70
60626.W3013	Neoprene	35	50,80 (2,0")	31.75	23.37	12,72/12,83	12.70
60626.W3016	Neoprene	60	50,80 (2,0")	31.75	23.37	12,72/12,83	12.70
60626.W3018	Neoprene	80	50,80 (2,0")	31.75	23.37	12,72/12,83	12.70
60626.W3022	Neoprene	20	50,80 (2,0")	31.75	23.37	19,08/19,20	12.70
60626.W3023	Neoprene	35	50,80 (2,0")	31.75	23.37	19,08/19,20	12.70
60626.W3026	Neoprene	60	50,80 (2,0")	31.75	23.37	19,08/19,20	12.70
60626.W3028	Neoprene	80	50,80 (2,0")	31.75	23.37	19,08/19,20	12.70
60626.W3032	Neoprene	20	50,80 (2,0")	31.75	49.28	12,73/12,83	12.70
60626.W3033	Neoprene	35	50,80 (2,0")	31.75	49.28	12,73/12,83	12.70
60626.W3036	Neoprene	60	50,80 (2,0")	31.75	49.28	12,73/12,83	12.70
60626.W3038	Neoprene	80	50,80 (2,0")	31.75	49.28	12,73/12,83	12.70
60626.W3042	Neoprene	20	50,80 (2,0")	31.75	49.28	19,08/19,20	12.70
60626.W3043	Neoprene	35	50,80 (2,0")	31.75	49.28	19,08/19,20	12.70
60626.W3046	Neoprene	60	50,80 (2,0")	31.75	49.28	19,08/19,20	12.70
60626.W3048	Neoprene	80	50,80 (2,0")	31.75	49.28	19,08/19,20	12.70
60626.W3052	Neoprene	20	63,50 (2,5")	31.75	23.37	12,73/12,83	12.70
60626.W3053	Neoprene	35	63,50 (2,5")	31.75	23.37	12,73/12,83	12.70
60626.W3056	Neoprene	60	63,50 (2,5")	31.75	23.37	12,73/12,83	12.70
60626.W3058	Neoprene	80	63,50 (2,5")	31.75	23.37	12,73/12,83	12.70
60626.W3062	Neoprene	20	63,50 (2,5")	34.79	23.37	19,08/19,20	12.70
60626.W3063	Neoprene	35	63,50 (2,5")	34.79	23.37	19,08/19,20	12.70
60626.W3066	Neoprene	60	63,50 (2,5")	34.79	23.37	19,08/19,20	12.70
60626.W3068	Neoprene	80	63,50 (2,5")	34.79	23.37	19,08/19,20	12.70
60626.W3072	Neoprene	20	63,50 (2,5")	31.75	49.28	12,73/12,83	12.70
60626.W3073	Neoprene	35	63,50 (2,5")	31.75	49.28	12,73/12,83	12.70
60626.W3076	Neoprene	60	63,50 (2,5")	31.75	49.28	12,73/12,83	12.70
60626.W3078	Neoprene	80	63,50 (2,5")	31.75	49.28	12,73/12,83	12.70
60626.W3082	Neoprene	20	63,50 (2,5")	31.75	49.28	19,08/19,20	12.70
60626.W3083	Neoprene	35	63,50 (2,5")	31.75	49.28	19,08/19,20	12.70
60626.W3086	Neoprene	60	63,50 (2,5")	31.75	49.28	19,08/19,20	12.70
60626.W3088	Neoprene	80	63,50 (2,5")	31.75	49.28	19,08/19,20	12.70
60626.W3092	Neoprene	20	63,50 (2,5")	34.79	49.28	25,42/25,55	12.70
60626.W3093	Neoprene	35	63,50 (2,5")	34.79	49.28	25,42/25,55	12.70
60626.W3096	Neoprene	60	63,50 (2,5")	34.79	49.28	25,42/25,55	12.70
60626.W3098	Neoprene	80	63,50 (2,5")	34.79	49.28	25,42/25,55	12.70
60626.W3102	Neoprene	20	101,6 (4,0")	31.75	23.37	12,73/12,83	12.70
60626.W3103	Neoprene	35	101,6 (4,0")	31.75	23.37	12,73/12,83	12.70
60626.W3106	Neoprene	60	101,6 (4,0")	31.75	23.37	12,73/12,83	12.70
60626.W3108	Neoprene	80	101,6 (4,0")	31.75	23.37	12,73/12,83	12.70
60626.W3112	Neoprene	20	101,6 (4,0")	31.75	23.37	19,08/19,20	12.70
60626.W3113	Neoprene	35	101,6 (4,0")	31.75	23.37	19,08/19,20	12.70
60626.W3116	Neoprene	60	101,6 (4,0")	31.75	23.37	19,08/19,20	12.70
60626.W3118	Neoprene	80	101,6 (4,0")	31.75	23.37	19,08/19,20	12.70
60626.W3122	Neoprene	20	101,6 (4,0")	31.75	49.28	12,73/12,83	12.70
60626.W3123	Neoprene	35	101,6 (4,0")	31.75	49.28	12,73/12,83	12.70
60626.W3126	Neoprene	60	101,6 (4,0")	31.75	49.28	12,73/12,83	12.70
60626.W3128	Neoprene	80	101,6 (4,0")	31.75	49.28	12,73/12,83	12.70
60626.W3132	Neoprene	20	101,6 (4,0")	31.75	49.28	19,08/19,20	12.70
60626.W3133	Neoprene	35	101,6 (4,0")	31.75	49.28	19,08/19,20	12.70
60626.W3136	Neoprene	60	101,6 (4,0")	31.75	49.28	19,08/19,20	12.70

ROLLERS & BUMPERS



Order No.	Material	Durometer	d <sub>1</sub>	l <sub>1</sub>	d <sub>2</sub>	d <sub>3</sub>	l <sub>2</sub>
<b>60626.W3138</b>	Neoprene	80	101,6 (4,0")	31.75	49.28	19,08/19,20	12.70
<b>60626.W3143</b>	Neoprene	60	101,6 (4,0")	34.80	49.28	31,78/31,90	12.70
<b>60626.W3146</b>	Neoprene	60	101,6 (4,0")	34.80	49.28	31,78/31,90	12.70

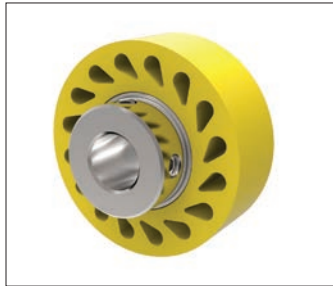


### Wixroyd Rollers

#### Product overview



**Solid rollers** - have a smooth surface and a solid body



**Durasoft rollers** - have a smooth contact surface with teardrop holes to allow greater roller compression under load.



**Finned rollers** - are grooved and provide self-cleaning as dirt, debris and liquid pass under the contact surface of the roller.

#### Durability levels



20 durometer:  
Stiff foam rubber



35 durometer:  
Pencil rubber top



60 durometer:  
Car tyre

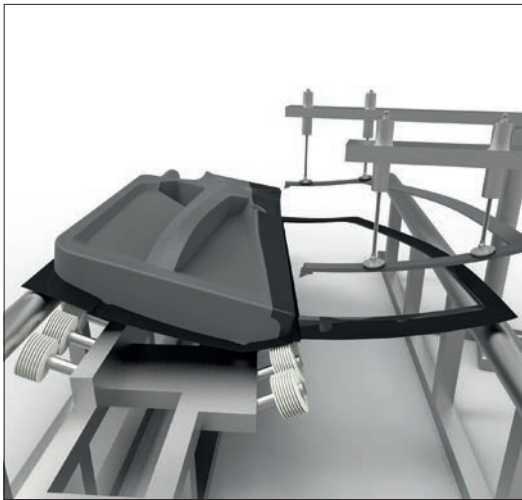


80 durometer:  
Skateboard wheel

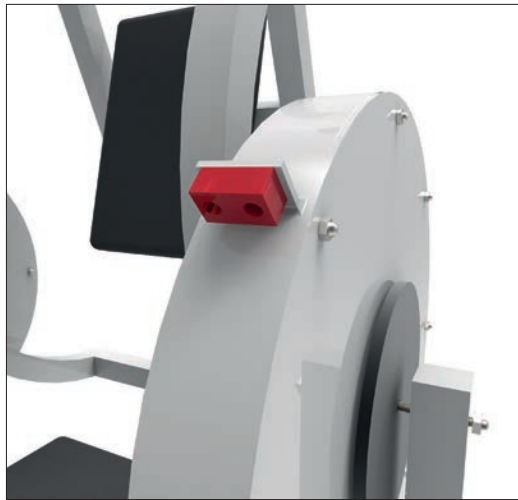


90 durometer:  
Hockey puck

#### Applications



Rollers are used in car manufacturing to guide and align doors during bonding and curing applications



Bumpers have found their way into commercial exercise equipment to provide protection and stability during use.



## Materials colour guide and properties

### Nitrile and neoprene



Nitrile - one colour



Neoprene - one colour

### Urethane



35 Durometer (Yellow)



60 Durometer (Blue)



80 Durometer (Red)



95 Durometer (Orange)

### Material properties

Base Elastomer	Chemical Name	Advantages	Disadvantages	Max. Temp	Min. Temp
Nitrile	Nitrile Butadiene	Resistant to petroleum, oil, alcohol & abrasion.	Affected by degreaser solvents.	Continuous 79°C Intermittent 107°C	-51°C
Neoprene	Chloroprene	Flame and weather resistant. Resistant to Petroleum, oil, ozone & high temp.	Affected by phosphate hydraulic fluids, aromatic hydrocarbons.	Continuous 93°C Intermittent 121°C	-40°C
Urethane	Di-Isocyanate Polyurethane	Highest abrasion resistance, strength & load bearing. High elongation, hardness. Resistance to Ozone & Oxygen.	Affected by ether, esters, acid, aromatics, alkalis.	Continuous 93°C Intermittent 121°C	-54°C

Property:	Nitrile	Neoprene	Urethane	
Tensile Strength	✓ ✓	✓ ✓ ✓	✓ ✓ ✓ ✓	
Ozone Resistance	✓	✓ ✓	✓ ✓ ✓ ✓	
Cut Resistance	✓ ✓	✓ ✓ ✓	✓ ✓ ✓ ✓	
Abrasion Resistance	✓ ✓	✓ ✓ ✓	✓ ✓ ✓ ✓	
Resistance To:	Nitrile	Neoprene	Urethane	
Compression Set	✓ ✓	✓ ✓ ✓	✓ ✓ ✓	
ASTM #1 Oil	✓ ✓ ✓ ✓	✓ ✓	✓ ✓ ✓ ✓	
ASTM #2 Oil	✓ ✓ ✓ ✓	✓ ✓	✓ ✓ ✓ ✓	
Reference Fuel B	✓ ✓ ✓	✓ ✓	✓ ✓ ✓ ✓	
Ketones: MEK	✓	✓ ✓	✓	
Aromatics: Toluene	✓ ✓ ✓	✓	✓ ✓ ✓ ✓	
Aliphatics: Hexane	✓ ✓ ✓ ✓	✓ ✓ ✓	✓ ✓ ✓ ✓	
Ethyl Acetate	✓	✓ ✓ ✓	✓	
Cellosolve	✓ ✓	✓ ✓ ✓ ✓	✓	
Methylene Chloride	✓	✓	✓ ✓ ✓ ✓	
Trichloroethylene	✓	✓	✓ ✓ ✓ ✓	
Diethylene Glycol	✓ ✓ ✓ ✓	✓ ✓ ✓ ✓	✓ ✓ ✓	
Isopropyl Alcohol	✓ ✓ ✓	✓ ✓ ✓	✓ ✓ ✓	
Caustics: 10% NaOH	✓ ✓ ✓	✓ ✓ ✓	✓	
Acids: H2SO4	✓ ✓	✓ ✓ ✓	✓	
Excellent	✓ ✓ ✓ ✓	Good ✓ ✓ ✓	Fair ✓ ✓	Poor ✓



The tables below show the maximum theoretical radius loads that can be applied to the respective bearings. Refer to individual product tables to identify bearing type supplied with roller.

Bearing Type	Inside diameter (inches)	Outside diameter (inches)	Width (inches)	Load (Kg)	Speed (rpm)
A - Standard Double	.313/.317	.870/.875	.498/.502	55	50
				36	100
				24	250
				20	500
B - Standard Single	.500/.505	1.245/1.250	.370/.380	119	50
				79	100
				51	250
				47	500
C - Standard Double	.500/.505	1.245/1.250	.745/.755	192	50
				128	100
				83	250
				70	500

### Standard bearings

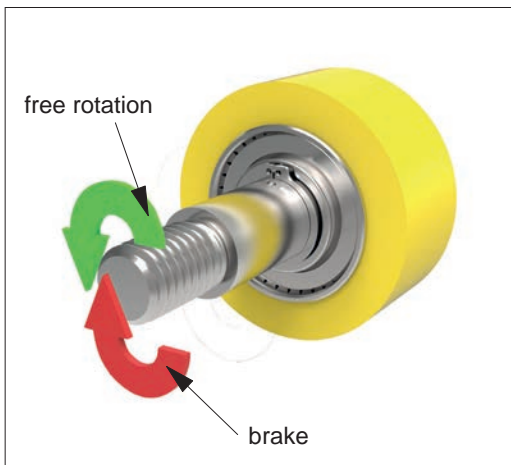
With the calculations above, typical life is approximately 2500 hours.

Bearing Type	Inside diameter (inches)	Outside diameter (inches)	Width (inches)	Load (Kg)	Speed (rpm)
H	.3745/.3750	.6245/.6255	.865/.875	167	33
				146	50
				116	100
				85	250
I	.6245/.6250	.8745/.8755	.990/1.000	277	33
				242	50
				192	100
				142	250

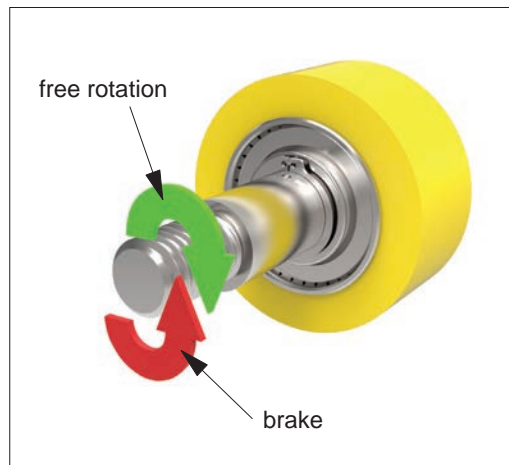
### Clutch bearings

With the calculations above, typical life is approximately 1,000,000 revolutions or 500 hours. The bearings are shielded and pre-lubricated for life with grease.

A clutch roller can only be used in one direction, as shown. See data table for clutch direction of particular part.



Left clutch bearing



Right clutch bearing