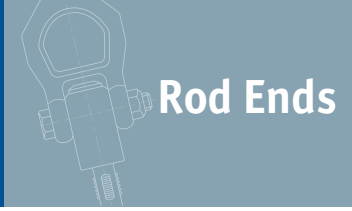


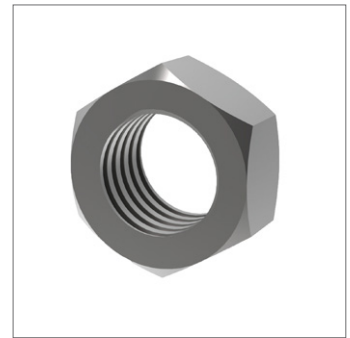
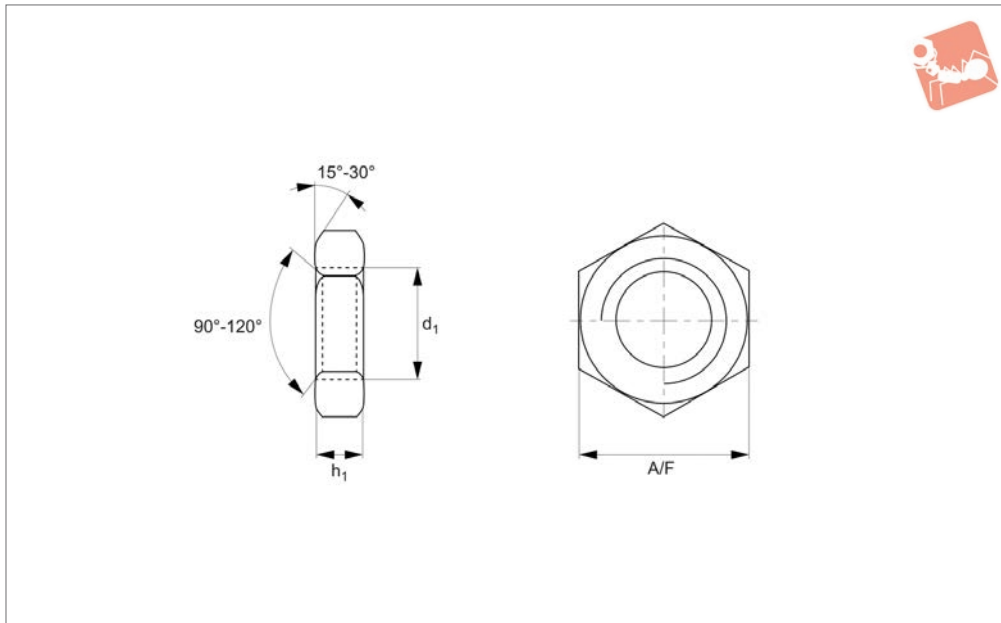


# Lock Nuts Coarse Thread

Steel, self-colour



## Rod Ends



**65690.SC**

ROD ENDS

### Material

Steel (class 4), self-colour.

threads.

For fine thread lock nuts see P0306.

### Technical Notes

To DIN 439. Standard metric coarse pitch

Order No.	d <sub>1</sub>	h <sub>1</sub>	A/F	Material
65690.020-SC	M 2	0.95	4	Steel SC
65690.025-SC	M2,6	1.35	5	Steel SC
65690.030-SC	M 3	1.55	5.5	Steel SC
65690.040-SC	M 4	1.95	7	Steel SC
65690.050-SC	M 5	2.45	8	Steel SC
65690.060-SC	M 6	2.9	10	Steel SC
65690.080-SC	M 8	3.7	13	Steel SC
65690.100-SC	M10	4.7	17	Steel SC
65690.120-SC	M12	5.7	19	Steel SC
65690.140-SC	M14	6.42	22	Steel SC
65690.160-SC	M16	7.42	24	Steel SC
65690.180-SC	M18	8.42	27	Steel SC
65690.200-SC	M20	9.1	30	Steel SC
65690.220-SC	M22	9.9	34	Steel SC
65690.240-SC	M24	10.9	36	Steel SC
65690.270-SC	M27	12.4	41	Steel SC
65690.300-SC	M30	13.9	46	Steel SC
65690.330-SC	M33	15.4	50	Steel SC
65690.360-SC	M36	16.9	55	Steel SC