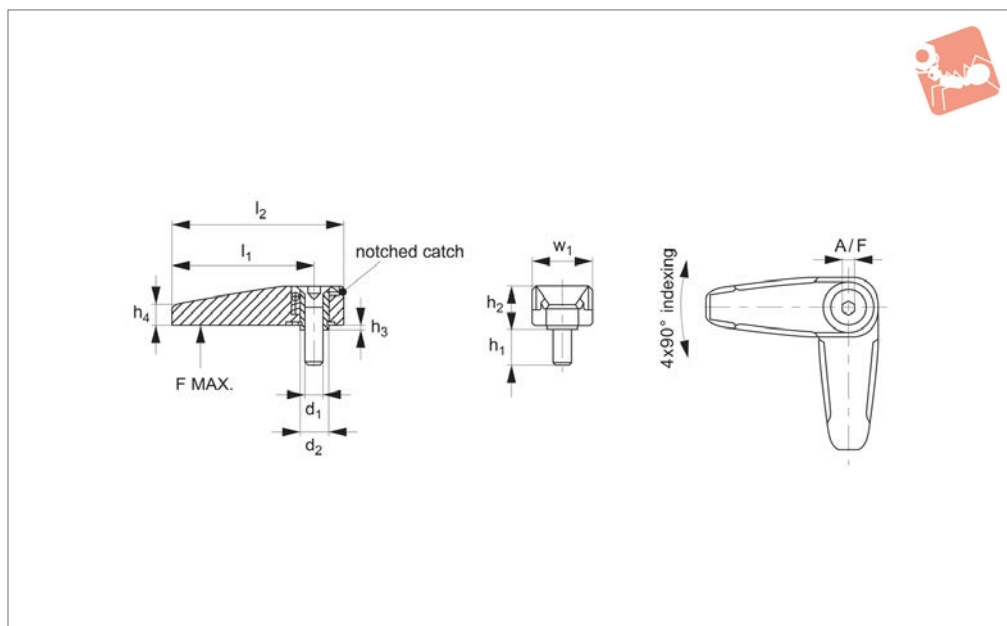


Retaining Catches

one-sided



73900

RETAINING CATCHES

Material

Body: die cast zinc, black coated to RAL 9005 or silver coated to RAL 9006.
Fixing screw: stainless steel A2.

Inner parts: dry powdered metal.

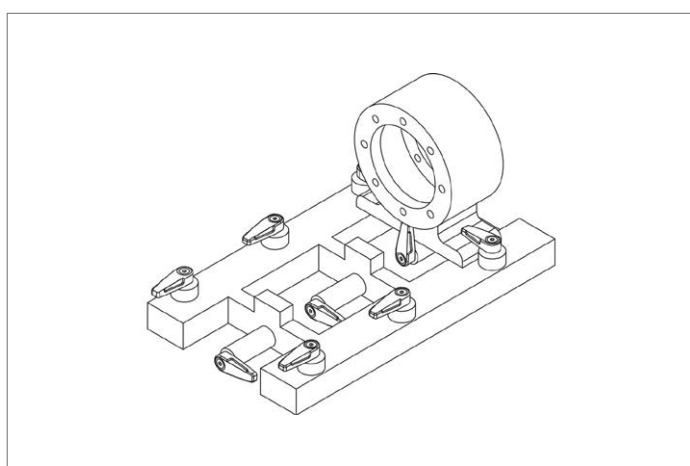
Technical Notes

Quick retaining catch with positive index-

ing. Ideal for retaining doors, panels as well as for retaining parts during transportation.

Retaining catch is indexed 4x90°.

Order No.	Colour	d ₁	d ₂	l ₁	l ₂	h ₁	h ₂	h ₃	h ₄	Load F N max.	w ₁	A/F	Weight g
73900.W0101	Silver	M 6	9	45	55	12	13.3	0.8	6.5	500	19.0	4	59
73900.W0102	Black	M 6	9	45	55	12	13.3	0.8	6.5	500	19.0	4	59
73900.W0151	Silver	M 8	14	65	78	14	15.8	0.8	9.0	1000	25.2	5	136
73900.W0152	Black	M 8	14	65	78	14	15.8	0.8	9.0	1000	25.2	5	136



73900

Knobs, Handles
& Handwheels

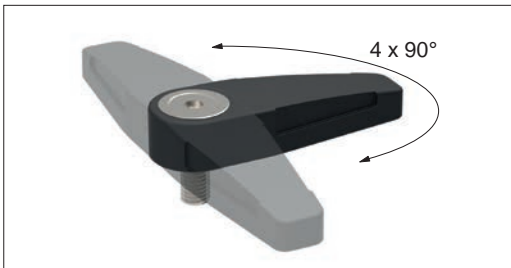


Retaining Catches

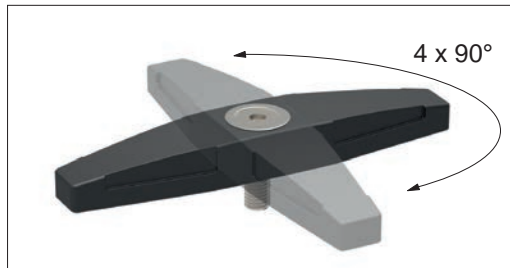


- Locking of panels and covers.
- Securing components during transport.
- Sturdy, solid design.
- Double sided model available.
- Indexes at $4 \times 90^\circ$.

Models

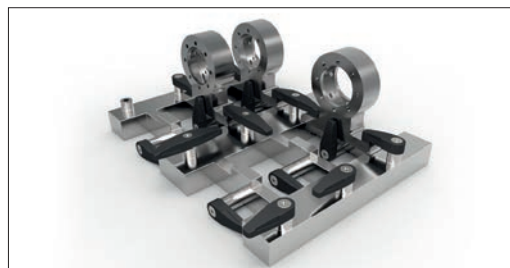
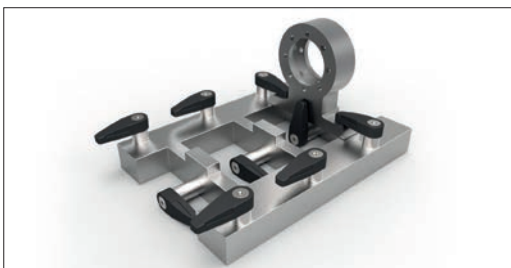


Single side



Double side

Applications

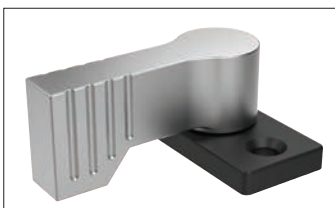


73906

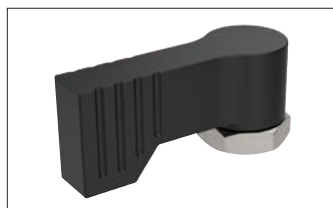
Retaining Catches

- Locking of drawers.
- Securing of panels and covers.
- Simple operation.
- Indexes at $4 \times 90^\circ$.
- Three mounting options.

Mounting options



Flange



Female thread



Male thread

Applications

