

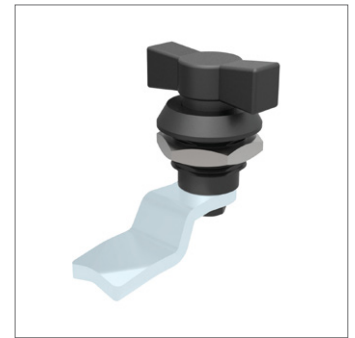
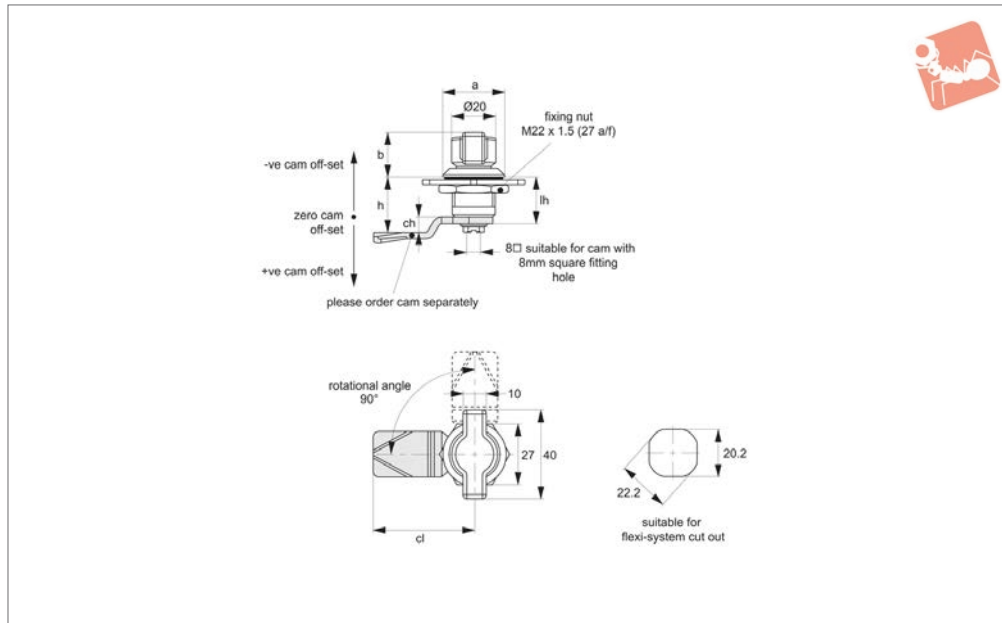


Cam Latches - Flexi-System

fixed grip - wing handle - ergonomic



Cam Latches



A1181

CAM LATCHES

Material

Body: die cast zinc.
Handle: black plastic (PA6).
Not supplied: CAM - order separately.

Technical Notes

Order cam separately.
Cams: see suitable cam A0203, A0224 and A0240. Select „without projection“ cam type.

Dimensions ch and cl relate to cam. Use formula to calculate ch (required cam off-set), and refer to cam selection chart;
ch = h - lh where;
ch = required cam off-set/height.
h = grip length (distance between inside of latch face and front of cam).
lh = body length of cam latch/lock to be used (see product table below).

Rods & Guides: to achieve 3-point latching - A0303, A0321, A0325.

Tips

Wing actuates lock, and also acts as a knob/handle. Quarter-turn opening or closing.

Important Notes

Sold subject to pack quantity.

Order No.	Body finish	Handle	a	b	lh
A1181.AW0110	Chrome Plated	Black Plastic	28	20	18
A1181.AW0210	Black Coated	Black Plastic	28	20	18
A1181.AW0510	Black Plastic	Black Plastic	28	20	18