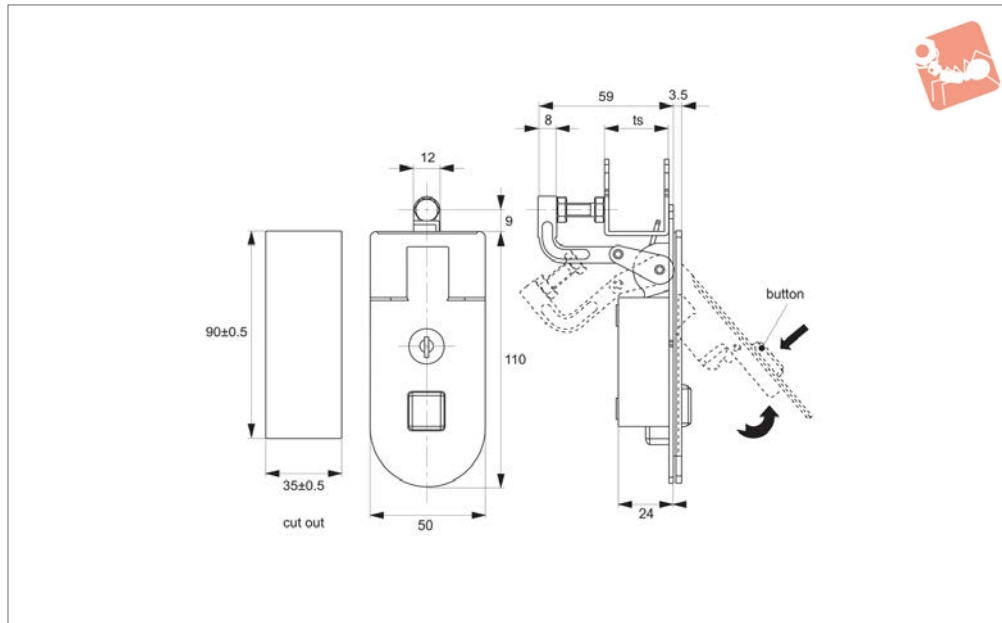




# Compression Locks

lever latch - adjustable grip - zinc

## Compression Latches



### A1751

COMPRESSION LATCHES

#### Material

Body and handle: die cast zinc, black power coated.  
Cylinder lock: die cast zinc.  
Screw: steel, white zinc plated.

**Supplied with:** KEY.

#### Technical Notes

Grip adjustment 31-48mm.

#### Tips

Quick-open, easy assembling. Grip length can be adjusted via clamping screw to suit your application.

Order No.	Finish	Lock type	ts grip adj.
A1751.AW0310	Black Coated	Std. Cylinder	31-48



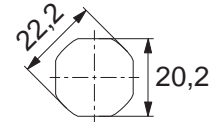
When selecting a Wixroyd Cam Latch for your application, you need to answer these questions:

1. Which installation cut out?
2. Which body style?
3. Which locking key?
4. Which accessories?
5. Which cam type and size?

### Step 1: Which installation cut out?

#### Cut out

All our Flexi-System cam latches use a standard installation cut out 22,2 dia, 20,2 square, for maximum flexibility. We also provide a number of alternative cut out dimensions for legacy/historical installations.



flexi-system  
cut out

### Step 2: Which body style?

#### Material and finish

Select from our variety of die cast zinc, polyamide plastic and stainless versions.



Die-cast  
zinc chrome  
plate



Die-cast  
zinc black  
coated



Polyamide  
black



Stainless  
steel

#### Actuation and locking method

Standard insert driver type, cylinder lock or wing handle type.



Insert driver



Cylinder lock



Wing handle

#### Number of latching points in application

Typically single point latching is required, but the Wixroyd Flexi-System also provides multi-point latching (typically 3 point - at lock point, top and bottom of cabinet).



Single point



Two point



Multi-point

### Step 3: Which locking key?

#### Standard insert driver keys

Our range of insert driver cam latches require a simple key to actuate. Refer to part A0102 and A0103 for correct keys.



#### Cylinder locking

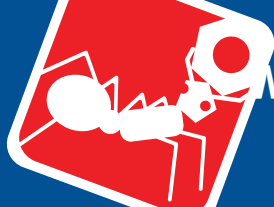
Our cam locks with cylinder locks are supplied with two keys per lock. Available as keyed alike or keyed to differ locks.



### Step 4: Which accessories?

- Multi-point latching: use our rod set A0303 to A0325 for suitable rods and rod guides.
- Finger pulls: easily installed with any of our flexi-system cam bodies, finger pull no. A0352 is a simple, cost effective handle for your cabinets.
- Dust Cap: to reduce material ingress.








# Wixroyd Cam and Compression Latches

product selection charts



## Cam Latches and Locks




Miscellaneous Cut out	Actuation Method	Body	Finishes	Cam Type								
Insert Driver	Cylinder Lock	Manual/Grip	Body length (mm)	Die-Cast Zinc	Polyamide Plastic	Stainless Steel	Chrome Plated	Black Coated	Natural	With Projection	W/O Projection	IP Rating
A1192 - Mini Cam Latch - Wing Handle - Fixed Grip												
	✓	10	✓			✓						
Cams: Supplied - Keys: N/A												
A1506 - Panel Latches - Fixed Grip												
	✓	25		✓				✓				54
Cams: Supplied - Keys: A0102												
A1520 - Cam Lock - Fixed Grip												
	✓	18		✓				✓				
Cams: Supplied - Keys: A0102												
A1546 - Panel Latch - Uncovered												
	✓		✓			✓						
Cams: Supplied - Keys: N/A												
A1561 - Panel Latch - with Cover												
	✓	22,5		✓				✓				
Cams: Supplied - Keys: N/A												
A1701 - Compression Latch - Lever Latch - Flush Trigger												
	✓		✓			✓						
Cams: N/A - Keys: Supplied												
A1707 - Compression Latch - Lever Latch - Raised Trigger												
	✓	19	✓				✓					
Cams: Supplied - Keys: Supplied												
A1751 - Compression Latch - Lever Latch												
	✓		✓				✓					
Cams: N/A - Keys: Supplied												

Miscellaneous Cut out	Actuation Method	Body	Finishes	Cam Type									
	Insert Driver	Cylinder Lock	Manual/Grip	Body length (mm)	Die-Cast Zinc	Polyamide Plastic	Stainless Steel	Chrome Plated	Black Coated	Natural	With Projection	W/O Projection	IP Rating
A4241 - Cam Latch - with Rod Control - Extended Cover													
	✓				✓				✓		✓		40
Cams: A0203, A0224, A0240 - Keys: A0102													
A4260 - Cam Lock - with Rod Control - Wing Handle - Extended Cover													
	✓				✓				✓		✓		54
Cams: A0203, A0224, A0240 - Keys: A0102													
A4221 - Cam Latch - with Rod Control - with Cover													
	✓		Various		✓				✓		✓		
Cams: A0203, A0224 - Keys: A0102													

COMPRESSION LATCHES



Miscellaneous Cut out	Actuation Method			Body length (mm)	Body			Finishes			Cam Type		
	Insert Driver	Cylinder Lock	Manual/Grip		Die-Cast Zinc	Polyamide Plastic	Stainless Steel	Chrome Plated	Black Coated	Natural	With Projection	W/O Projection	IP Rating
A1192 - Mini Cam Latch - Wing Handle - Fixed Grip													
		✓		10	✓			✓					
Cams: Supplied - Keys: N/A													
A1506 - Panel Latches - Fixed Grip													
	✓			25		✓			✓			54	
Cams: Supplied - Keys: A0102													
A1520 - Cam Lock - Fixed Grip													
	✓			18	✓				✓				
Cams: Supplied - Keys: A0102													
A1546 - Panel Latch - Uncovered													
		✓			✓			✓					
Cams: Supplied - Keys: N/A													
A1561 - Panel Latch - with Cover													
	✓			22,5	✓				✓				
Cams: Supplied - Keys: N/A													
A1701 - Compression Latch - Lever Latch - Flush Trigger													
	✓				✓			✓					
Cams: N/A - Keys: Supplied													
A1707 - Compression Latch - Lever Latch - Raised Trigger													
	✓			19	✓			✓					
Cams: Supplied - Keys: Supplied													
A1751 - Compression Latch - Lever Latch													
	✓				✓			✓					
Cams: N/A - Keys: Supplied													

Miscellaneous Cut out	Actuation Method			Body length (mm)	Body			Finishes			Cam Type		
	Insert Driver	Cylinder Lock	Manual/Grip		Die-Cast Zinc	Polyamide Plastic	Stainless Steel	Chrome Plated	Black Coated	Natural	With Projection	W/O Projection	IP Rating
A4241 - Cam Latch - with Rod Control - Extended Cover													
	✓				✓				✓		✓	40	
Cams: A0203, A0224, A0240 - Keys: A0102													
A4260 - Cam Lock - with Rod Control - Wing Handle - Extended Cover													
	✓				✓				✓		✓	54	
Cams: A0203, A0224, A0240 - Keys: A0102													
A4221 - Cam Latch - with Rod Control - with Cover													
	✓			Various	✓				✓		✓		
Cams: A0203, A0224 - Keys: A0102													