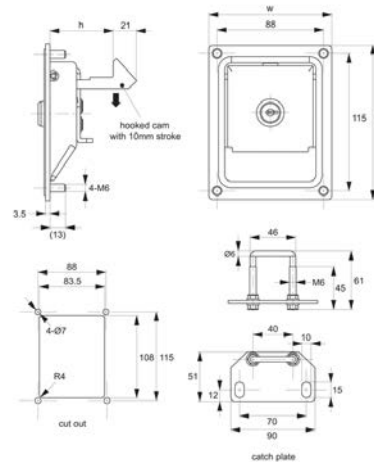


Push To Close Paddle Latches

pull to open - slam action - standard cylinder lock -

Paddle Latches



B4733

PADDLE LATCHES

Material

Body and Handle: steel, black powder coated.

Cylinder lock: die cast zinc, zinc plated.

Supplied with: Keys: two per lock.

Not Supplied: Catch plate: please order

separately.

Technical Notes

Stud fixing type has 4 off M 6 welded studs for rear mounting with M 6 nuts (not supplied).

Tips

Fully integrated lock, latch and flush fitting paddle handle, ideal for generators, compressors, electric panels and doors.

Order No.	Lock type	Type	h	l	w
B4733.AW0010	Std. Cylinder	Latch	30.5	127	101.5
B4733.AW0020	Std. Cylinder	Latch	43.0	127	101.5
B4733.AW0030	Std. Cylinder	Latch	54.0	127	101.5
B4733.AW0040	Blank - No Lock	Latch	30.5	127	101.5
B4733.AW0050	Blank - No Lock	Latch	43.0	127	101.5