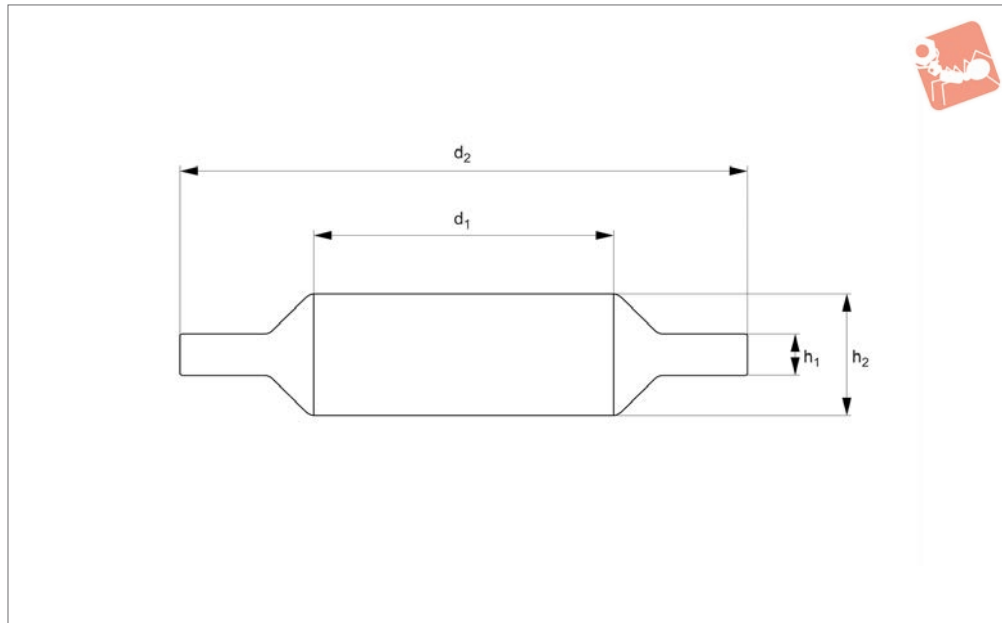




Heavy Duty Soft-Opening Stays

For downward opening lid, 90° opening angle

Soft & Spring Stays



N0420

SOFT & SPRING STAYS

Material

Arm: zinc alloy, steel, bright nickel finish.
Body: plastic.

Technical Notes

For use with lids which are downward opening, with piano, butt or drop hinges. Designed to hold door in both closed and open position. Designed to control speed

at which a suitable lid opens, for smooth controlled motion. For use in pairs. Opening angle of 90°. Temperature range 0° to 40°C.

Important Notes

Improper application, or use on a lid not within recommended size and load bearing value, may lead to stay being overcome

and slamming of lid.

Application must be within both the min. and max. load bearing value, stays are for use in pairs see above table.

Check Load Bearing Value (T):

T (Load Bearing Value of stay Kg/ cm) = $\frac{1}{2}$ Door Height cm x Door Weight Kg

Order No.	Type	Acceptable load bearing pair kg/cm min. max.	Hand	Weight g
N0420.AC0020	Light Duty	140 to 200	Left	290
N0420.AC0025	Medium Duty	200 to 250	Left	290
N0420.AC0030	Heavy Duty	250 to 300	Left	310
N0420.AC0120	Light Duty	140 to 200	Right	290
N0420.AC0125	Medium Duty	200 to 250	Right	290
N0420.AC0130	Heavy Duty	250 to 300	right	310

