

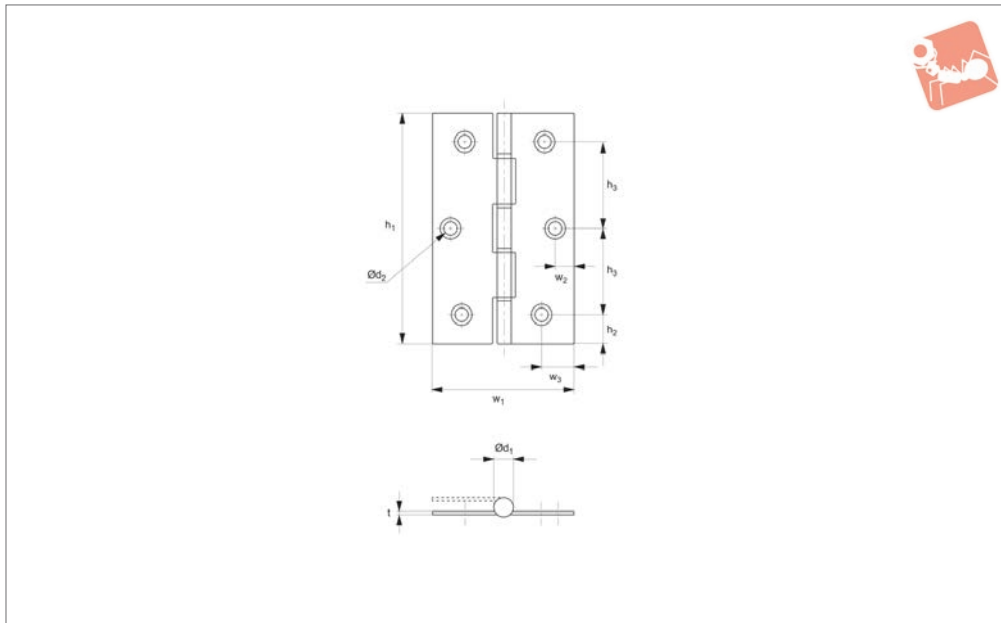


# Surface Mount - Leaf hinges

with polyacetal bushing - screw mount - **stainless**



## Hinges



**S0700**

HINGES

**Material**

Body: stainless steel, AISI 304, polished finish.

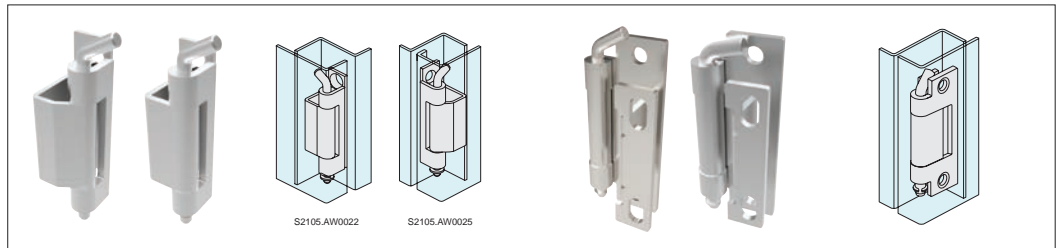
Bushing: polyacetal.

Order No.	$h_1$	$h_2$	$h_3$	$t$	$w_1$	$w_2$	$w_3$	$d_1$	$d_2$	No. of knuckles	No. of mounting holes	Weight g
<b>S0700.AC0005</b>	51	7.5	36	1.3	39.0	-	7.0	6.2	4.2	3	4	27.4
<b>S0700.AC0006</b>	64	7.0	25	1.3	42.5	6.0	8.0	6.2	5.0	5	6	36.5
<b>S0700.AC0007</b>	76	9.0	29	1.5	50.0	7.0	9.0	7.4	5.2	5	6	59.5
<b>S0700.AC0008</b>	89	10.5	34	1.7	56.5	7.5	10.5	9.0	5.4	5	6	91.6
<b>S0700.AC0010</b>	102	9.0	28	1.8	70.0	9.0	14.0	9.5	6.0	5	8	132.5
<b>S0700.AC0012</b>	127	11.0	35	1.9	82.0	10.5	16.0	11.5	6.0	5	8	231.5

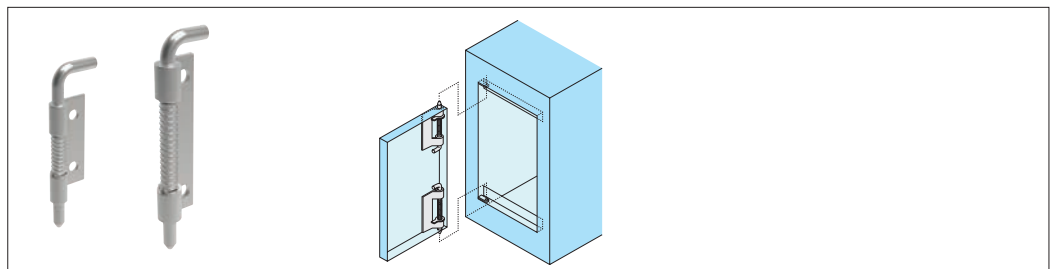


## Concealed hinges

For added security or a sleek enclosure design, concealed hinges offer the solution with mounting discreetly hidden away from view to avoid tampering.



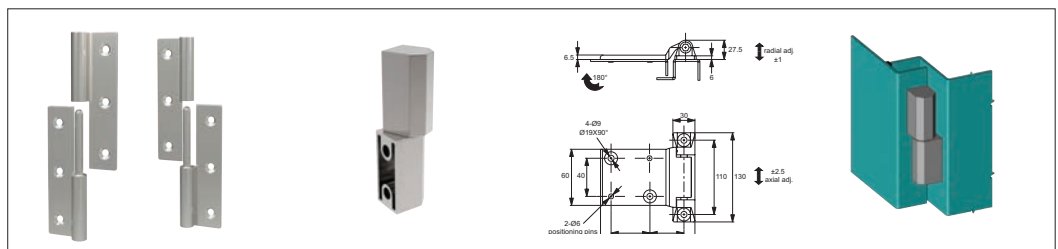
Concealed pivot hinges



End mount concealed pivot hinges

## Door removal hinges

Door removal or lift-off hinges simplify removal of covers and panels to ease access for maintenance and repair, available in a selection of materials.



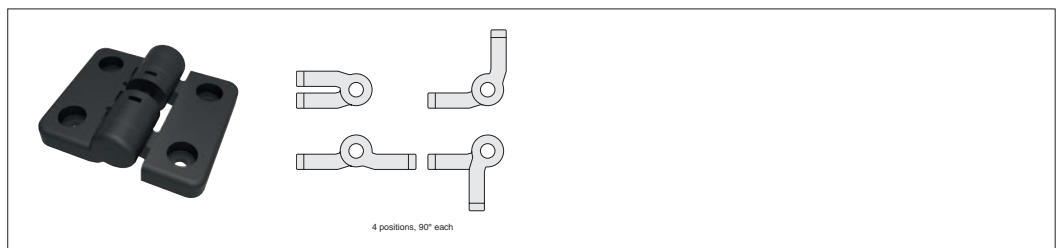
Lift off hinges

## Torque and positioning hinges

Torque and positioning hinges offer positive location of panels, screens and displays using constant friction for a firm hold.



Constant torque hinges



Detent positioning hinges



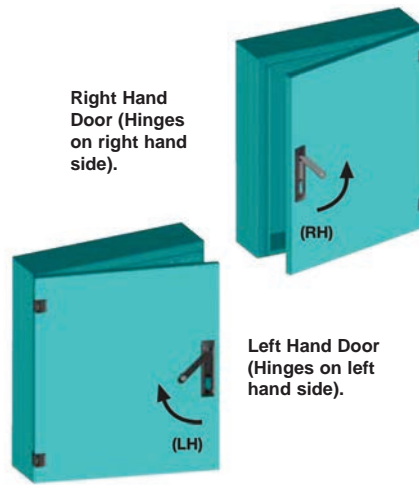
Wixroyd have a diverse range of hinges to suit most industrial applications in a wide range of materials and finishes.

Throughout our catalogue we refer to parts as being of a "Left" or "Right" type or hand. Which type you need, is most easily explained as follows;

Oriente your application so that when opened the door/panel comes towards you. With this orientation in mind, look to see on which side of the door/panel the hinges are mounted?

If the hinges are on the left side of the door/panel then you require "Left" type products. If the hinges are on the right side of the door/panel then you require "Right" type products.

The illustration on the right clearly indicates the layout and orientation of the door where a "left" or "right" product is used.



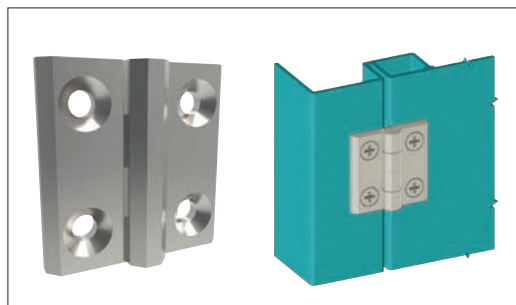
**Left or right type:  
Which do you need?**

HINGES

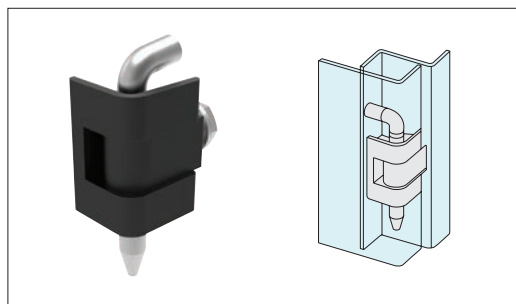
## Hinges

External or surface mount hinges have a wide range of application on electrical panels, sheet metal enclosures, generators and heating and venting applications.

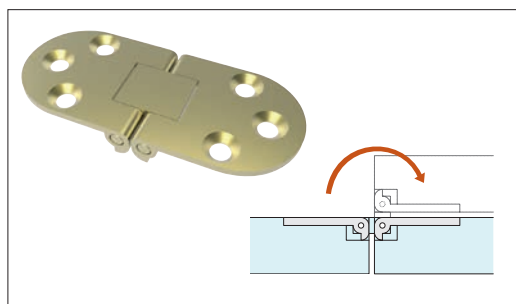
## External hinges



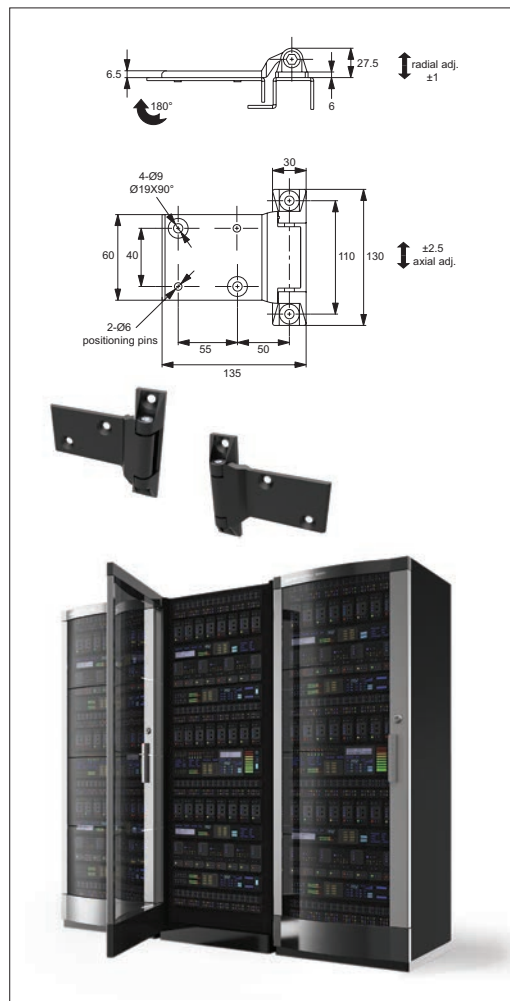
Surface mount hinges



Corner hinges



Flush mount hinges



Surface mount hinges

ov-WS0050-A-T-WS2300-A-TH1200-wide-range-of-solutions-b-rnh - Updated - 01-11-2022