

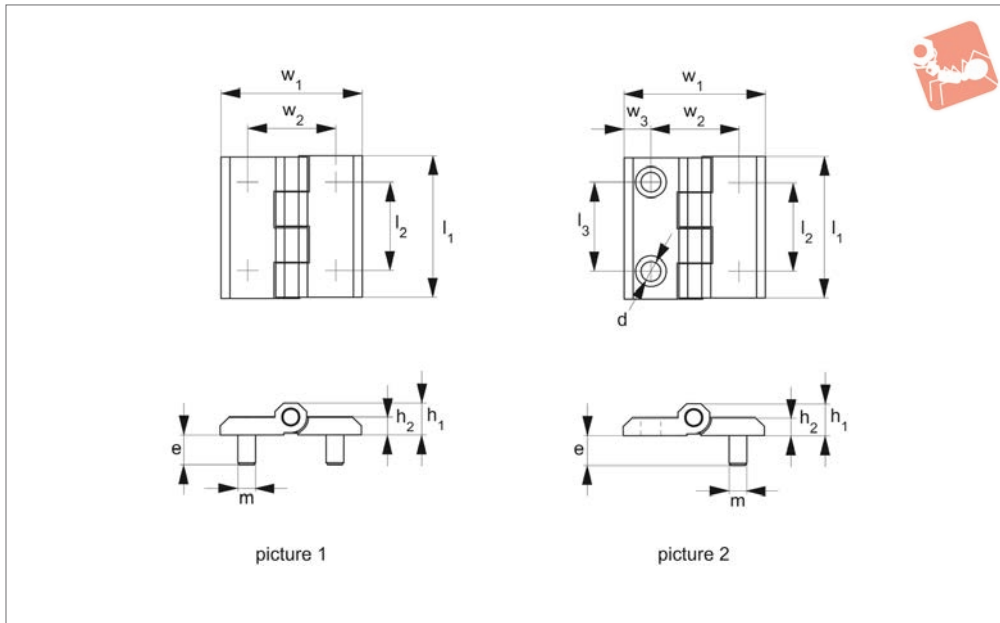


# Surface Mount - Leaf Hinges

integrated stud mount - plastic



## Hinges



**S1120**

HINGES

### Material

Body: polyamide, DIN-EN ISO 1043-1 PA 6 GFR 30. Black.

Pin: stainless steel, AISI 304.

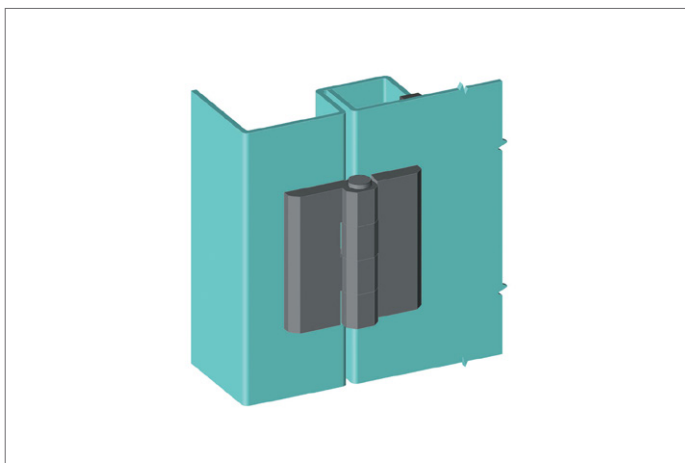
### Technical Notes

For plain/flush mounted doors, as well as

electrical panels and covers.

Max. opening angle 270°.

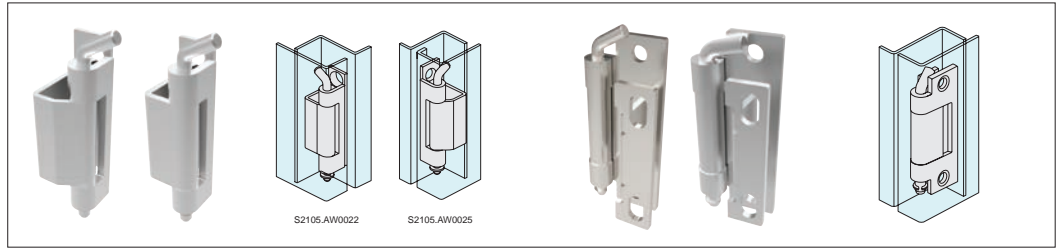
| Order No.           | Type  | Finish  | Size    | Picture | e    | h <sub>1</sub> | h <sub>2</sub> | l <sub>1</sub> | l <sub>2</sub> | l <sub>3</sub> | m   | w <sub>1</sub> | w <sub>2</sub> | w <sub>3</sub> | d   | Mounting     |
|---------------------|-------|---------|---------|---------|------|----------------|----------------|----------------|----------------|----------------|-----|----------------|----------------|----------------|-----|--------------|
| <b>S1120.AW0050</b> | Equal | Plastic | 50 x 50 | 1       | 12.0 | 11             | 6              | 50             | 30             | -              | M 6 | 50             | 30             | -              | 6.3 | Rear - Rear  |
| <b>S1120.AW0040</b> | Equal | Plastic | 40 x 40 | 1       | 8.5  | 9              | 5              | 40             | 25             | -              | M 5 | 40             | 25             | -              | 5.3 | Rear - Rear  |
| <b>S1120.AW0150</b> | Equal | Plastic | 50 x 50 | 2       | 12.0 | 11             | 6              | 50             | 30             | 30             | M 6 | 50             | 30             | 10             | 6.3 | Rear - Front |



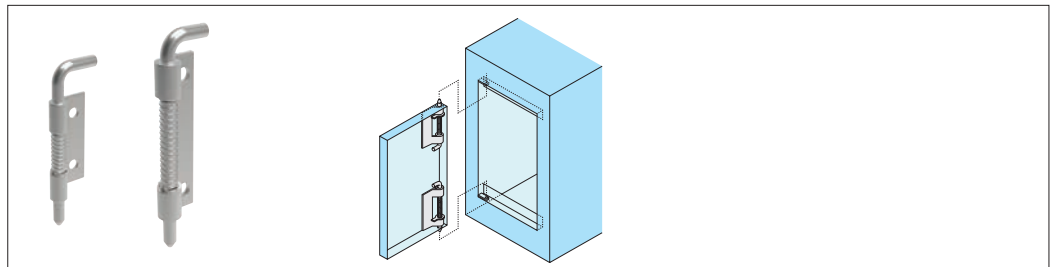


## Concealed hinges

For added security or a sleek enclosure design, concealed hinges offer the solution with mounting discreetly hidden away from view to avoid tampering.



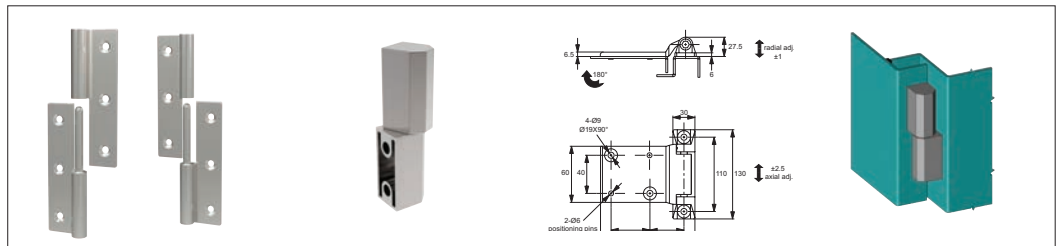
Concealed pivot hinges



End mount concealed pivot hinges

## Door removal hinges

Door removal or lift-off hinges simplify removal of covers and panels to ease access for maintenance and repair, available in a selection of materials.



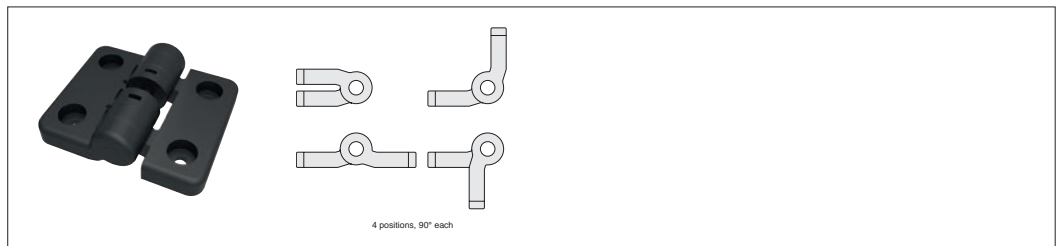
Lift off hinges

## Torque and positioning hinges

Torque and positioning hinges offer positive location of panels, screens and displays using constant friction for a firm hold.



Constant torque hinges



Detent positioning hinges



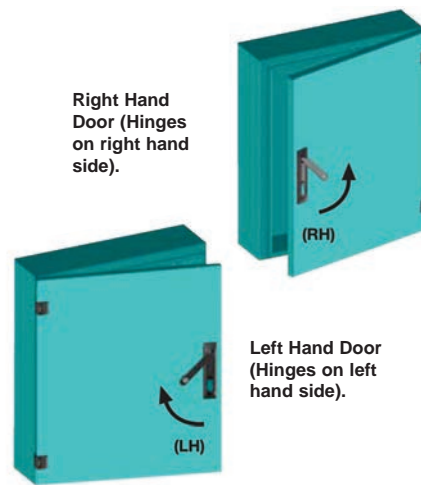
Wixroyd have a diverse range of hinges to suit most industrial applications in a wide range of materials and finishes.

Throughout our catalogue we refer to parts as being of a "Left" or "Right" type or hand. Which type you need, is most easily explained as follows;

Oriente your application so that when opened the door/panel comes towards you. With this orientation in mind, look to see on which side of the door/panel the hinges are mounted?

If the hinges are on the left side of the door/panel then you require "Left" type products. If the hinges are on the right side of the door/panel then you require "Right" type products.

The illustration on the right clearly indicates the layout and orientation of the door where a "left" or "right" product is used.

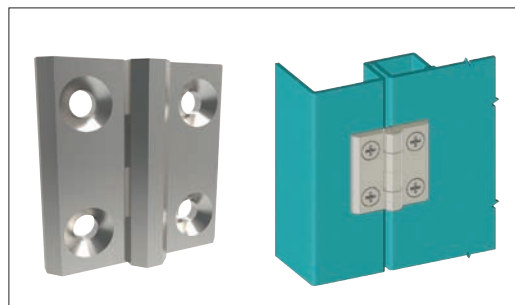


**Left or right type:  
Which do you need?**

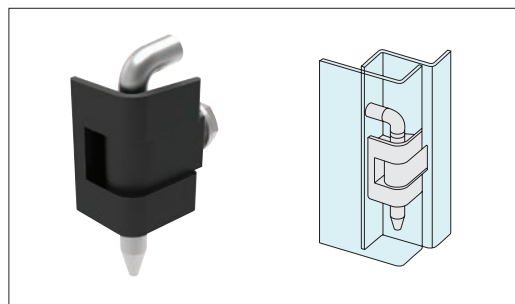
## Hinges

External or surface mount hinges have a wide range of application on electrical panels, sheet metal enclosures, generators and heating and venting applications.

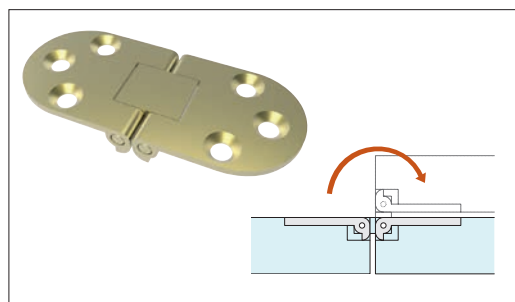
## External hinges



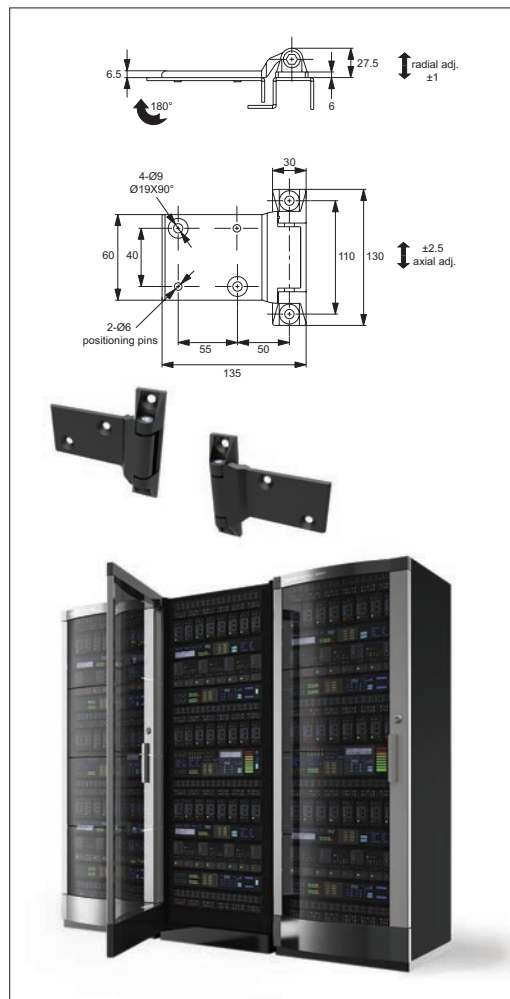
**Surface mount hinges**



**Corner hinges**



**Flush mount hinges**



**Surface mount hinges**