

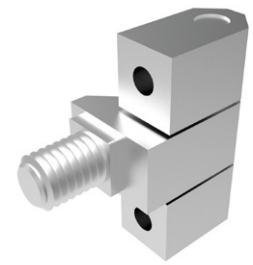
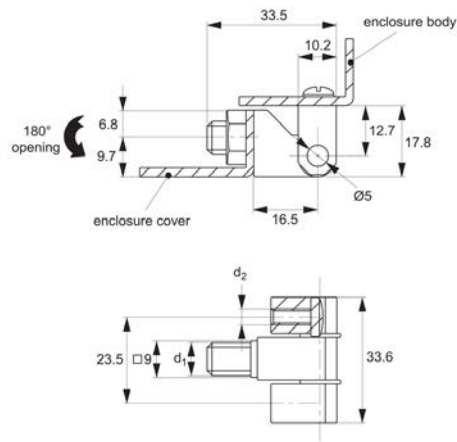


# Surface Mount - In-line Hinges

intergrated stud and screw mount - zinc



Hinges



**S1172**

HINGES

## Material

Hinge: die cast zinc.  
Pin: steel.

angle 180°.

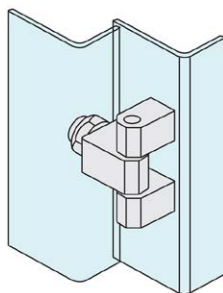
## Tips

Parts supplied tightly fitted.

## Technical Notes

For electrical panels and covers. Opening

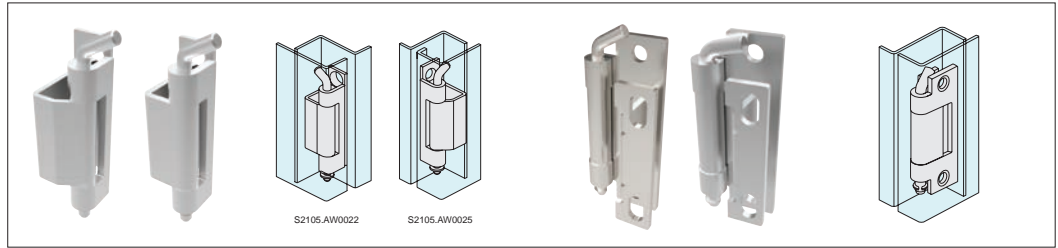
Order No.	Finish	Size	F <sub>x</sub> kN	F <sub>y</sub> kN	d <sub>1</sub>	d <sub>2</sub>	Opening angle °
<b>S1172.AW0010</b>	Chrome	33 x 21	1.2	1.0	M 8	M 4	180°
<b>S1172.AW0020</b>	Black Coated	33 x 21	1.2	1.0	M 8	M 4	180°



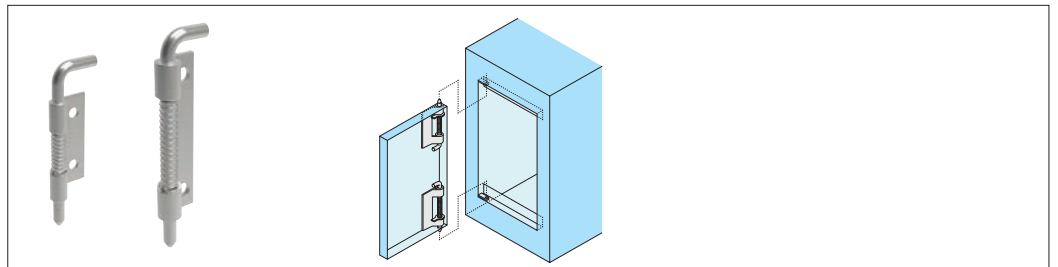


## Concealed hinges

For added security or a sleek enclosure design, concealed hinges offer the solution with mounting discreetly hidden away from view to avoid tampering.



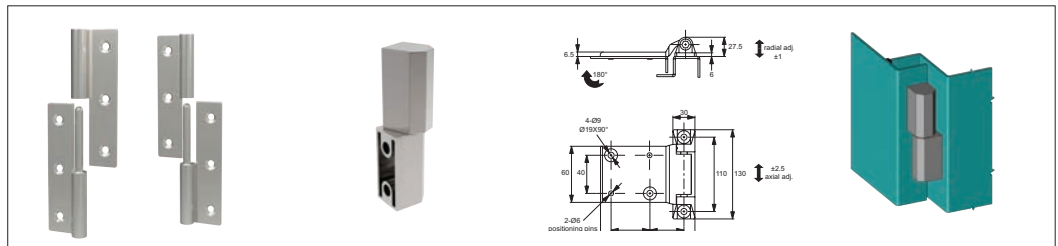
Concealed pivot hinges



End mount concealed pivot hinges

## Door removal hinges

Door removal or lift-off hinges simplify removal of covers and panels to ease access for maintenance and repair, available in a selection of materials.



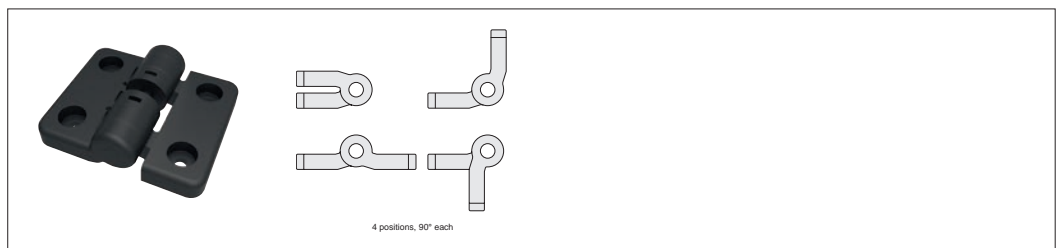
Lift off hinges

## Torque and positioning hinges

Torque and positioning hinges offer positive location of panels, screens and displays using constant friction for a firm hold.



Constant torque hinges



Detent positioning hinges



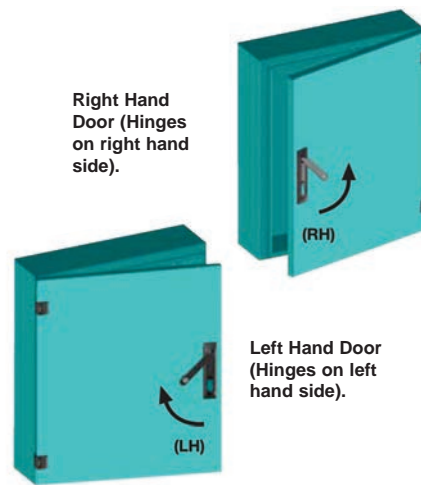
Wixroyd have a diverse range of hinges to suit most industrial applications in a wide range of materials and finishes.

Throughout our catalogue we refer to parts as being of a "Left" or "Right" type or hand. Which type you need, is most easily explained as follows;

Oriente your application so that when opened the door/panel comes towards you. With this orientation in mind, look to see on which side of the door/panel the hinges are mounted?

If the hinges are on the left side of the door/panel then you require "Left" type products. If the hinges are on the right side of the door/panel then you require "Right" type products.

The illustration on the right clearly indicates the layout and orientation of the door where a "left" or "right" product is used.

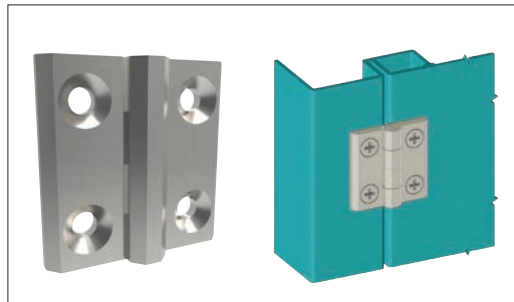


**Left or right type:  
Which do you need?**

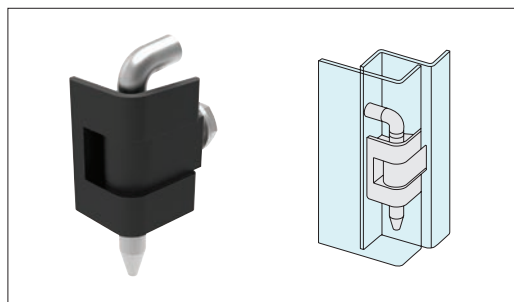
## Hinges

External or surface mount hinges have a wide range of application on electrical panels, sheet metal enclosures, generators and heating and venting applications.

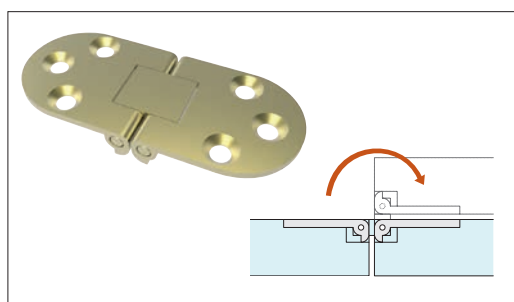
## External hinges



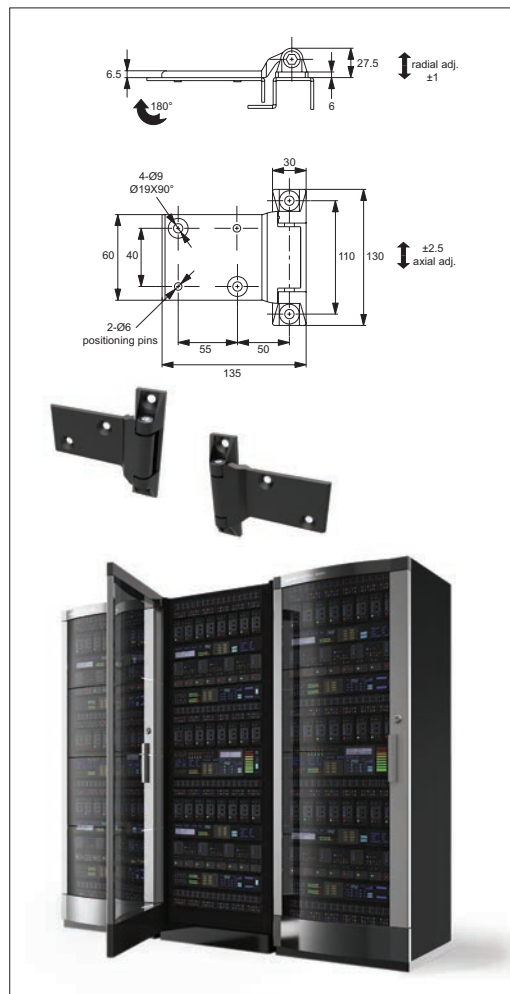
**Surface mount hinges**



**Corner hinges**



**Flush mount hinges**



**Surface mount hinges**