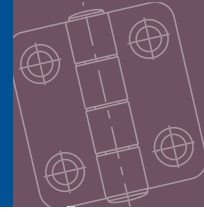
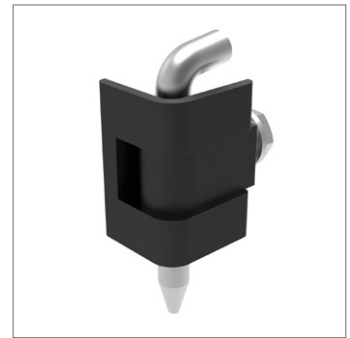
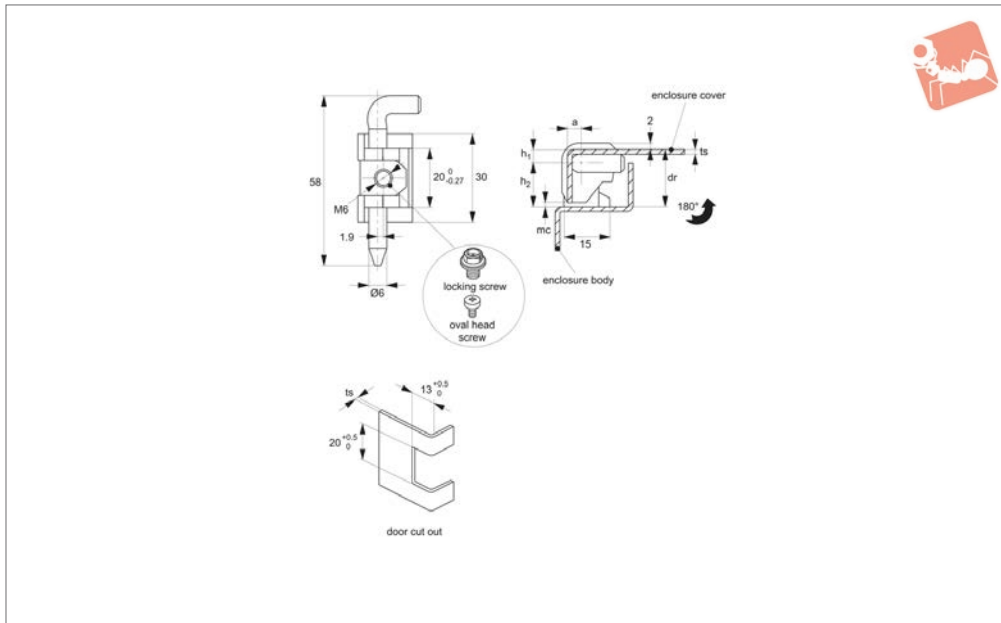




Corner Hinge - 19-24mm Door Return cut out and locking screw - zinc



Hinges



S1901

HINGES

Material

Hinge: die cast zinc, black powder coated.
Pin: steel, nickel plated.

Technical Notes

Opening angle 180°. For sheet metal and machine enclosures with 19-24mm door

return and panel thickness 1,5 to 2,0mm.
See installation cut out for details.

Tips

Mounting via M6 locking screw locking screw (not supplied).

Important Notes

dr= Maximum door return suitable for use with hinge.

mc= Minimum clearance advised between enclosure cover and body to ensure smooth, full opening of enclosure cover.

Order No.	Finish	Door return	h_1	h_2	F_x N	F_y N	mc min.	ts panel thickness
S1901.AW0015	Black Coated	19.6	4.6	15	940	720	2	1.5
S1901.AW0017	Black Coated	21.6	4.6	17	940	720	2	1.5
S1901.AW0019	Black Coated	23.6	4.6	19	940	720	2	1.5
S1901.AW0025	Black Coated	21.1	5.1	15	425	225	2	2.0
S1901.AW0027	Black Coated	22.1	5.1	17	425	225	2	2.0
S1901.AW0029	Black Coated	24.1	5.1	19	425	225	2	2.0
S1901.AW0999	Oval Head Screw	-	-	-	-	-	-	-

