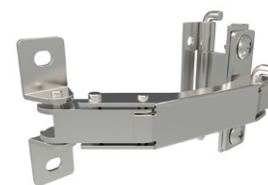
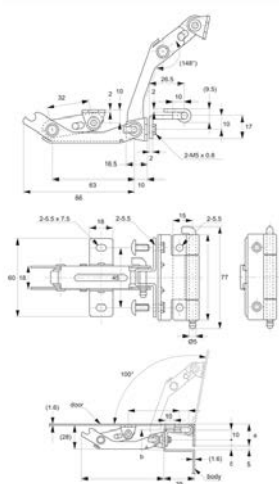




screw mount - stainless steel

Hinges



S2250

HINGES

Material

Stainless steel, AISI 304.

removal of machine/equipment covers for maintenance.

machine cover and body to be fully sealed to prohibit tampering or interference.

Technical Notes

Combined hinge and stay easily installed/
removed via installation pin. Ideal for

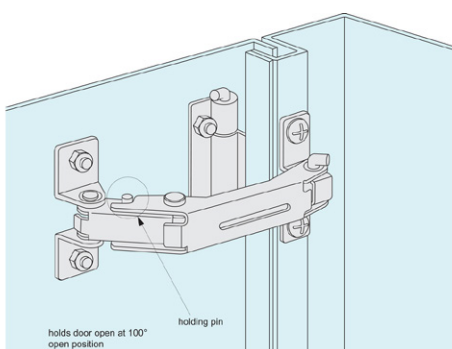
Tips

Particularly suited to gaming industry.
Nature of hinges movement enables

Important Notes

Suitable for doors up to 10Kg (as pair).
Holding force: 30kgf/cm each.

| Order No. | Type | Weight g |
|--------------|-----------------|-------------|
| S2250.AC0010 | Stainless Steel | 190 |

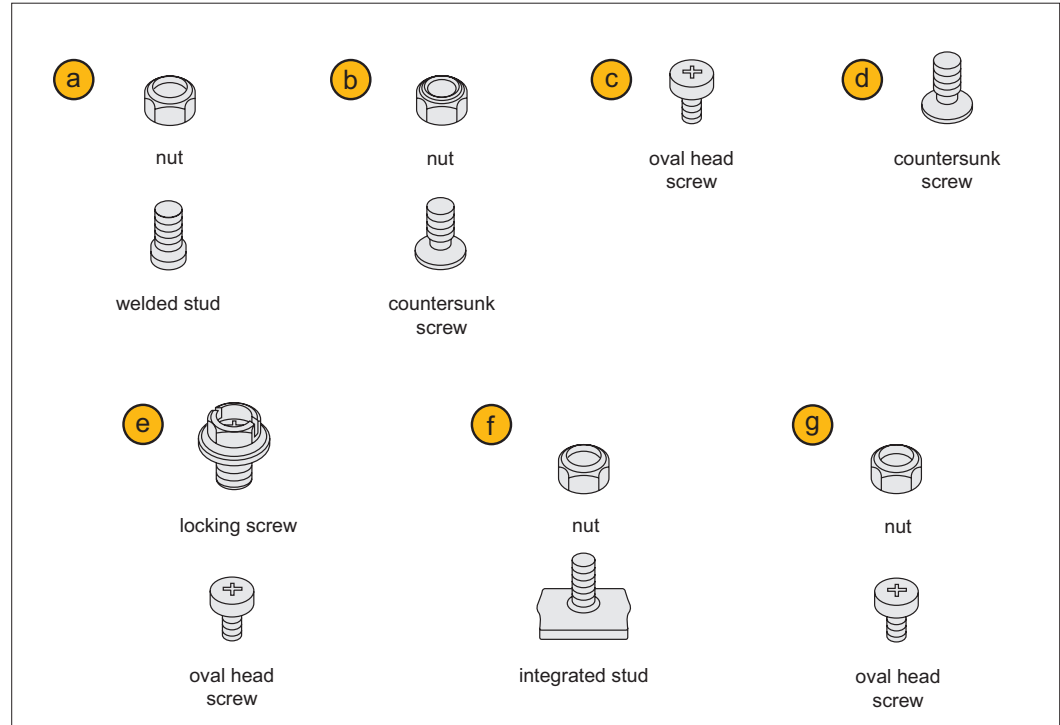




A variety of mounting methods are available!

Mounting combinations

Wixroyd concealed hinges can be mounted in a variety of ways using additional nuts and bolts.



Important Note: Refer to individual product pages for suitable mounting options. If you have any problems please contact our Technical Sales Team.

Mounting example

In the example, mounting option ②, a nut with a countersunk screw, is used to mount the hinge onto the enclosure body.

