

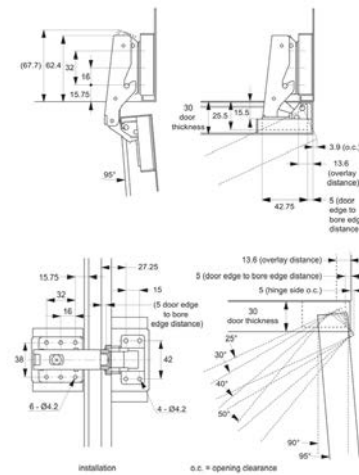


Recessed Fitting - Snap-On Easy

screw mount - steel



Hinges



S2260

HINGES

Material

Steel, nickel plated.

Technical Notes

Snap-on feature allows easy installation and removal of door panel, especially suitable for maintenance. Max. opening

angle 95°.

Tips

Hinge enables opening of doors without interference with side panels and hence ideal where two doors are mounted close together.

Important Notes

When correctly installed hinges require only a 3.9mm opening clearance between units.

Order No.	Type	Weight g
S2260.AC0010	Hinge	138
S2260.AC0050	Mounting Plate	81

Mounting combinations

a nut

b nut

c oval head screw

d countersunk screw

e welded stud

f countersunk screw

g locking screw

h nut

i oval head screw

j integrated stud

[illegible]