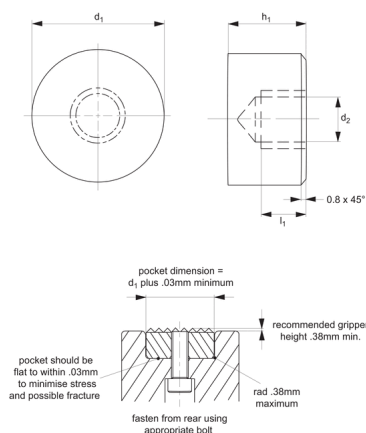




Rest Pads - Steel and Thermoplastic

round - rear fixing

Grippers & Rest Pads



35980

GRIPPERS & REST PADS

Material

Steel (AISI 8620), hardened to HRC 58-60, black oxide finish.
Thermoplastic, white.

etc in jigs and fixtures.

$h_1 = \text{tol. of steel } \pm 0,03, \text{ tol., for thermo-plastic } +0,00 -0,13.$

differential screw. Note installation recommendations in technical diagram.

Technical Notes

Can be used as rest pads, stops, supports

Tips

Can be fastened from rear using appropriate bolt or alternatively via use of a

Order No.	Material	d_1 +0.00 -0.13	d_2	h_1	l_1
35980.W0011	Steel	8	M 4x0,7	10	5.0
35980.W0012	Steel	8	M 4x0,7	12	6.4
35980.W0001	Steel	10	M 5x0,8	10	5.0
35980.W0002	Steel	10	M 5x0,8	12	6.4
35980.W0003	Steel	12	M 5x0,8	10	5.0
35980.W0004	Steel	12	M 5x0,8	12	6.4
35980.W0005	Steel	16	M 6x1,0	10	5.0
35980.W0006	Steel	16	M 6x1,0	12	6.4
35980.W0007	Steel	20	M 6x1,0	10	5.0
35980.W0008	Steel	20	M 6x1,0	12	6.4
35980.W0009	Steel	25	M 6x1,0	10	5.0
35980.W0010	Steel	25	M 6x1,0	12	6.4
35980.W0211	Plastic	8	M 4x0,7	10	5.0
35980.W0212	Plastic	8	M 4x0,7	12	6.4
35980.W0201	Plastic	10	M 5x0,8	10	5.0
35980.W0202	Plastic	10	M 5x0,8	12	6.4
35980.W0203	Plastic	12	M 5x0,8	10	5.0
35980.W0204	Plastic	12	M 5x0,8	12	6.4
35980.W0205	Plastic	16	M 6x1,0	10	5.0
35980.W0206	Plastic	16	M 6x1,0	12	6.4
35980.W0207	Plastic	20	M 6x1,0	10	5.0
35980.W0208	Plastic	20	M 6x1,0	12	6.4
35980.W0209	Plastic	25	M 6x1,0	10	5.0
35980.W0210	Plastic	25	M 6x1,0	12	6.4



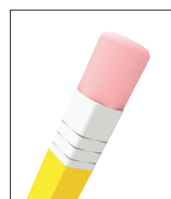
A Range of Specialist Gripping Pads to Suit Your Application

Urethane Coated



Unique urethane coat prevents marking of delicate components during machining or manipulation by robots. The urethane pad is permanently bonded to the stainless steel body of the gripping pad. With a bubbled texture, air is able to escape and hence avoid any suction action - enabling easy releasing of parts.

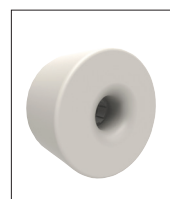
These are available in three different urethane durometers.



35 durometer:
Pencil rubber top

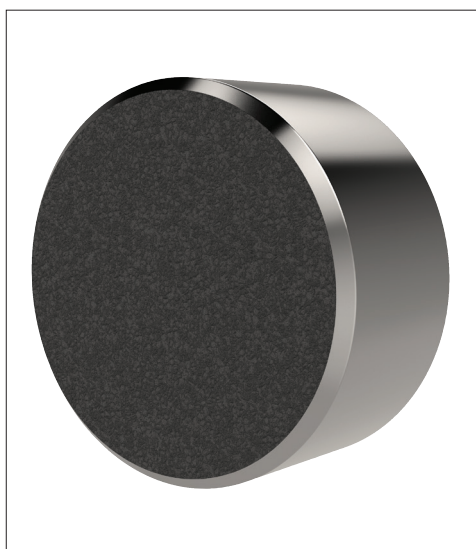


60 durometer:
Car tyre



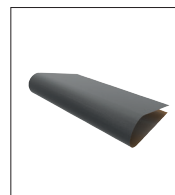
80 durometer:
Skateboard wheel

Abrasive Diamond Coated



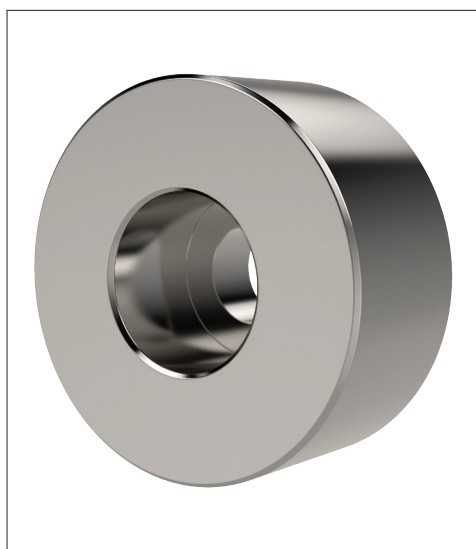
To improve handling of smooth or slippery components, with a minimum of clamping pressure, our abrasive diamond coated pads provide an excellent solution.

Diamond powders are permanently fused to a 17-4 stainless pad, to provide an abrasive surface comparable to 100 grit value.



**Sandpaper of 100
grit texture**

Stainless Pads

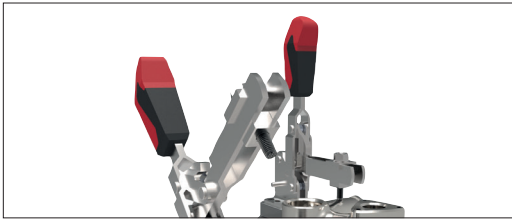


Pads of 17-4 Stainless, hardened to RC 43/46 provide solutions to applications where material selection is of greater importance; for example nuclear or food processing or pharmaceutical applications.

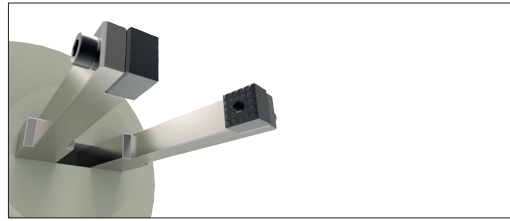


Carbide & Hardened Steel Grippers & Inserts

35300 - 35980
Positioning Elements

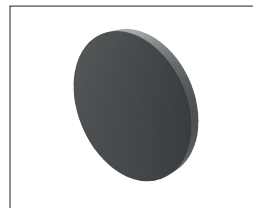


Grippers enhance workholding for multiple machining operations.



Grippers increase handling capability.

Pads and Gripper Options



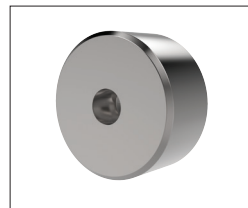
Solid Carbide

High impact carbide pads, can be brazed or bonded into place.



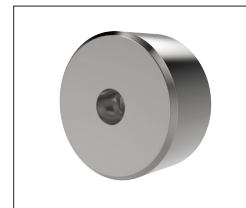
Carbide Tipped

Constructed with high impact carbide pad brazed to a heat treated alloy steel body. Mount via tapped hole or a flat on the outside diameter for set screw mounting.



Hardened Steel

Made from 8620 steel, carburized and hardened to Rc 58/60 1.2mm with black oxide finish. Mount via tapped or counter bored hole.



Non-marking Thermoplast

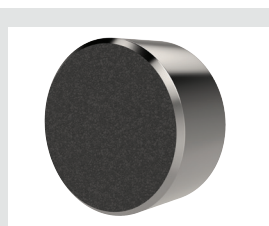
Made from white thermoplast. Mount via tapped or counter bored hole.

Pads



Stainless Steel

Pad from 17-4 stainless steel, hardened to Rc 43/46. Mount via tapped or counter bored hole.



Abrasive Diamond Surface

Abrasive surface permanently fused to a 17-4 stainless steel pad, hardened to Rc 43/46. The surface texture is comparable to a 100 grit abrasive. Mount via tapped or counter bored hole.



Soft Urethane Surface

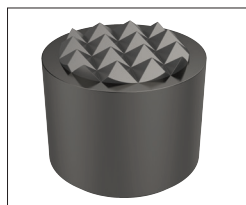
Urethane surface is permanently bonded to a 300 series stainless steel pad. The urethane provides excellent protection against damage on delicate work surfaces. Tapped hole mounting.

see our website for our full range:
wixroyd.com



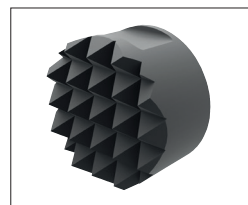
High Speed Tool Steel

Manufactured from M-2 high speed tool steel, hardened to Rc 60/62 with black oxide finish. Mount via tapped hole, counter bored hole or a flat on the outside diameter for set screw mounting.



Carbide Tipped

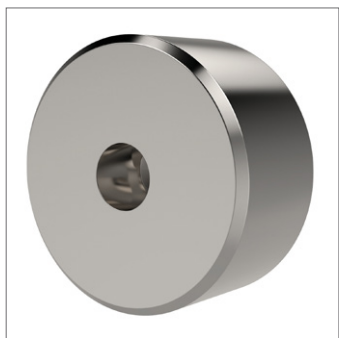
Constructed with high impact carbide pad brazed to a heat treated alloy steel body. Mounts via tapped hole or a flat on the outside diameter for set screw mounting.



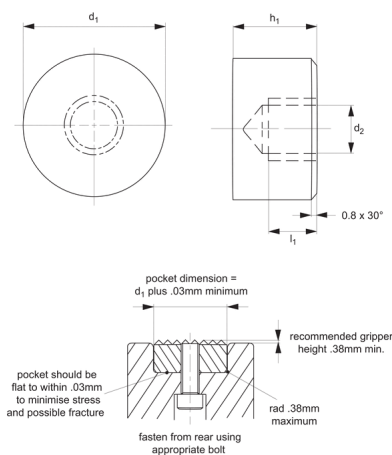
Solid Carbide

Manufactured from high impact carbide in a solid gripper pad or as a solid gripper body with a threaded brazed-in steel insert. Mount via tapped hole or a flat on the outside diameter for set screw mounting.

Grippers



35982



Material

Stainless steel (AISI 630), hardened to HRC 43-46.

Technical Notes

Can be used as rest pads, stops, supports

etc in jigs and fixtures.

Tips

Can be fastened from rear using appropriate bolt, or alternatively via use of a differential screw. Note installation recom-

mendations in technical diagram.

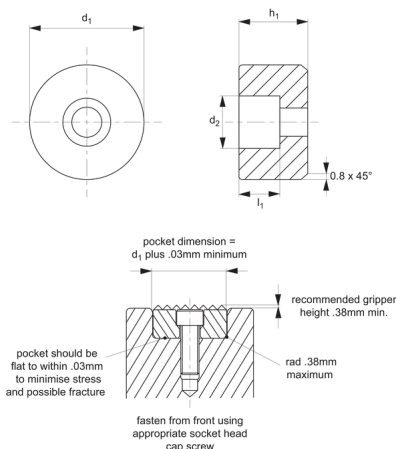
Order No.	d_1 +0.00 -0.13	d_2	h_1 ± 0.03	l_1
35982.W0080	8	M 4x0,7	10	5.0
35982.W0082	8	M 4x0,7	12	6.4
35982.W0100	10	M 5x0,8	10	5.0
35982.W0102	10	M 5x0,8	12	6.4
35982.W0120	12	M 5x0,8	10	5.0
35982.W0122	12	M 5x0,8	12	6.4
35982.W0160	16	M 6x1,0	10	5.0
35982.W0162	16	M 6x1,0	12	6.4
35982.W0200	20	M 6x1,0	10	5.0
35982.W0202	20	M 6x1,0	12	6.4
35982.W0250	25	M 6x1,0	10	5.0
35982.W0252	25	M 6x1,0	12	6.4



Rest Pads - Steel and Thermoplastic

round - front fixing

Grippers & Rest Pads



35984

GRIPPERS & REST PADS

Material

Steel (AISI 8620), hardened to HRc 58-60.
Black oxide finish.
Thermoplastic, white.

etc in jigs and fixtures.

h_1 = tol. of steel ± 0.03 , tol. of thermoplastic $+0.00 -0.13$.

mendations in technical diagram.

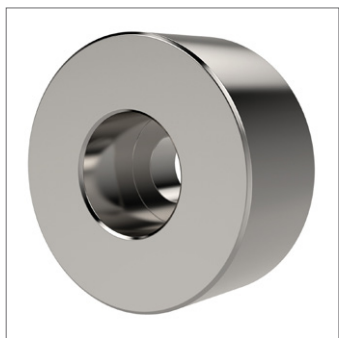
Technical Notes

Can be used as rest pads, stops, supports

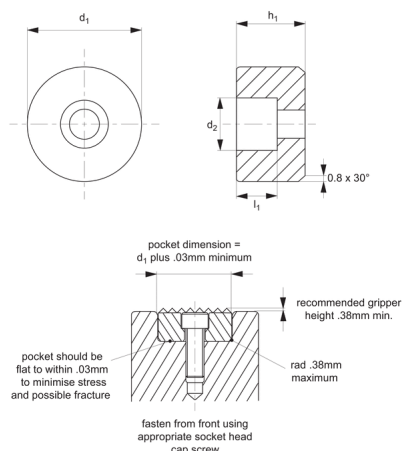
Tips

Fasten from front using appropriate socket head cap screw. Note installation recom-

Order No.	Material	d_1 +0.00 -0.13	d_2 to fit DIN 912	h_1	l_1
35984.W0100	Steel	10	M 3	10	5.0
35984.W0102	Steel	10	M 3	12	5.0
35984.W0120	Steel	12	M 4	10	5.6
35984.W0122	Steel	12	M 4	12	5.6
35984.W0160	Steel	16	M 5	10	6.6
35984.W0162	Steel	16	M 5	12	6.6
35984.W0200	Steel	20	M 6	10	7.6
35984.W0202	Steel	20	M 6	12	7.6
35984.W0250	Steel	25	M 6	10	7.6
35984.W0252	Steel	25	M 6	12	7.6
35984.W1100	Plastic	10	M 3	10	5.0
35984.W1102	Plastic	10	M 3	12	5.0
35984.W1120	Plastic	12	M 4	10	5.6
35984.W1122	Plastic	12	M 4	12	5.6
35984.W1160	Plastic	16	M 5	10	6.6
35984.W1162	Plastic	16	M 5	12	6.6
35984.W1200	Plastic	20	M 6	10	7.6
35984.W1202	Plastic	20	M 6	12	7.6
35984.W1250	Plastic	25	M 6	10	7.6
35984.W1252	Plastic	25	M 6	12	7.6



35986



Material

Stainless steel (AISI 630), hardened to RHc 43-46.

well as protection against chemical and environmental corrosion.

recommendations in technical diagram.

Technical Notes

Stainless steel provides high strength as

Tips

Counterbored hole for front mounting with a socket head cap screw. Note installation

Order No.	d_1 +0.00 -0.13	d_2 to fit DIN 912	h_1 ± 0.03	l_1
35986.W0100	10	M 3	10	5.0
35986.W0102	10	M 3	12	5.0
35986.W0120	12	M 4	10	5.6
35986.W0122	12	M 4	12	5.6
35986.W0160	16	M 5	10	6.6
35986.W0162	16	M 5	12	6.6
35986.W0200	20	M 6	10	7.6
35986.W0202	20	M 6	12	7.6
35986.W0250	25	M 6	10	7.6
35986.W0252	25	M 6	12	7.6