

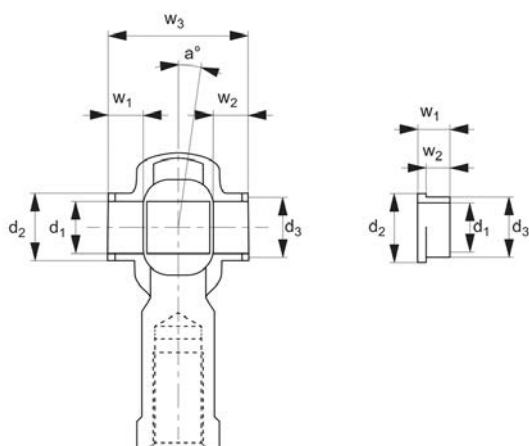


Rubber Protector Cap

Rod Ends



ROD ENDS



65970

Material

Rubber

Technical Notes

Rubber protector caps for additional

protection of rod ends. For use with main-tenance free series K rod ends.

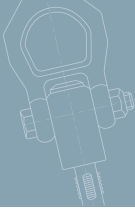
Brass spacer bush available on request.

Temperature range: -20°C to + 110°C.

Tips

Mounted easily with retaining pliers.

Order No.	Suitable for steel rod ends	Suitable for stainless steel rod ends	d ₁	d ₂	d ₃	w ₁	w ₂	w ₃	a°	Weight g
65970.W0006	R3550/R3551.006	R3565/R3566.006	6	11	8.7	6	4	21	13	3
65970.W0008	R3550/R3551.008	R3565/R3566.008	8	12	10.3	6	4	24	14	3
65970.W0010	R3550/R3551.010	R3565/R3566.010	10	14	12.5	6	4	26	14	5
65970.W0012	R3550/R3551.012	R3565/R3566.012	12	17	15.0	8	6	32	13	5
65970.W0014	R3550/R3551.014	R3565/R3566.014	14	19	16.8	8	6	35	16	7
65970.W0016	R3550/R3551.016	R3565/R3566.016	16	21	19.0	8	6	37	15	7
65970.W0018	R3550/R3551.018	R3565/R3566.018	18	25	21.8	8	6	39	15	7
65970.W0020	R3550/R3551.020	R3565/R3566.020	20	28	24.3	10	8	45	15	40
65970.W0022	R3550/R3551.022	R3565/R3566.022	22	29	25.7	10	8	48	15	40
65970.W0025	R3550/R3551.025	R3565/R3566.025	25	33	29.7	10	8	51	15	40

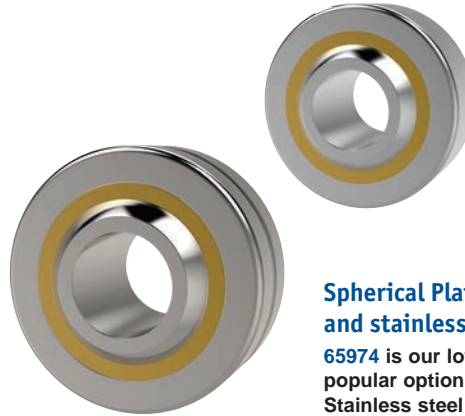


Parts overview



Heavy Duty Rod Ends: integral spherical plain bearings - series K and series E

Male and female rod ends, maintenance free. These are our most popular range of heavy duty rod ends. Bore diameters 5mm up to 30mm.



Spherical Plain Bearings: steel and stainless steel

65974 is our lowest cost, most popular option spherical bearing. Stainless steel version 65976 requires maintenance. 65974 is maintenance free. Bore diameters 5mm up to 30mm.



Heavy Duty Rod Ends: integral ball bearings - series K and series E

Male and female rod ends. Different bore sizes in relation to the thread size. All require maintenance. Bore diameters 6mm up to 30mm.

Stainless Steel Heavy Duty Rod Ends: integral spherical plain bearings

Male and female rod ends maintenance free.



Low Cost Rod Ends: with spherical plain bearing

These are our most popular male and female rod ends. Maintenance free. Female-bore diameters 5mm up to 12mm. Male-bore diameters 5mm up to 16mm.



Rod Ends with Studs

Steel and Stainless steel, male and female, maintenance free. Sizes M6 up to M16.

see our website for our full range:
wixroyd.com