

33170

BALL LOCK PINS & QUICK RELEASE PINS

Material

Pin: Stainless Steel 1.4305 (AISI 303)

Spring: Stainless Steel

Finish: Black or Natural

Technical Notes

Temperature range -50°C to +150°C.

For quick fastening and locking of frequently repeated connections; gun slings, tool holders etc, used in combination with sling swivel receivers no.33172.

Pressing = Unlocking

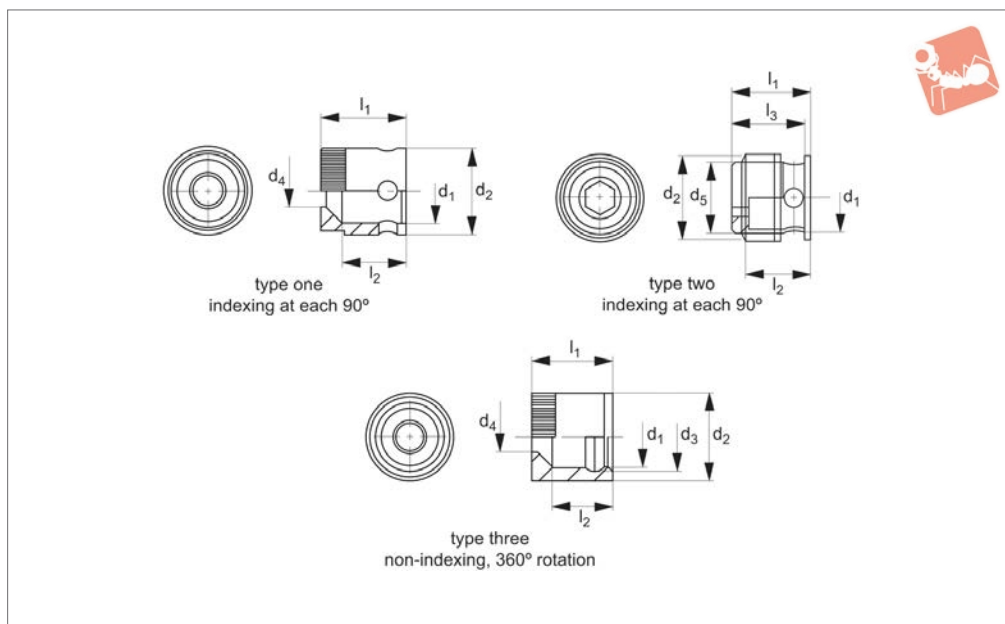
Releasing = Locking

Order No.	Finish	Nom. pin dia	$d_1 \pm 0.05$	w_1	d_2	d_3	d_4	l_1	l_2	l_3	l_4	Load capacity kN max.	Weight g
33170.W0010	Black	9.5	9.5	23	11.1	3.5	14	31.3	16.5	12.5	9	1.2	20
33170.W0020	Black	9.5	9.5	40	11.1	4.5	14	36.6	23.0	12.5	9	2.0	29
33170.W0110	Natural	9.5	9.5	23	11.1	3.5	14	31.3	16.5	12.5	9	1.2	20
33170.W0120	Natural	9.5	9.5	40	11.1	4.5	14	36.6	23.0	12.5	9	2.0	29





33172



Material

Pin: stainless steel 1.4305.

Spring: stainless steel.

Finish: Black or natural.

Technical Notes

Temperature range -50°C to +150°C.

Receivers for sling swivel pins part no.

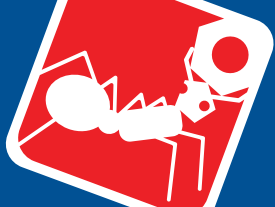
33170.

To achieve quick fastening and locking frequently repeated connections.

Type one and two: indexing at 90°.

Type three: non-indexing, 360° rotation.

Order No.	Dia. Ø nom.	Finish	For mounting in	Type	d ₁ tol. h9	d ₂ ±0.1	d ₃	d ₄	d ₅	l ₁	l ₂	l ₃	A/F	Weight g
33172.W0205	9.5	Black	Wood	One	9.6	12.65	-	4.9	-	12.65	9.65	-	-	5.6
33172.W0210	9.5	Black	Plastic	Two	9.6	12.65	-	-	10.7	12.10	9.20	11	5	3.0
33172.W0215	9.5	Black	Wood 360°	Three	9.6	13.50	11.3	4.9	-	12.65	9.65	-	-	6.5
33172.W0305	9.5	Natural	Wood	One	9.6	12.65	-	4.9	-	12.65	9.65	-	-	5.6
33172.W0310	9.5	Natural	Plastic	Two	9.6	12.65	-	-	10.7	12.10	9.20	11	5	3.0
33172.W0315	9.5	Natural	Wood 360°	Three	9.6	13.50	11.3	4.9	-	12.65	9.65	-	-	6.5



Wixroyd Ball Lock Pins

applications

33060 - 33250
Positioning Elements

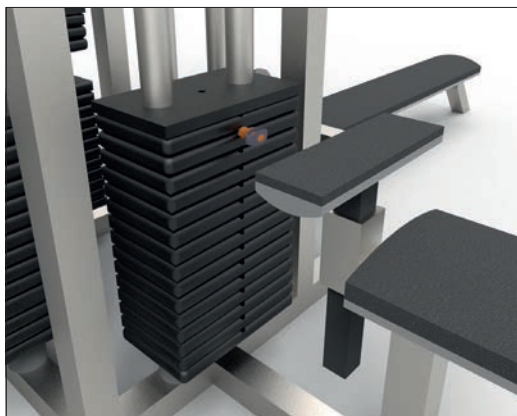


Sound Rigging Systems

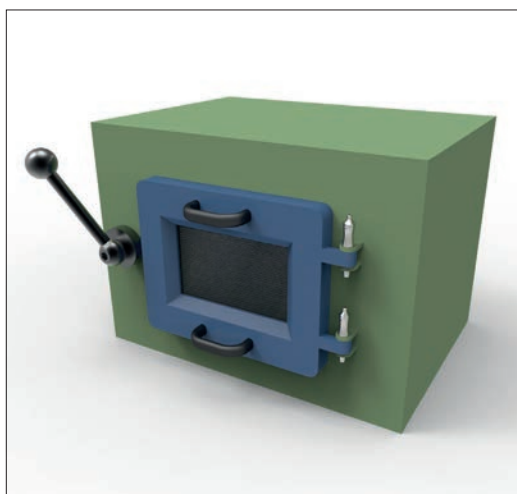
Ball lock pins on a sound rigging system. Offering secure fixing with high shear forces and easy fitting for operators at heights.

In addition full black powder coating of grip and actuation button eliminates glare from other stage lighting.

BALL LOCK PINS & QUICK RELEASE PINS



Gym Equipment



Scientific and Medical



Pin Material

1.4305 (AISI 303) - shear force approx.
60% of higher material version 1.4542

1.4542 (AISI 630) - identified by the ridge
on the pin

CRES 17-4PH (AMS 5643) aviation standard



Handle Style



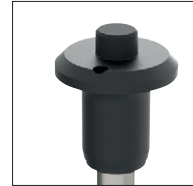
Plastic tri-star



T-handled, metal



L-handled, metal



Mushroom, metal

Single piece metal,
contouredSpecial plastic
self-springAdjustable grip
length, plastic

Key ring



Safety, metal

Mushroom Type
B aviationLanyards and
Locating BushesStainless wire -
(coated) -
2 x key ringStainless wire -
Key ring and
fixing loopPlastic -
2 x cable tieSteel wire -
(coated) -
2 x key ringStainless bead
chain -
2 x key ringLocating
bushes

Actuation

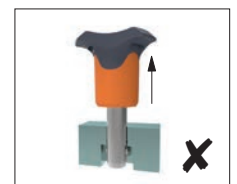
Press = unlock
Release = lock
(standard)Press = unlock and position
Release = lock and
simultaneous clampSimple spring loaded balls
"pullout pin"

Important Note

**Important Note: Ball lock pins are
not suited to lifting applications!**
For quick release lifting pins,
see part 33400.



Shear force



Lifting force

Special Variations

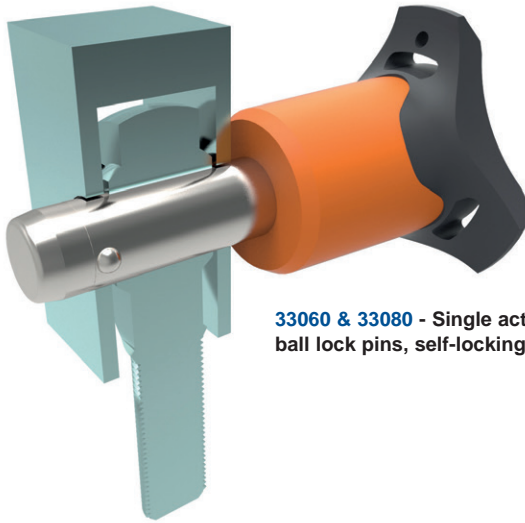


Variations on our standard designs
are possible, please contact our
sales team for technical assistance.
Quick production on specials can
be as little as 3 weeks.



Applications

- Positioning.
- Lifting.
- Locking.
- Indexing.
- Joining.



33060 & 33080 - Single acting ball lock pins, self-locking.



33194 - Single acting ball lock pins, self locking, simple finish.



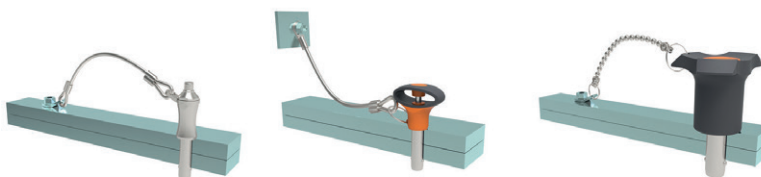
33140 - Socket pins, non-locking, spring loaded balls.



33100 - Single acting ball lock pin, self locking.



33180 - Clamping pins, with span compensation, self-locking.



33250 & 33270 - Lanyards.



33220 - Ball lock pins, single acting - L-handle