

32750

INDEX PLUNGER & PINS

Material

Stainless steel 1.4305 (AISI 303).

index plungers to enable different thread reaches. Order while stocks last.

Technical Notes

Distance collars adapt the thread length of

Order No.	d ₁ tol. H12	d ₂ -0.1	For index plungers size d ₁	Suitable for plunger type	l ₁ ±0.1	Weight g
32750.W0933	8	10	M 8	1	3	0.8
32750.W0934	8	10	M 8	1	4	0.9
32750.W0936	8	10	M 8	1	6	1.2
32750.W0938	8	10	M 8	1	8	1.6
32750.W0940	8	10	M 8	1	10	2.0
32750.W0942	10	12	M10	1/2/3	2	0.6
32750.W0944	10	12	M10	1/2/3	4	1.1
32750.W0946	10	12	M10	1/3	6	1.6
32750.W0948	10	12	M10	1/3	8	2.1
32750.W0950	10	12	M10	1/3	10	2.7
32750.W0952	10	12	M10	1/3	12	3.0
32750.W0962	12	14	M12	1	2	0.6
32750.W0964	12	14	M12	1	4	2.5
32750.W0966	12	14	M12	1	6	1.9
32750.W0968	12	14	M12	1	8	2.4
32750.W0972	12	17	M12	3/4	2	2.0
32750.W0974	12	17	M12	3/4	4	3.4
32750.W0975	12	17	M12	3/4	5	4.4
32750.W0976	16	17	M16	1	4	0.7
32750.W0977	16	17	M16	1	6	1.2
32750.W0978	16	17	M16	1	8	1.4
32750.W0979	16	17	M16	1	10	2.0
32750.W0980	16	17	M16	1	12	2.1
32750.W0982	16	19	M16	3/4	2	1.3
32750.W0984	16	19	M16	3/4	4	2.8
32750.W0986	16	19	M16	3/4	6	3.8
32750.W0988	16	19	M16	3/4	8	4.8
32750.W0990	16	19	M16	3	10	6.1
32750.W0992	16	19	M16	3	12	9.2
32750.W0993	20	22	M20	1/3	6	3.0
32750.W0994	20	22	M20	1/3	8	4.0
32750.W0995	20	22	M20	1/3	10	4.9
32750.W0996	20	22	M20	1/3	12	5.9
32750.W0997	20	22	M20	1/3	14	6.9



Order No.	d_1 tol. H12	d_2 -0.1	For index plungers size d_1	Suitable for plunger type	l_1 ± 0.1	Weight g
32750.W0998	20	22	M20	1/3	16	9.3
32750.W0999	20	22	M20	1/3	18	9.0

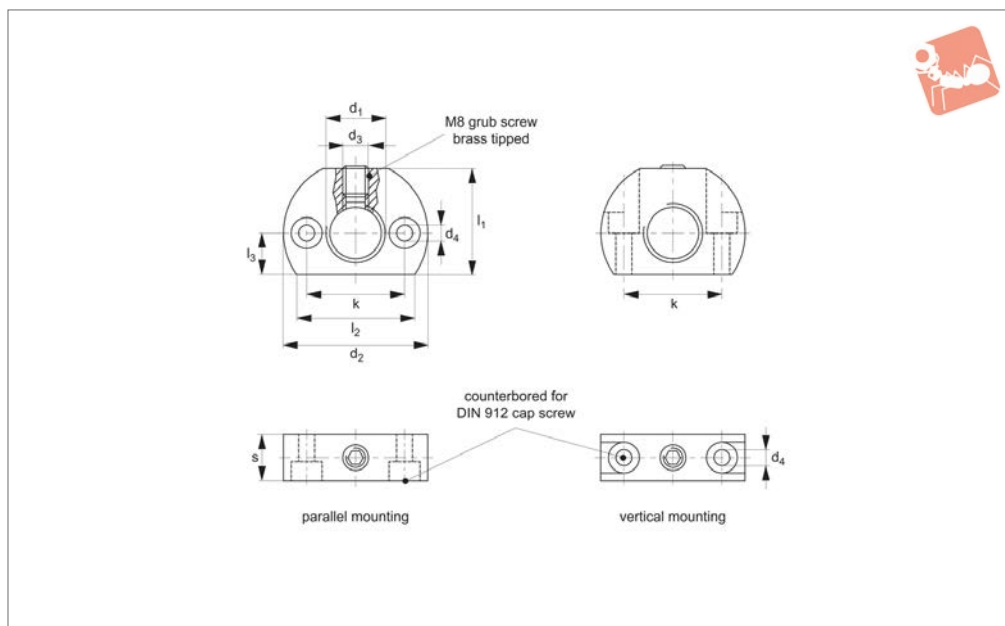
INDEX PLUNGER & PINS





Mounting Blocks for index plungers - fine thread

Index Plunger & Pins



32510

INDEX PLUNGER & PINS

Material

Steel type-

Body: Steel, blackened.

Grub Screw: M8 with brass tip.

Stainless steel type-

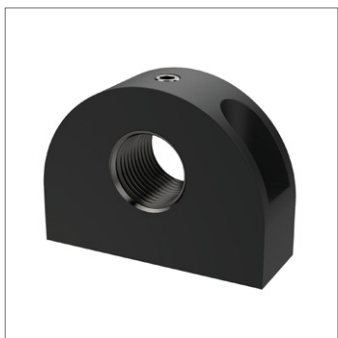
Body: Stainless steel 1.4305 (AISI 303).

Technical Notes

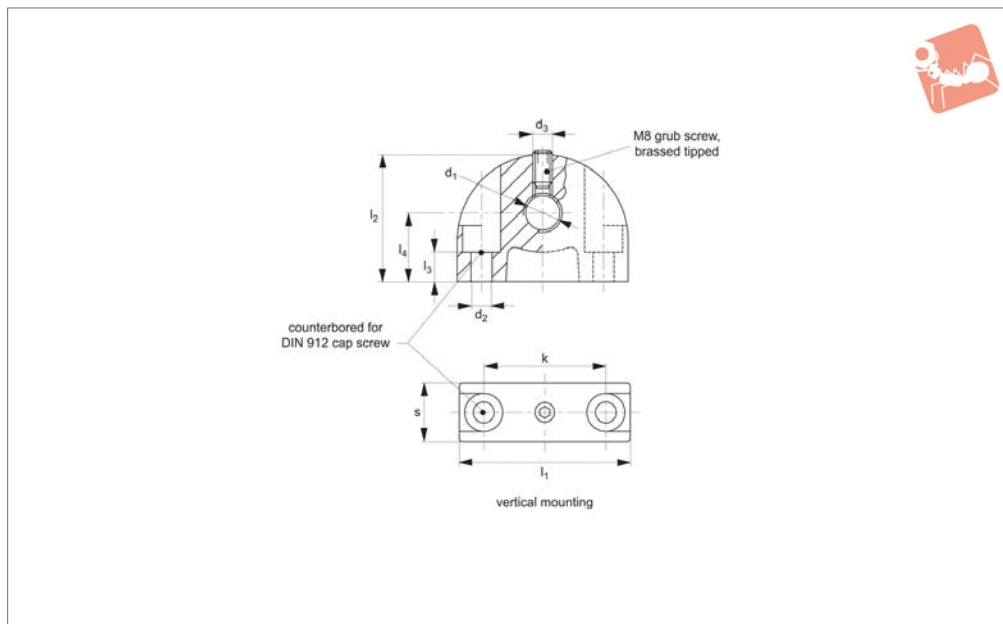
Mounting blocks provide assembly support for mounting of index plungers. **(Not**

suitable for index plungers with coarse thread).

Order No.	Material	Type	d ₁	d ₂	d ₃	d ₄	k ±0.1	l ₁	l ₂ ≈	l ₃	s	Weight g
32510.W0345	Steel	Parallel	M12x1,5	32	M 5	4.5	21	22	26.5	9	12	43
32510.W0346	Steel	Parallel	M16x1,5	46	M 8	5.5	32	33	38.0	13	15	122
32510.W0347	Steel	Vertical	M12x1,5	32	M 5	4.5	21	22	26.5	9	12	37
32510.W0348	Steel	Vertical	M16x1,5	46	M 8	5.5	32	33	38.0	13	15	106
32510.W0350	Steel	Parallel	M20x1,5	46	M 8	5.5	32	33	37.0	13	15	109
32510.W0352	Steel	Vertical	M20x1,5	46	M 8	5.5	32	33	38.0	13	15	94
32510.W0545	Stainless	Parallel	M12x1,5	32	M 5	4.5	21	22	26.5	9	12	43
32510.W0546	Stainless	Parallel	M16x1,5	46	M 8	5.5	32	33	38.0	13	15	122
32510.W0547	Stainless	Vertical	M12x1,5	32	M 5	4.5	21	22	26.5	9	12	37
32510.W0548	Stainless	Vertical	M16x1,5	46	M 8	5.5	32	33	38.0	13	15	106
32510.W0550	Stainless	Parallel	M20x1,5	46	M 8	5.5	32	33	37.0	13	15	109
32510.W0552	Stainless	Vertical	M20x1,5	46	M 8	5.5	32	33	38.0	13	15	94



32512



Material

Body: die-cast zinc, black plastic coated.
Grub screw: M8 with brass tip.

for mounting of index plungers. **(Not suitable for index plungers with coarse thread).**

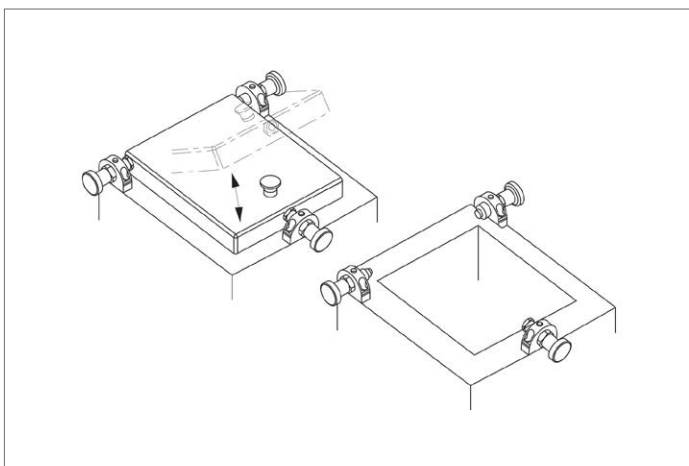
d_1 on countersunk side.

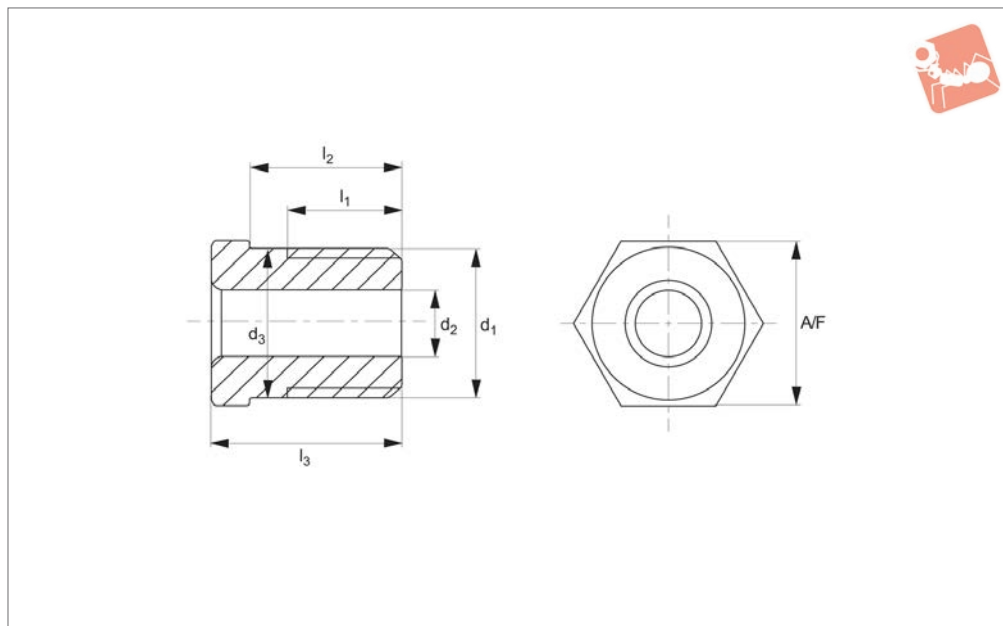
Technical Notes

Mounting blocks provide assembly support

Index plunger must be assembled in hole

Order No.	Type	d_1	d_2	d_3	k	l_1	l_2	l_3 -0.2	l_4	Weight g
32512.W0408	Vertical	M 8x1,0	4.3	M 4	25	35	26	11.5	14	39
32512.W0410	Vertical	M10x1,0	4.3	M 4	25	35	26	11.5	14	36
32512.W0412	Vertical	M12x1,5	4.3	M 4	25	35	26	11.5	14	41
32512.W0416	Vertical	M16x1,5	5.3	M 5	35	47	34	15.5	18	77
32512.W0420	Vertical	M20x1,5	5.3	M 5	35	47	34	15.5	18	68





32752

INDEX PLUNGER & PINS

Material

Steel, nitrided.

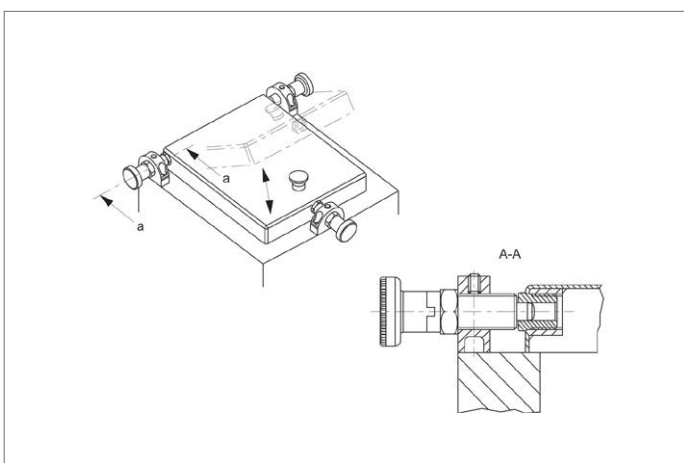
Technical Notes

For use with our wide range of index plun-

gers. Provide a durable location bush for index plunger pins of diameter d_2 . See „for pin dia.“ column in data table and refer to individual index plunger production infor-

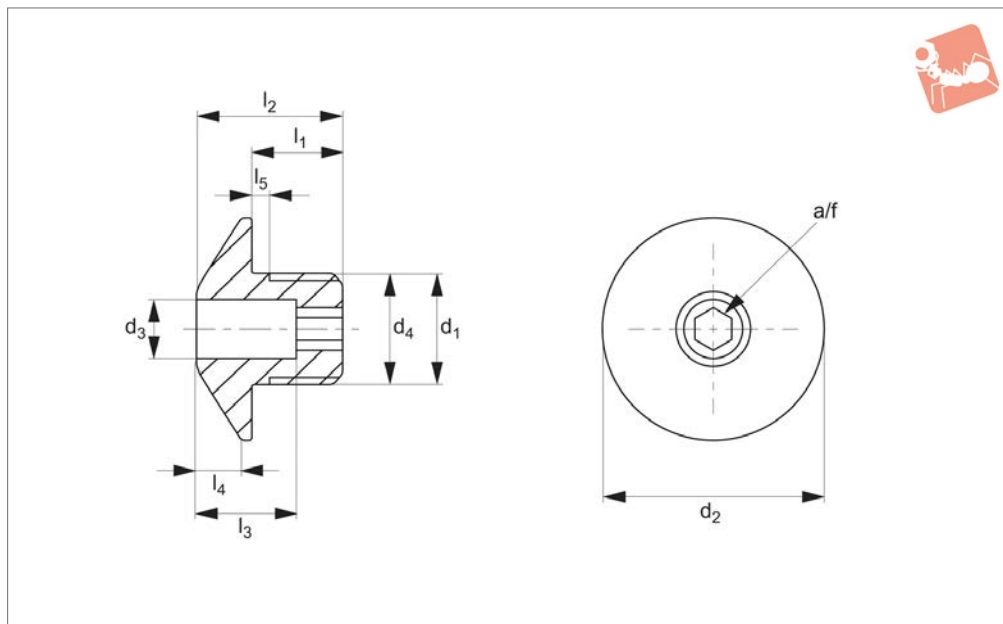
mation for matching pin diameters.

Order No.	d_1	For pin dia.	d_2 +0.1	d_3 ±0.3	l_1 min.	l_2 -0.3	l_3	A/F	Weight g
32752.W0454	M12x1,5	4	4.2	12.1	9	10	13	13	10
32752.W0455	M12x1,5	5	5.2	12.1	9	10	13	13	10
32752.W0456	M12x1,5	6	6.2	12.1	9	10	13	13	9
32752.W0458	M16x1,5	8	8.2	16.1	11	12	15	17	18
32752.W0460	M16x1,5	10	10.2	16.1	11	12	15	17	14
32752.W0462	M16x1,5	12	12.2	16.1	11	12	15	17	9





32753



Material

Body:
Steel: Hardened, blackened
Stainless: Stainless steel hardened

and plungers. Provide a durable location bush for index plunger pins of diameter d_3 , refer to individual index plunger production information for matching pin diameters.

Tips

Low wear option due to hardened material.

Technical Notes

For use with our wide range of index bolts

Order No.	Type	d_1	d_2	d_3 +0,1	d_4 -0,05	l_1	l_2	l_3	l_4	l_5 +0,5	For pin	A/F	Weight g
32753.W0464	Steel	M12x1,5	24	4.2	12	10	16	11	5	1.5	4	4	17
32753.W0465	Steel	M12x1,5	24	5.2	12	10	16	11	5	1.5	5	4	16
32753.W0466	Steel	M12x1,5	24	6.2	12	10	16	11	5	1.5	6	4	16
32753.W0468	Steel	M16x1,5	32	8.2	16	12	20	13	7	1.5	8	6	36
32753.W0470	Steel	M16x1,5	32	10.2	16	12	20	13	7	1.5	10	6	33
32753.W0472	Steel	M16x1,5	32	12.2	16	12	20	13	7	1.5	12	6	33
32753.W0474	Stainless	M12x1,5	24	4.2	12	10	16	11	5	1.5	4	4	17
32753.W0475	Stainless	M12x1,5	24	5.2	12	10	16	11	5	1.5	5	4	16
32753.W0476	Stainless	M12x1,5	24	6.2	12	10	16	11	5	1.5	6	4	16
32753.W0478	Stainless	M16x1,5	32	8.2	16	12	20	13	7	1.5	8	6	36
32753.W0480	Stainless	M16x1,5	32	10.2	16	12	20	13	7	1.5	10	6	33
32753.W0482	Stainless	M16x1,5	32	12.2	16	12	20	13	7	1.5	12	6	33



A Wide Selection of Solutions

- Locating and positioning.
- Indexing.
- Securing.
- Positive locking.
- Rapid adjustment of all kinds of tables, platforms and fixtures.
- Machine and fixture design.
- OEM products.
- Sports equipment.
- Medical aides (wheelchairs etc.).
- Aerospace.
- Machine cabinets.

Applications

Materials

Locking or Non Locking

Handling and Actuation Methods

Mounting Options

Additional Technical Notes

Spring Loads



Steel with plastic grip



Stainless with plastic grip



Stainless body and grip



Locking (park)



Non locking (spring back)



Push pull



Standard grip



Lever grip



T-handle



Pull ring



Threaded for bespoke handle



Fine threaded (standard)



Coarse thread



Flange mount



Thin wall mount



Weldable

- Unless otherwise stated, grips on index plungers are not removable.
- Many of the pins on index plungers are toleranced to either the pin or the hole. Please refer to the specific product table.
- Index plungers are not recommended for shear load applications.

	Pin Tol.	Hole Tol.
①	h_9	+0,03 +0,08
②	-0,02 -0,04	H_7

s Stroke, or movement of plunger's pin.

f₁ The force required in Newtons (N) to overcome the static strength of the spring and achieve initial movement of the plunger's pin.

f₂ The force required in Newtons (N) to fully compress the spring until the pin is fully depressed against the plunger's body.

