

19500

BASE PLATES & CLAMPING ANGLES

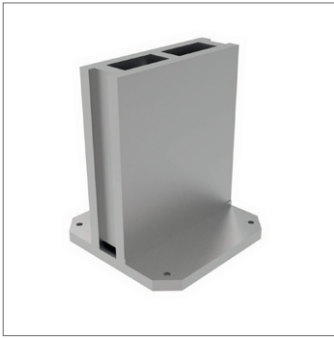
Material

Cast iron (GG30).

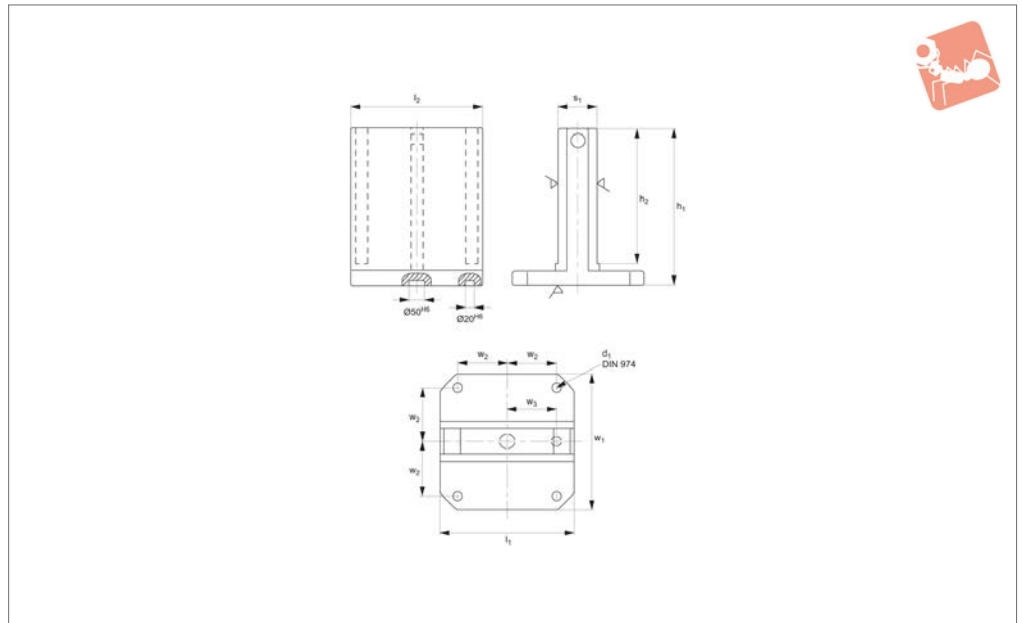
Technical Notes

19510 is the less expensive welded version.

Order No.	$w_1 \times l_1$	w_2 ± 0.2	l_2	l_3 ± 0.2	l_4 ± 0.2	l_5 ± 0.2	d_1	h_1	h_2	s_1 $+1$	No. of holes n	For screw	Weight kg
19500.W0002	400x400	150	-	-	150	150	12	475	400	81	4	M12	150
19500.W0003	400x400	150	500	-	150	150	12	475	400	81	4	M12	173
19500.W0004	500x500	200	-	-	200	200	12	595	500	101	6	M12	284
19500.W0005	500x500	200	630	-	200	200	12	595	500	101	6	M12	334
19500.W0006	630x630	200	-	-	200	200	16	725	630	131	6	M16	470
19500.W0007	800x800	300	-	100	300	300	16	910	800	151	8	M16	745



19510



Material

Steel, welded.

Tips

Lower cost alternative to cast version.

Technical Notes

Special designs upon request.

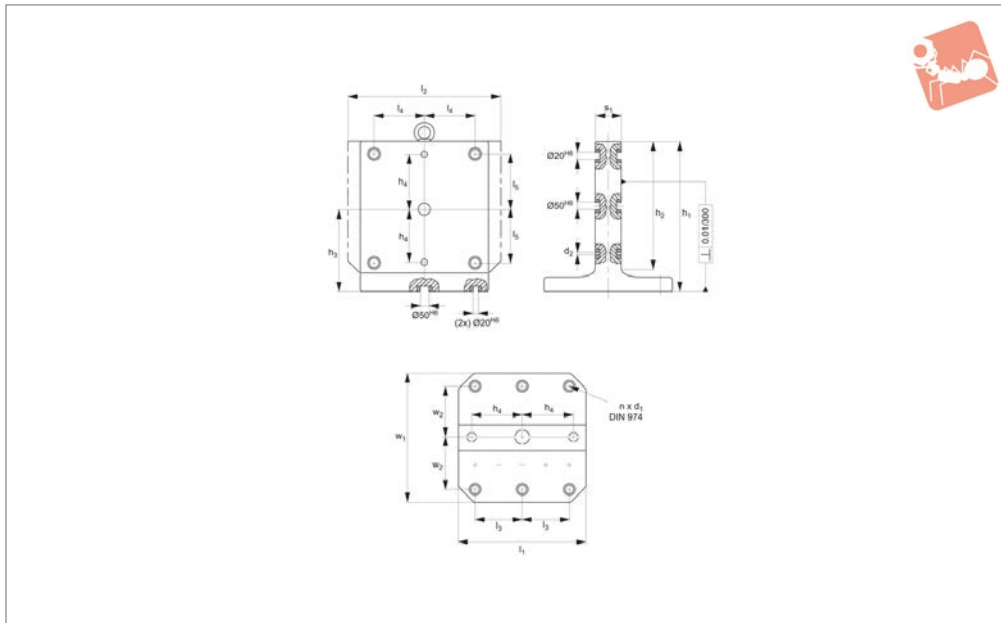
Order No.	$w_1 \times l_1$	w_2 ± 0.2	w_3 ± 0.013	l_2	d_1	h_1	h_2	s_1 $+1$	For screw	Weight kg
19510.W0120	400x400	150	150	400	12	475	425	121	M12	148
19510.W0140	500x500	200	200	500	12	600	545	151	M12	274
19510.W0160	630x630	200	200	630	16	725	660	181	M16	395



Cast Iron Tombstones

fully machined

Base Plates & Clamping



19520

BASE PLATES & CLAMPING ANGLES

Material

Cast iron (GG30).

Order No.	$w_1 \times l_1$	w_2	l_2	l_3 ± 0.2	l_4	l_5	d_1	Weight kg
19520.W0240	400x400	150	400	150	100	100	12	147
19520.W0340	400x400	150	500	150	200	100	12	168
19520.W0440	500x500	200	500	200	200	200	12	295
19520.W0540	500x500	200	630	200	200	200	12	326
19520.W0640	630x630	200	630	200	200	200	16	385

Order No.	h_1	h_2	h_3 ± 0.01	h_4 ± 0.013	s_1 ± 0.02	Number of holes n	For screw
19520.W0240	475	400	275	150	80	4	M12
19520.W0340	475	400	275	150	80	4	M12
19520.W0440	595	500	345	200	100	6	M12
19520.W0540	595	500	345	200	100	6	M12
19520.W0640	725	630	410	200	130	6	M16