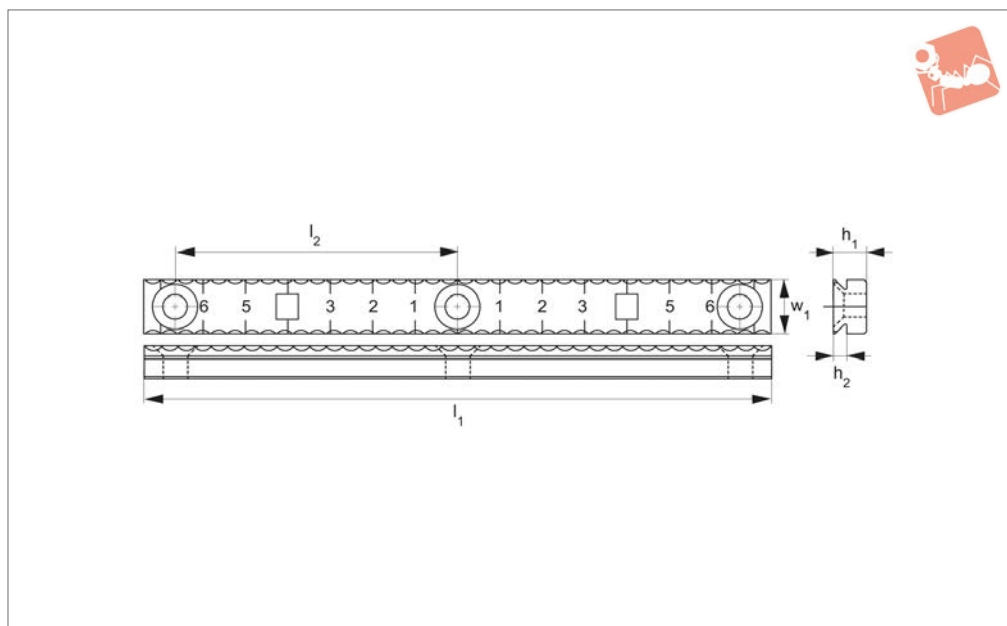




Talongrip Serrated Grip

long

Low Profile Side Clamping



12030

LOW PROFILE SIDE CLAMPING

Material

Steel (S7), heat-treated, black oxide.

Technical Notes

Installation instructions:

1. Set grip in Talongrip jaw, install with screws provided. For fixture, machine slot 0,025mm-0,075mm larger than dimension w_1 , drill and tap.
2. Torque screws to 6,1 Nm. for standard

cap screw and 3,3 Nm. for low head cap screw.

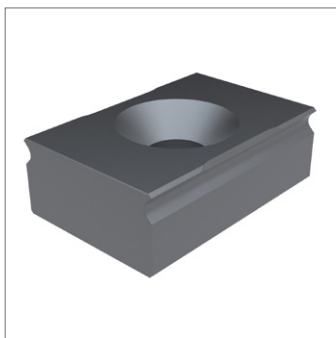
3. Tighten vice until penetration is felt. As a general rule, an additional 1/4-3/4 turn of vice handle is needed to secure the workpiece dependent on material type and vice model. Recommended penetration is 0,15mm-0,40mm.

Tips

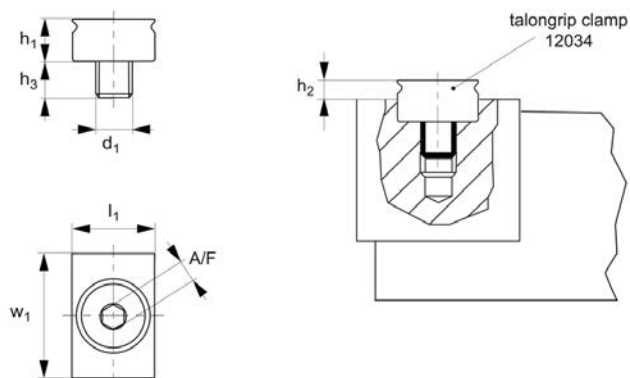
M 5x12 screws provided, as well as 10-32x1/2". Either can be used in M 5 threaded holes as long as they do not exceed 25mm in length.

The 10-32 screws sit better in the gripper rail and are less likely to bind during removal.

Order No.	Qty/pack	h_1	l_1	l_2	w_1	Fits Wixroyd jaw set	Gripping height h_2	Weight g
12030.W0052	2	9.3	50.0	38.1	19.1	12035 & 12464	1,3-4,1	113
12030.W0054	2	7.8	98.8	41.3	12.7	12035	1,3-3,2	181
12030.W0056	2	7.8	148.1	66.7	12.7	12035	1,3-3,2	259



12034



Material

Steel, hardened (HRc 52-54).

Technical Notes

Typically used in conjunction with pitbull

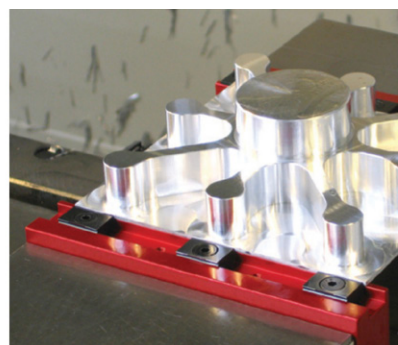
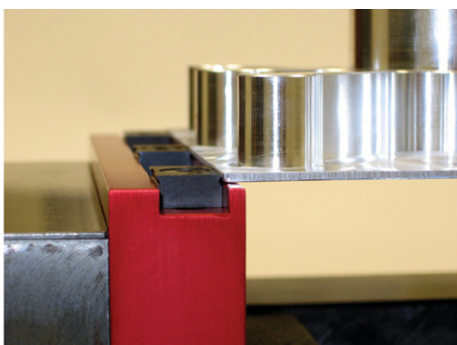
(part no. 12301) or Dynaforce (part no. 12010) clamps.

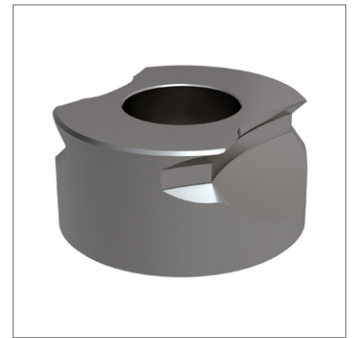
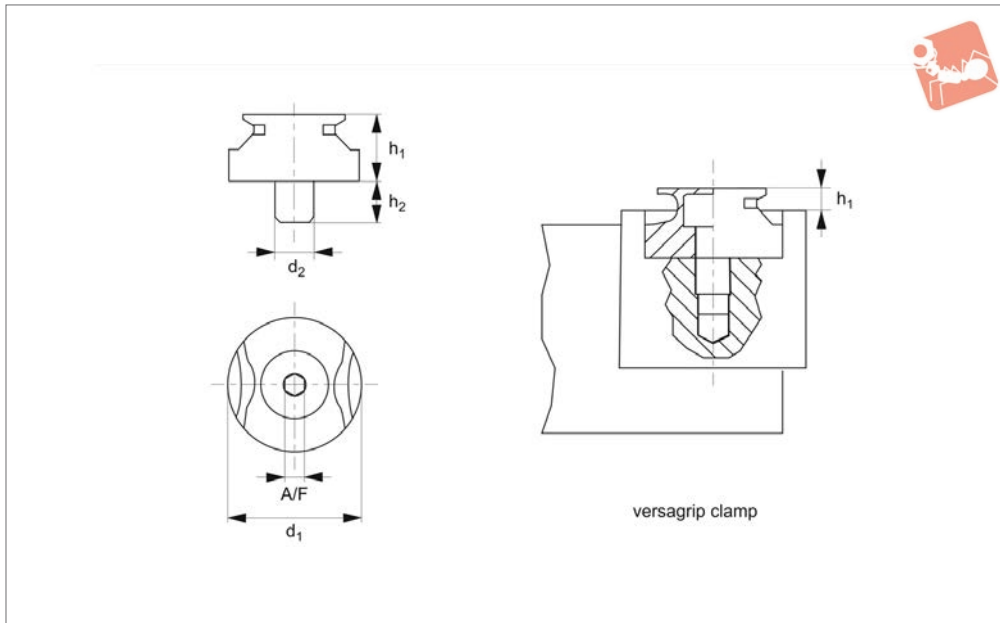
Allows aggressive clamping on as little as 1,5mm of material.

Tips

A further option includes an adaptor to suit 100mm and 150mm vices - see part no. 12035.

Order No.	d_1	Grip height h_2	h_1	h_3	l_1	w_1	A/F	Qty/pack	Weight g
12034.W0050	M 5	1,5 to 1,9	6.4	6.0	12.7	19.1	3	2	12
12034.W0075	M 5	1,5 to 3,0	7.9	8.1	19.1	19.1	3	2	22
12034.W0100	M 5	1,5 to 3,0	7.9	8.1	25.4	19.1	3	2	30
12034.W0150	M 8	1,5 to 5,6	12.7	6.0	25.4	25.4	5	1	37





12036.1

LOW PROFILE SIDE CLAMPING

Material

Steel, hardened (HRC 52-54).

Technical Notes

The hardened grip has penetrating teeth designed to bite into the workpiece

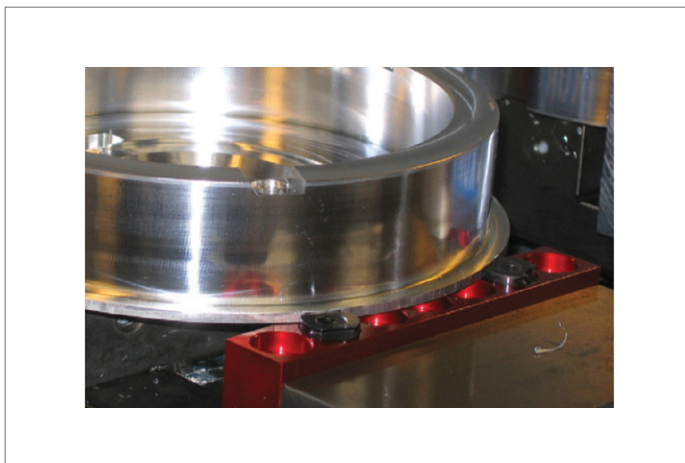
preventing lateral and its horizontal movement.

These grips will even hold flame cut parts and parts with negative drafts.

Tips

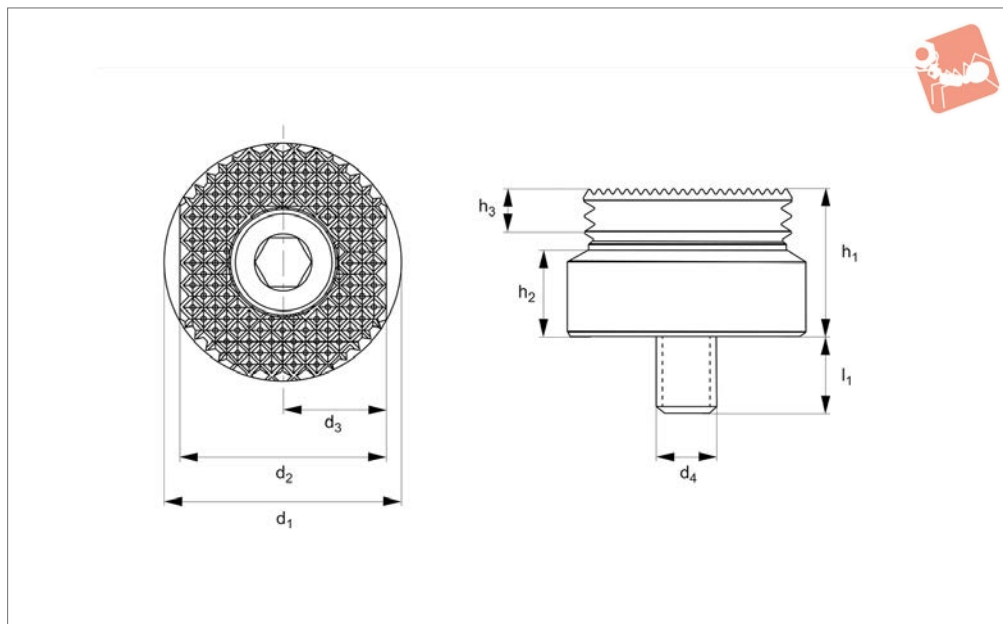
A further option includes an adaptor to suit 100mm and 150mm vices - see part no. 12037.

Order No.	h_1	h_2	d_1	d_2	Grip height h_1	A/F	Qty/pack	Weight g
12036.W0175	9.5	5.9	19.1	M5	1,5 to 3,0	4	2	18





12036.2



Technical Notes

Designed for those aggressive operations on harder materials while providing the versatility to hold just about any shape. Standard gripping height (.200") or

elevated workpiece for cutter clearance around jaws by resting part on the original Versagrip gripper or custom made pucks in the Versa pockets. Rotatable, flat, serrated top face for additional holding force in

horizontal pockets in jaws or hard stops.

Tips

Max. vice torque per pair of grips - 6" vice: 35-40 Lb/Fts (47,5-54,2 Nm.).

Order No.	h_1	h_2	h_3	d_1	d_2	d_3	d_4	l_1	Qty/pack	Weight g
12036.W0570	11.94	6.73	5.21	19,00-19,05	16.61	8.31	M 5	6.05	2	18