

10000

STANDARD MANUAL CLAMPING

Material

Steel, heat-treated and enamelled.

()= Not to DIN standard.

collar nuts, 25000 plain washer.

Technical Notes

To DIN 6314.

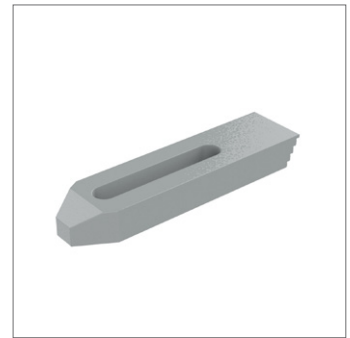
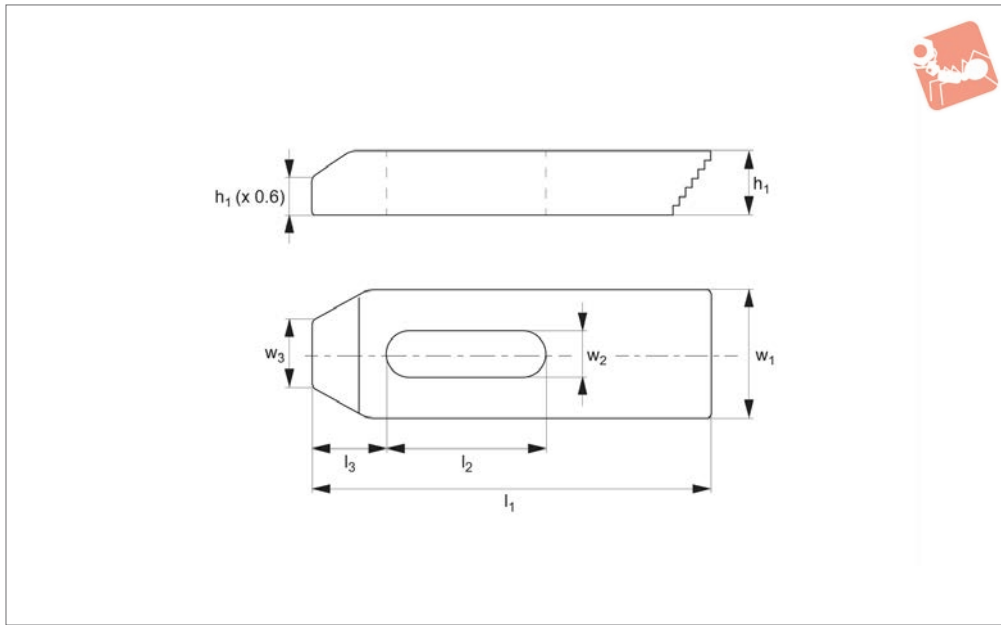
Tips

Used with:

21000 T-slot bolts, 24000 T-nuts, 24400

Order No.	For bolt	For bolt inch	l_1	l_2	l_3	w_1	w_2	w_3	h_1	Weight g
10000.W0007	M 6	1/4"	50	20	10	20	6.6	8	10	63
10000.W0009	M 8	5/16"	60	22	13	25	9.0	10	12	113
10000.W0011	M10	3/8"	80	30	15	30	11.0	12	15	226
10000.W0014	M12, M14	1/2"	100	40	21	40	14.0	14	20	490
10000.W0015	M12, M14	1/2"	125	50	21	40	14.0	14	20	621
10000.W0018	M16, M18	5/8"	125	45	26	50	18.0	18	25	960
10000.W0019	M16, M18	5/8"	160	65	26	50	18.0	18	25	1240
10000.W0022	M20, M22	3/4"	160	60	30	60	22.0	22	30	1787
10000.W0023	M20, M22	3/4"	200	80	30	60	22.0	22	30	2237
10000.W0026	M24	1"	200	80	35	70	26.0	26	30	2580
10000.W0027	M24	1"	250	105	35	70	26.0	26	35	3800
10000.W0034	M30	1-1/4"	250	100	45	80	33.0	34	40	4934
10000.W0035	M30	1-1/4"	315	130	45	80	33.0	34	50	7788
10000.W0043	M36, M42	1-1/2"	400	150	100	100	(43.0)	43	60	15000





10020

STANDARD MANUAL CLAMPING

Material

Steel, heat-treated and enamelled.

14000).

collar nuts, 25000 plain washer.

Technical Notes

To be used with step blocks etc (part no.

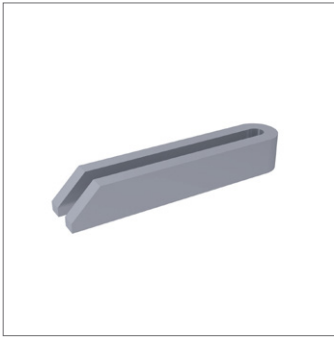
Tips

Used with:

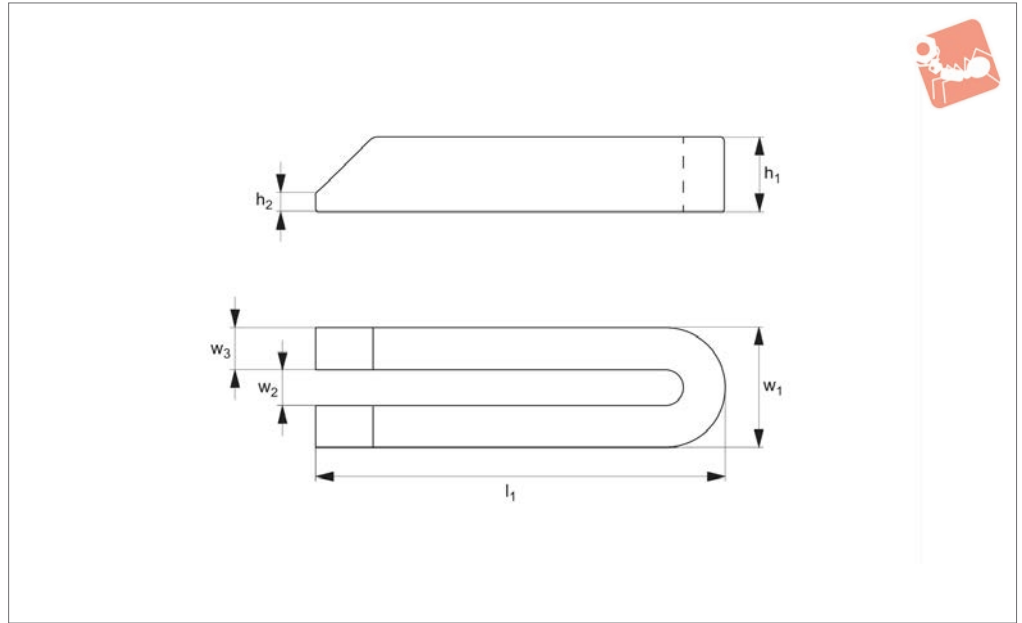
21000 T-slot bolts, 24000 T-nuts, 24400

Order No.	For bolt	For bolt inch	l_1	l_2	l_3	w_1	w_2	w_3	h_1	Weight g
10020.W0007	M 6	1/4"	50	20	10	20	6.6	8	10	55
10020.W0008	M 6	1/4"	80	45	10	20	6.6	8	10	90
10020.W0009	M 8	5/16"	60	22	13	25	9.0	10	12	100
10020.W0010	M 8	5/16"	100	60	13	25	9.0	10	12	180
10020.W0011	M10	3/8"	80	30	15	30	11.0	12	15	200
10020.W0012	M10	3/8"	125	70	15	30	11.0	12	15	350
10020.W0014	M12, M14	1/2"	100	40	21	40	14.0	14	20	450
10020.W0015	M12, M14	1/2"	160	90	21	40	14.0	14	20	770
10020.W0018	M16, M18	5/8"	125	45	26	50	18.0	18	25	900
10020.W0019	M16, M18	5/8"	200	110	26	50	18.0	18	25	1500
10020.W0022	M20, M22	3/4"	160	60	30	60	22.0	22	30	1700
10020.W0026	M24	1"	200	80	35	70	26.0	26	30	2500





10100



Material

Steel, heat-treated and enamelled.

() = Not to DIN standard.

24000 T-nuts, 24400 collar nuts,
25000 plain washer.

Technical Notes

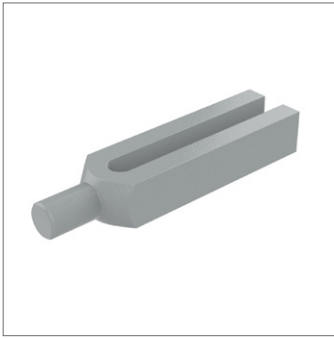
To DIN 6315B.

Tips

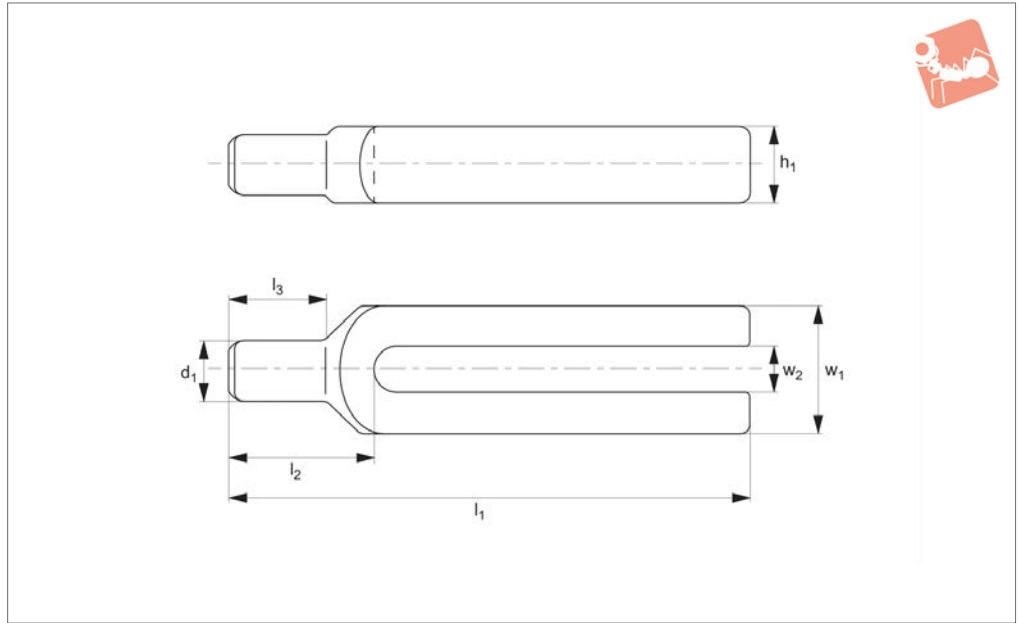
Used with:
26000 clamp support, 21000 T-slot bolts,

Order No.	For bolt	For bolt inch	l_1	w_1	w_2	w_3	h_1	h_2	Weight g
10100.W0007	M 6	1/4"	60	19	6.6	6	12	3	60
10100.W0009	M 8	5/16"	80	25	9.0	8	15	4	140
10100.W0011	M10	3/8"	100	31	11.0	10	20	5	300
10100.W0014	M12, M14	1/2"	125	38	14.0	12	25	6	570
10100.W0015	M12, M14	1/2"	160	38	14.0	12	25	6	730
10100.W0016	M12, M14	1/2"	200	38	14.0	12	25	6	910
10100.W0018	M16, M18	5/8"	160	48	18.0	15	30	8	1080
10100.W0019	M16, M18	5/8"	200	48	18.0	15	30	8	1360
10100.W0020	M16, M18	5/8"	250	48	18.0	15	40	10	2250
10100.W0022	M20, M22	3/4"	200	52	22.0	15	40	10	1800
10100.W0023	M20, M22	3/4"	250	62	22.0	20	40	10	3000
10100.W0024	M20, M22	3/4"	315	62	22.0	20	40	10	3850
10100.W0025	M20, M22	3/4"	500	62	(22.0)	20	50	10	7500
10100.W0026	M24	1"	200	66	26.0	20	40	10	2400
10100.W0027	M24	1"	250	66	26.0	20	40	10	3000
10100.W0028	M24	1"	315	66	26.0	20	40	10	3850
10100.W0029	M24	1"	400	66	(26.0)	20	50	10	5962
10100.W0030	M24	1"	500	66	(26.0)	20	50	10	7600
10100.W0031	M24	1"	600	66	(26.0)	20	50	10	9042
10100.W0032	M24	1"	800	66	(26.0)	20	50	10	12122
10100.W0034	M30	1-1/4"	250	74	33.0	20	50	12	3700
10100.W0035	M30	1-1/4"	315	74	33.0	20	50	12	4750
10100.W0036	M30	1-1/4"	400	74	33.0	20	50	12	6100
10100.W0037	M30	1-1/4"	600	74	(33.0)	20	50	12	9200
10100.W0038	M30	1-1/4"	1000	94	(33.0)	30	60	12	28000
10100.W0040	M36	1-1/2"	400	100	(40.0)	30	60	12	11000
10100.W0041	M36	1-1/2"	600	100	(40.0)	30	60	12	16500
10100.W0042	M36, M42	1-5/8"	600	123	(43.0)	40	80	12	29600





10120



Material

Steel, heat-treated and enamelled.

Technical Notes

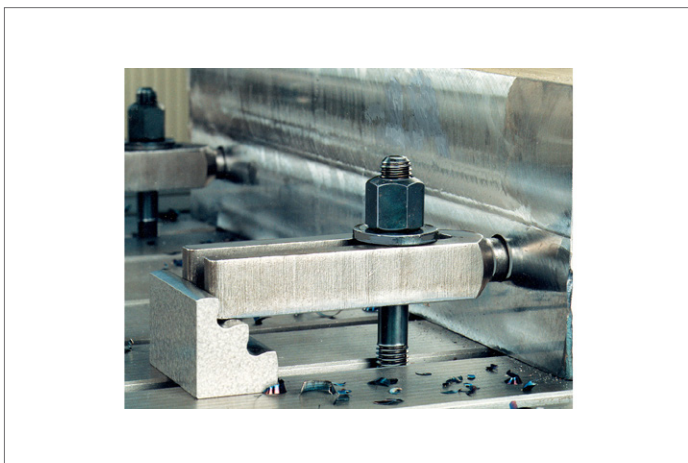
To DIN 6315C.

Tips

Used with:

21000 T-slot bolts, 24000 T-nuts, 24400 collar nuts, 25000 plain washer.

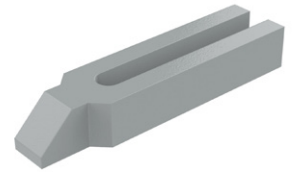
Order No.	For bolt	For bolt inch	l_1	l_2	l_3	w_1	w_2	h_1	d_1	Weight g
10120.W0009	M 8	5/16"	100	30	18	30	9	15	12	220
10120.W0011	M10	3/8"	125	36	24	30	11	20	16	350
10120.W0014	M12, M14	1/2"	160	45	30	40	14	25	20	750
10120.W0015	M12, M14	1/2"	200	45	30	40	14	25	20	950
10120.W0018	M16, M18	5/8"	200	55	36	50	18	30	24	1400
10120.W0019	M16, M18	5/8"	250	55	36	50	18	30	24	1750
10120.W0022	M20, M22	3/4"	250	65	45	60	22	40	30	2700
10120.W0023	M20, M22	3/4"	315	65	45	60	22	40	30	3400
10120.W0026	M24	1"	250	80	56	70	26	40	38	3200
10120.W0027	M24	1"	315	80	56	70	26	40	38	4100
10120.W0034	M30	1-1/4"	315	85	56	80	33	50	45	5700
10120.W0035	M30	1-1/4"	400	85	56	80	33	50	45	7000





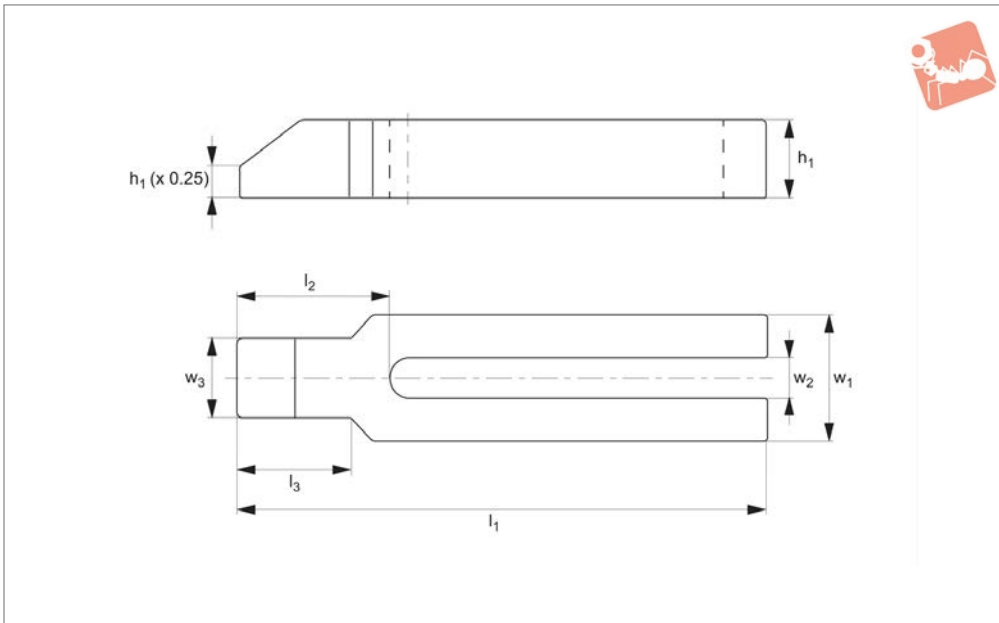
Forked Clamps with shoe

Standard Manual Clam-



10140

STANDARD MANUAL CLAMPING



Material

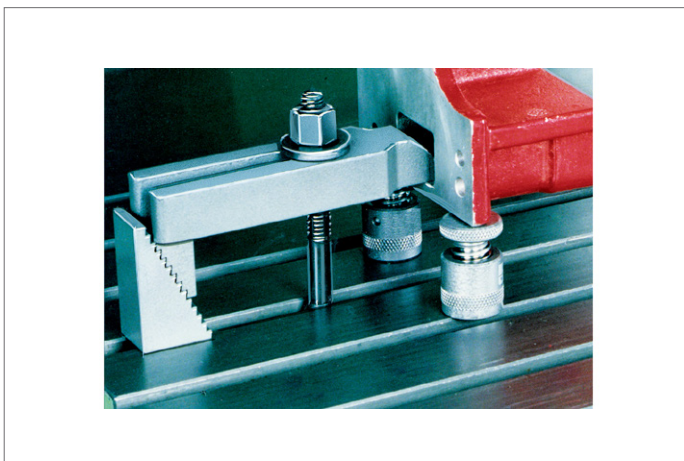
Steel, heat-treated and enamelled.

21000 T-slot bolts, 24000 T-nuts, 24400 collar nuts, 25000 plain washer.

Tips

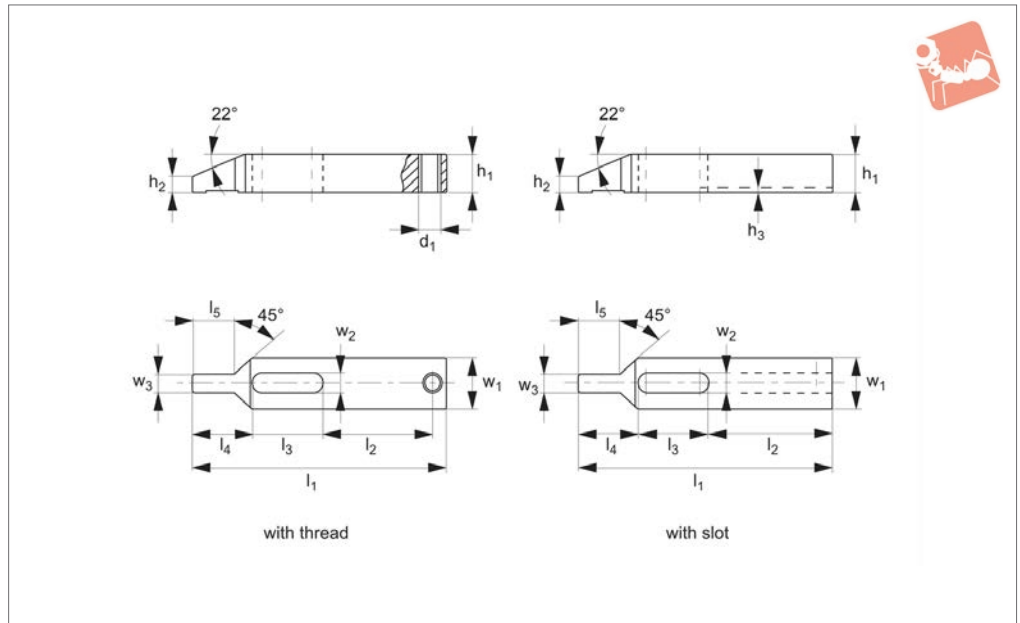
Used with:

Order No.	For bolt	For bolt inch	l_1	l_2	l_3	w_1	w_2	w_3	h_1	Weight g
10140.W0009	M 8	5/16"	100	32	18	30	9	16	15	240
10140.W0011	M10	3/8"	125	38	24	30	11	20	20	380
10140.W0014	M12, M14	1/2"	160	47	30	40	14	24	25	800
10140.W0015	M12, M14	1/2"	200	47	30	40	14	24	25	950
10140.W0018	M16, M18	5/8"	200	57	36	50	18	28	30	1500
10140.W0019	M16, M18	5/8"	250	57	36	50	18	28	30	1850
10140.W0022	M20, M22	3/4"	250	68	45	60	22	35	40	2900
10140.W0023	M20, M22	3/4"	315	68	45	60	22	35	40	3600
10140.W0026	M24	1"	250	83	56	70	26	43	40	3400
10140.W0027	M24	1"	315	83	56	70	26	43	40	4300
10140.W0034	M30	1-1/4"	315	88	56	80	33	50	50	6000
10140.W0035	M30	1-1/4"	400	88	56	80	33	50	50	7300





10160



Material

Steel, heat-treated and blackened.

Technical Notes

The small nose permits clamping even on

difficult to reach areas.

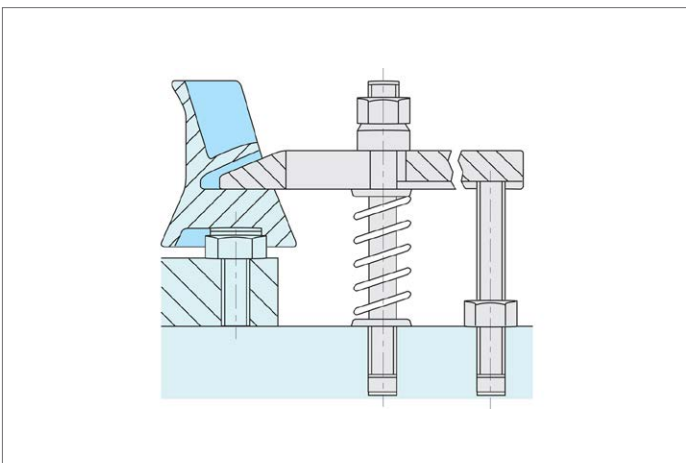
Tips

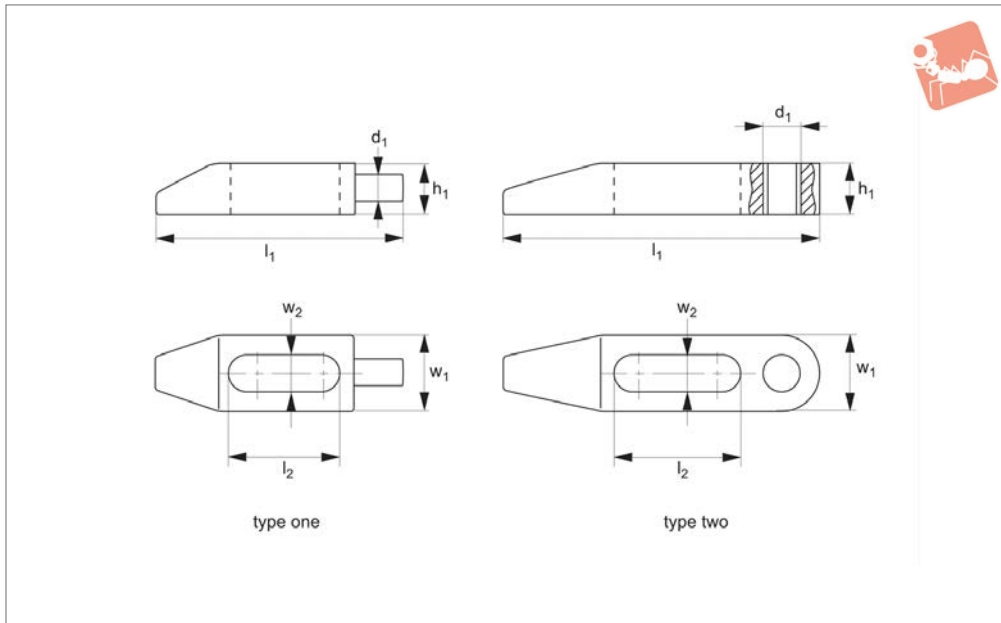
- „With thread“ for vertical adjustment.
- „With slot“ for horizontal adjustment.

Used with:

21000 T-slot bolts, 24000 T-nuts, 24400 collar nuts, 25000 plain washer.

Order No.	Type	l_1	l_2	l_3	l_4	l_5	w_1	w_2	w_3	h_1	h_2	h_3	d_1	Weight g
10160.W0107	With thread	80	34	23	17	13	15	6.6	7.5	8	2.5	-	M 6	54
10160.W0109	With thread	100	42	29	22	17	20	9.0	9.5	12	4.0	-	M 8	133
10160.W0111	With thread	125	52	36	28	21	25	11.0	11.5	15	5.0	-	M10	261
10160.W0113	With thread	150	63	43	34	25	30	13.0	13.5	20	7.0	-	M12	504
10160.W0117	With thread	175	70	52	40	29	35	17.0	15.5	25	9.0	-	M16	828
10160.W0207	With slot	80	34	23	17	13	15	6.6	7.5	8	2.5	2.5	-	50
10160.W0209	With slot	100	42	29	22	17	20	9.0	9.5	12	4.0	3.0	-	127
10160.W0211	With slot	125	52	36	28	21	25	11.0	11.5	15	5.0	3.5	-	251
10160.W0213	With slot	150	63	43	34	25	30	13.0	13.5	20	7.0	4.0	-	488
10160.W0217	With slot	175	70	52	40	29	35	17.0	15.5	25	9.0	4.5	-	812
10160.W0222	With slot	225	-	62	52	33	50	22.0	19.5	35	15.5	5.5	-	2200
10160.W0226	With slot	250	-	71	60	36	60	26.0	21.5	40	17.5	5.5	-	3340





10164

STANDARD MANUAL CLAMPING

Material

Stainless steel (AISI 630,17-4 PH), heat-treated.

both normal and restricted areas with minimum tooling interference.

collar nuts, 25000 plain washer.

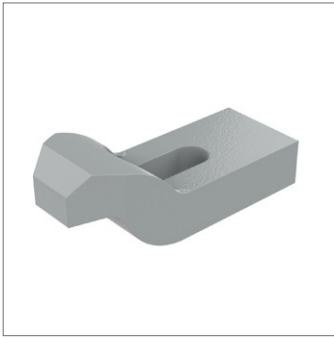
Technical Notes

This is a low profile slotted clamp for use in

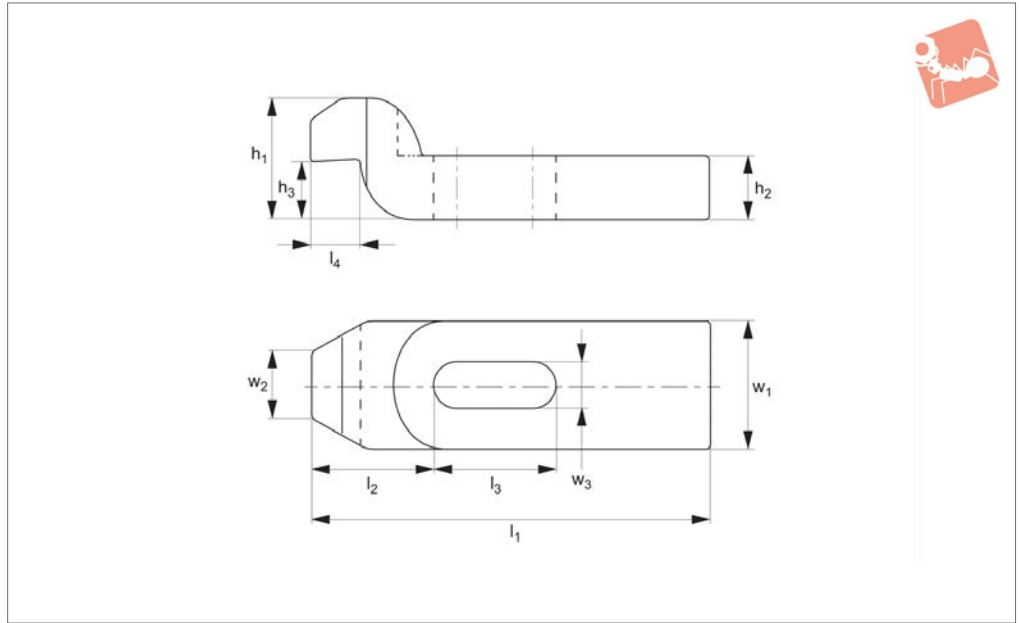
Tips

Used with:
21000 T-slot bolts, 24000 T-nuts, 24400

Order No.	Type	Holding force kN	l_1	l_2	w_1	w_2	h_1	d_1	Weight g
10164.W0092	One	14.2	92	22.0	22.6	10.4	11	9,5 Ø	150
10164.W0127	Two	26.7	127	34.5	25.4	13.4	19	M12	340
10164.W0152	Two	38.2	152	38.1	30.5	16.5	22	M16	600
10164.W0178	Two	69.8	178	38.1	35.6	19.8	27	M20	1130



10200



Material

Steel, heat-treated and enamelled.

() = not to DIN standard.

collar nuts, 25000 plain washer.

Technical Notes

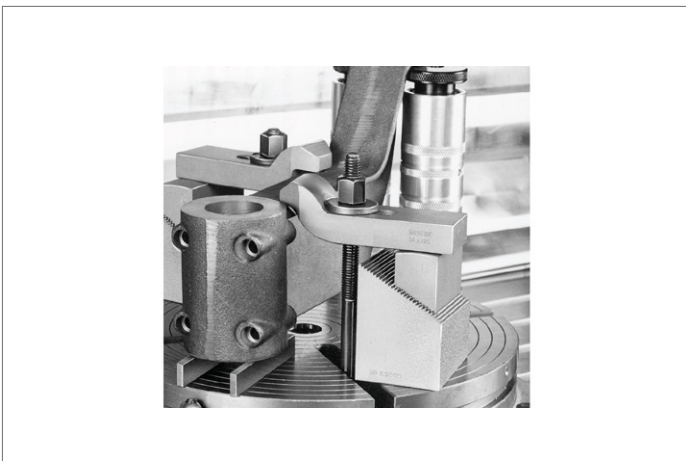
To DIN 6316.

Tips

Used with:

21000 T-slot bolts, 24000 T-nuts, 24400

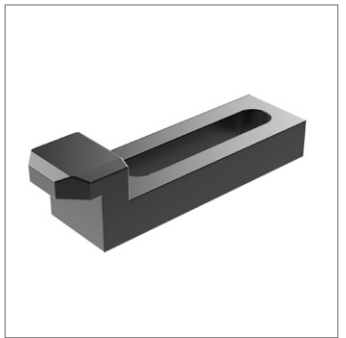
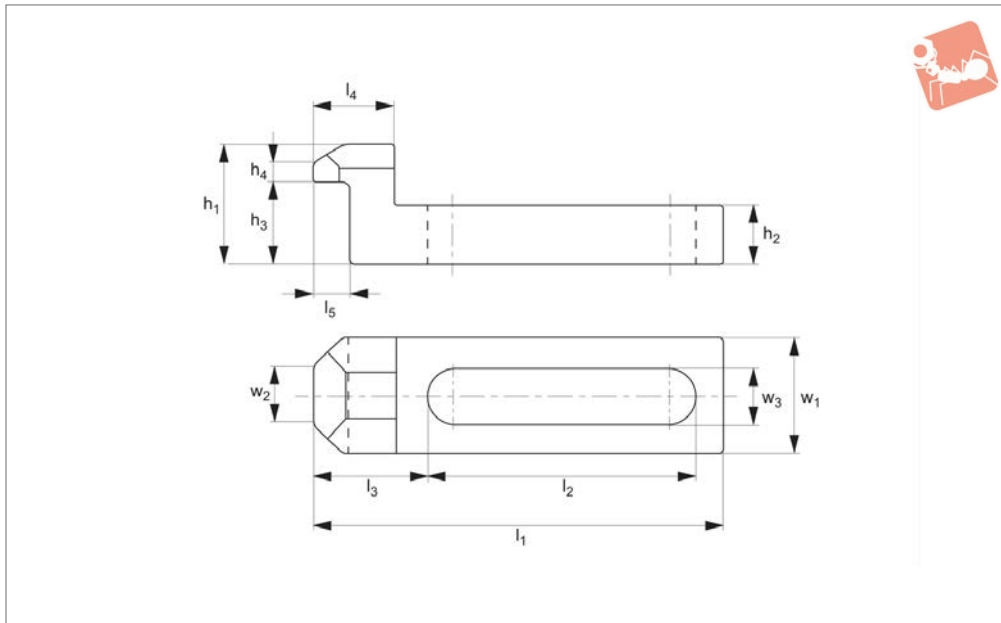
Order No.	For bolt	For bolt inch	l_1	l_2	l_3	l_4	w_1	w_2	w_3	h_1	h_2	h_3	Weight g
10200.W0007	M 6	1/4"	60	22.0	20	8	20	10	6.6	20	10	9	81
10200.W0009	M 8	5/16"	80	27.5	25	9	25	12	9.0	24	12	11	166
10200.W0011	M10	3/8"	100	36.0	32	12	30	15	11.0	30	15	14	299
10200.W0014	M12, M14	1/2"	125	44.0	40	16	40	20	14.0	40	20	18	678
10200.W0018	M16, M18	5/8"	125	51.5	40	20	50	25	(18.0)	50	25	23	1049
10200.W0019	M16, M18	5/8"	160	51.5	50	20	50	25	18.0	50	25	23	1366
10200.W0022	M20, M22	3/4"	160	59.0	55	24	60	30	(22.0)	60	30	27	1911
10200.W0023	M20, M22	3/4"	200	59.0	70	24	60	30	22.0	60	30	27	2417
10200.W0026	M24	1"	200	76.5	60	25	70	35	(26.0)	70	35	32	3315
10200.W0027	M24	1"	250	76.5	80	25	70	35	26.0	70	35	32	4132
10200.W0034	M30	1-1/4"	250	96.0	80	40	80	40	(33.0)	80	40	45	5225
10200.W0035	M30	1-1/4"	315	96.0	100	40	80	40	33.0	100	50	45	8459
10200.W0043	M36, M42	1-1/2"- 1-5/8"	400	105.0	120	50	100	50	(43.0)	120	60	55	17078





Stepped Clamps long slot

Standard Manual Clam-



10210

STANDARD MANUAL CLAMPING

Material

Steel, heat-treated and blackened.

21000 T-slot bolts, 24000 T-nuts, 24400 collar nuts, 25000 plain washer.

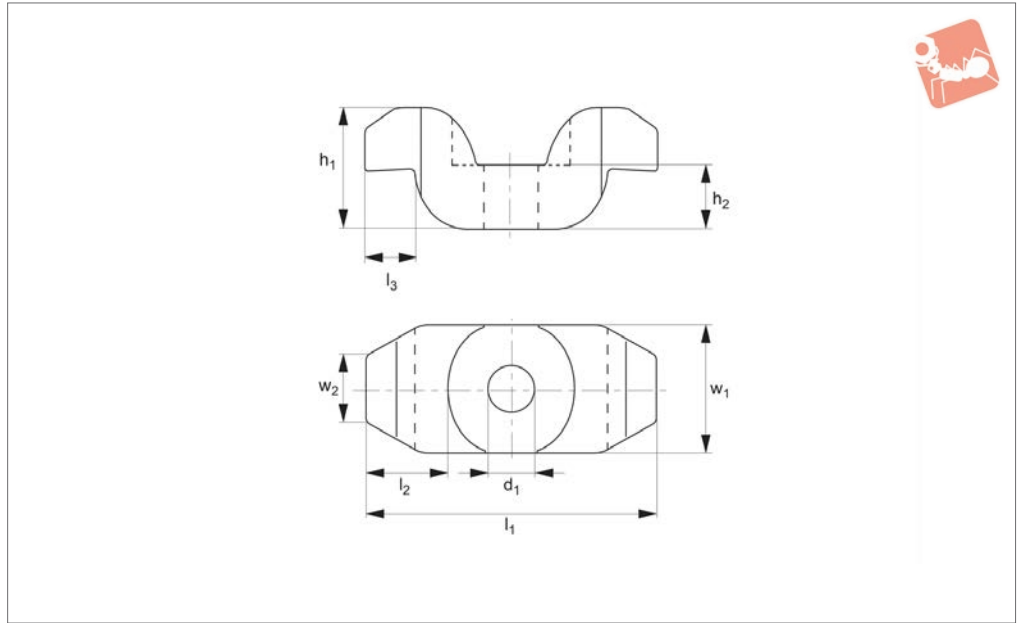
Tips

Used with:

Order No.	For bolt	For bolt inch	l_1	l_2	l_3	l_4	l_5	w_1	w_2	w_3	h_1	h_2	h_3	h_4	Weight g
10210.W0107	M 6	1/4"	55	36	15.5	11	5	15	8	6.6	16	8	11	2	39
10210.W0109	M 8	5/16"	70	46	19.5	15	8	20	10	9.0	20	10	14	3	80
10210.W0111	M10	3/8"	90	58	26.5	19	10	25	12	11.0	25	13	18	4	170
10210.W0113	M12	1/2"	115	75	32.5	24	12	30	15	13.0	32	16	23	5	328



10220



Material

Steel, heat-treated and enamelled.

21000 T-slot bolts, 24000 T-nuts, 24400 collar nuts, 25000 plain washer, 25700 dished washer.

Tips

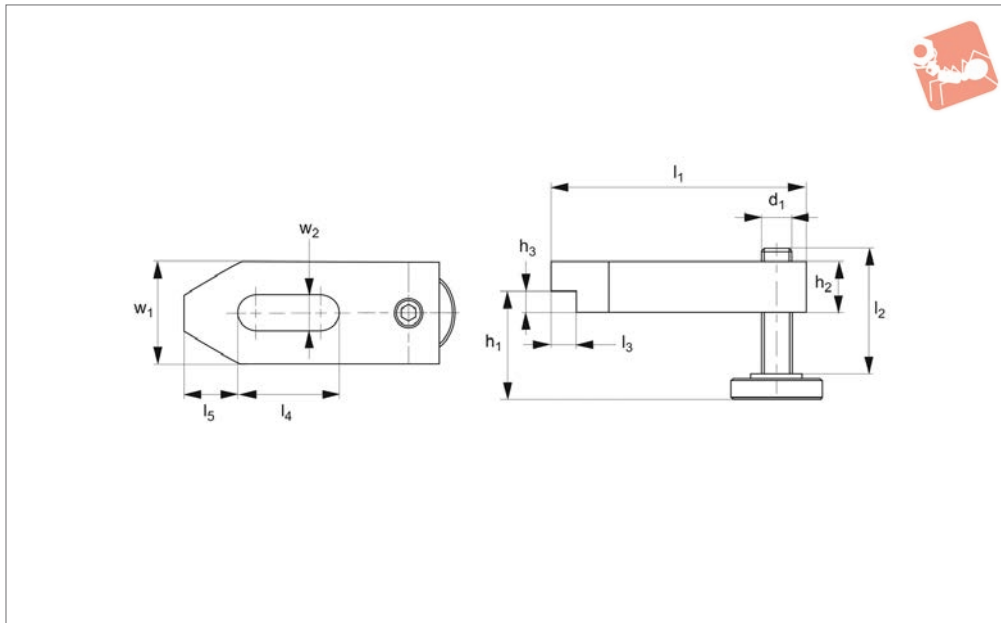
Used with:

Order No.	For bolt	l_1	l_2	l_3	w_1	w_2	h_1	h_2	d_1	Weight g
10220.W0018	M12-M18	100	26	16	40	20	40	20	18	620
10220.W0025	M20-M24	140	38	24	60	30	60	30	25	2040



Stepped Clamp with adjusting support screw

Standard
Manual Clam-



10230

STANDARD MANUAL CLAMPING

Material

Steel, heat-treated and enamelled.

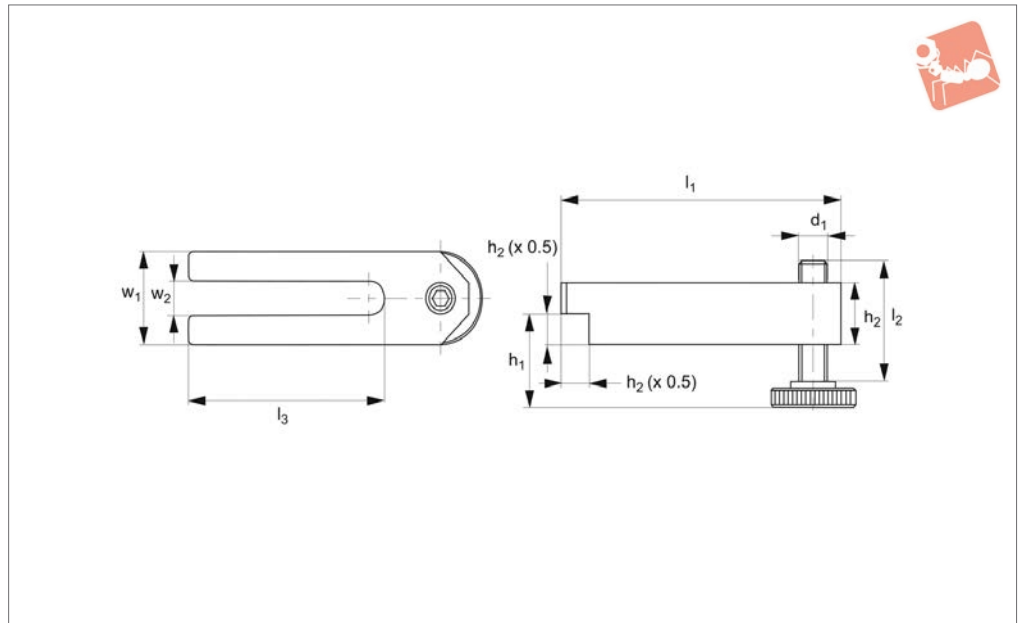
Technical Notes

To clamp thin parts, turn the clamp over.

Order No.	For clamping screw	$d_1 \times l_2$	l_4	l_5	w_1	$w_2 \times l_1$	h_1	h_2	$h_3 \times l_3$	Weight g
10230.W0014	M12, M14	M12x49	40	21	40	14x100	10-55	20	8,0x10,0	580
10230.W0018	M16, M18	M16x55	45	26	50	18x125	13-62	25	10,0x12,5	1140
10230.W0022	M20, M22	M20x69	60	30	60	22x160	16-77	30	12,0x15,0	2100



10240



Material

Steel, heat-treated and enamelled.

Technical Notes

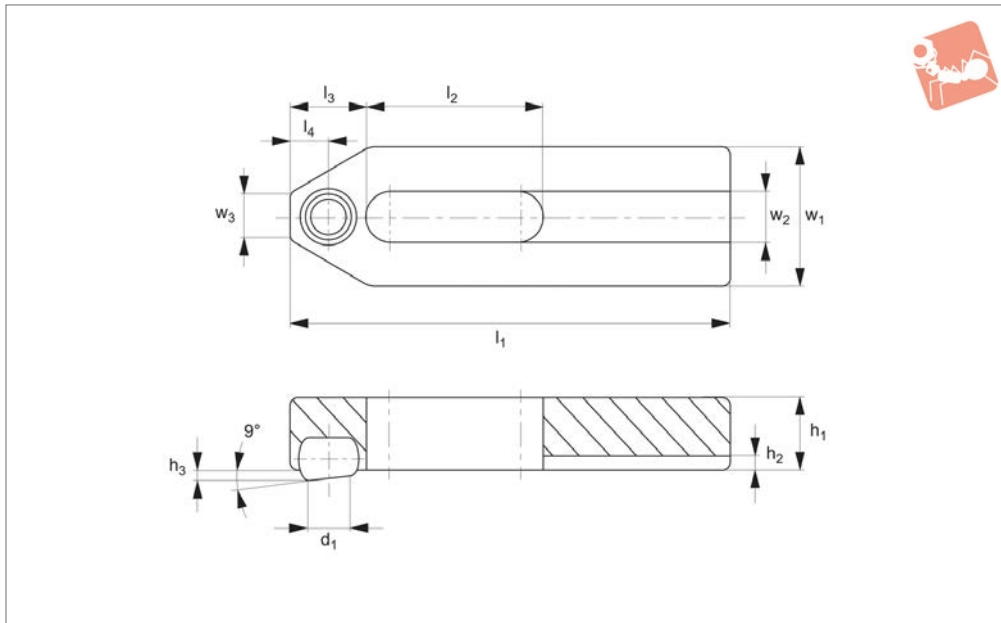
To clamp thin parts, turn the clamp over.

Order No.	For clamping screw	$d_1 \times l_2$	l_3	w_1	$w_2 \times l_1$	h_1	h_2	Weight g
10240.W0010	M10	M10x39	70	30	11x100	8-47	20	330
10240.W0014	M12, M14	M12x49	90	40	14x125	10-59	25	700
10240.W0018	M16, M18	M16x55	110	50	18x160	13-67	30	1300
10240.W0022	M20, M22	M20x69	135	60	22x200	16-85	40	2600



Plain Clamps with self-aligning support

Standard Manual Clam-



10300

STANDARD MANUAL CLAMPING

Material

Body: steel, heat-treated and blackened.
Ball: ball-bearing steel, hardened and bright.

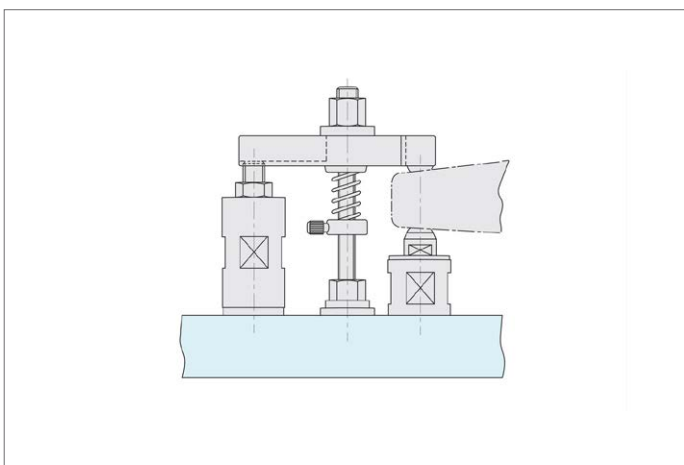
Tips

Provides alignment of the clamp with the workpiece, useful where there is some component variation. For suitable supporting screw see part no. 18400.

Technical Notes

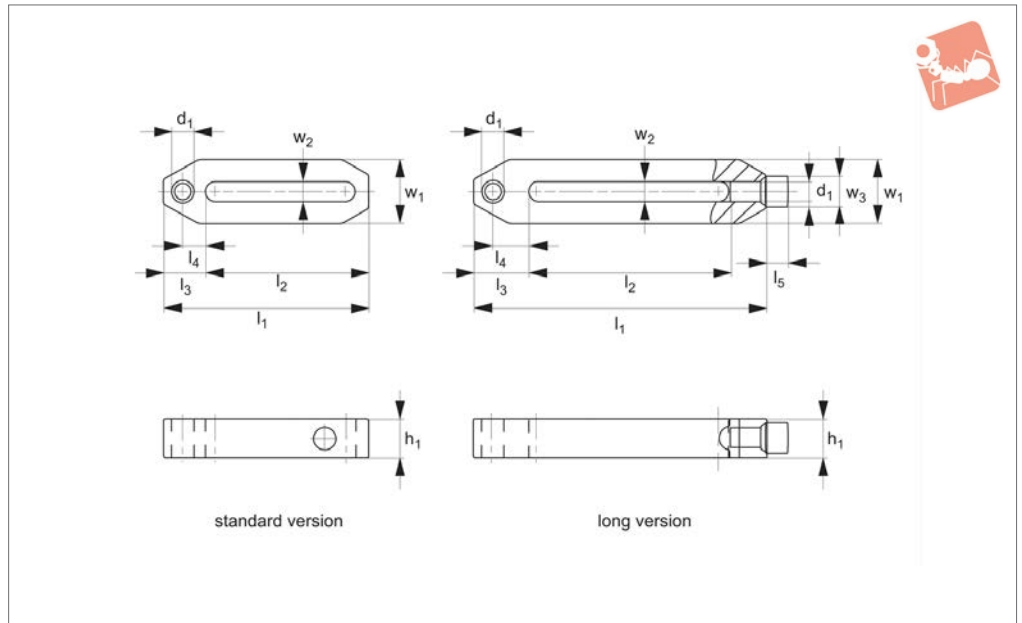
Ball secured against turning.

Order No.	For bolt	For bolt inch	l_1	l_2	l_3	l_4	w_1	w_2	w_3	h_1	h_2	h_3	Ball dia.	d_1	Weight g
10300.W0007	M 6	1/2"	50	20	10	5.0	20	6.6	8	10	2.5	1.6	8.5	5.8	61
10300.W0009	M 8	5/16"	60	22	13	6.5	25	9.0	10	12	3.0	2.0	10.0	7.2	109
10300.W0011	M10	3/8"	80	30	15	7.5	30	11.0	12	15	3.5	2.7	12.0	8.6	219
10300.W0014	M12	1/2"	125	50	21	10.5	40	13.0	14	20	4.0	3.5	16.0	10.5	615





10700



Material

Steel, hardened and blackened.

positioning screw and is particularly useful where long reach is required.

used with these clamps.

Technical Notes

The long version has an adjustable rear

Tips

Self-aligning pads (part no. 34100) can be

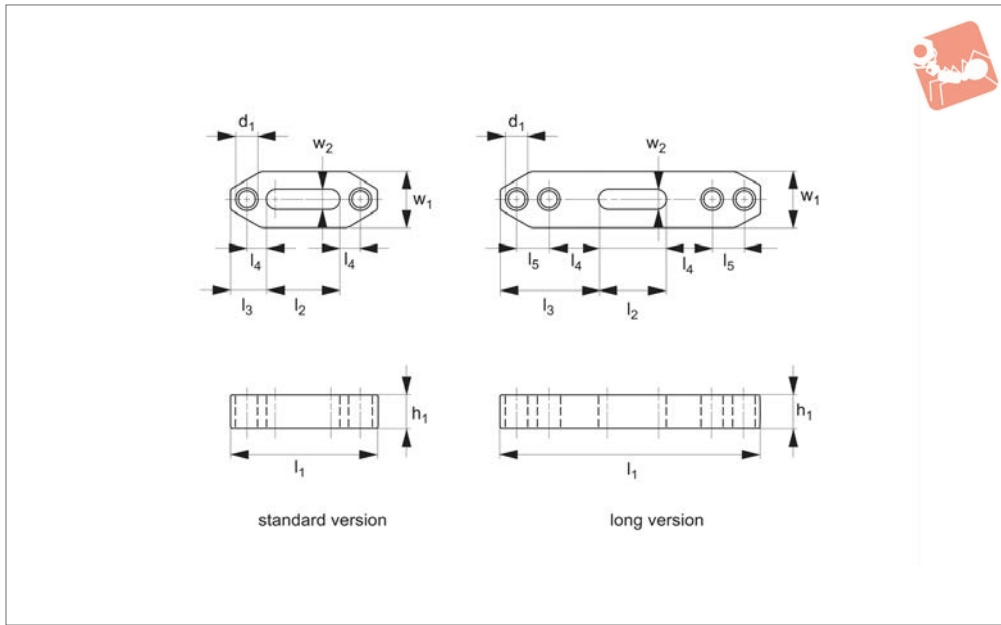
Order No.	Type	Size	$h_1 \times w_1$	l_1	l_2	l_3	l_4	l_5	w_2	w_3	d_1	Weight g
10700.W0012	Standard	12	20x35,0	110	82	21.5	11.5	-	12.5	-	M12	340
10700.W0016	Standard	16	30x40,0	142	107	28.0	15.0	-	17.0	-	M16	770
10700.W0020	Standard	20	40x50,0	200	150	38.0	21.0	-	21.0	-	M20	1800
10700.W0112	Long	12	20x35,0	156	106	30.0	20.0	12	12.5	18	M12	600
10700.W0116	Long	16	30x45,5	196	136	35.0	22.0	16	17.0	24	M16	1400
10700.W0120	Long	20	40x60,0	298	221	47.0	30.0	20	21.0	30	M20	3900



Double Ended Straight Clamp



Standard
Manual Clam-



10740

STANDARD MANUAL CLAMPING

Material

Steel, hardened and blackened.

same time.

Technical Notes

Ideal for clamping two similar parts at the

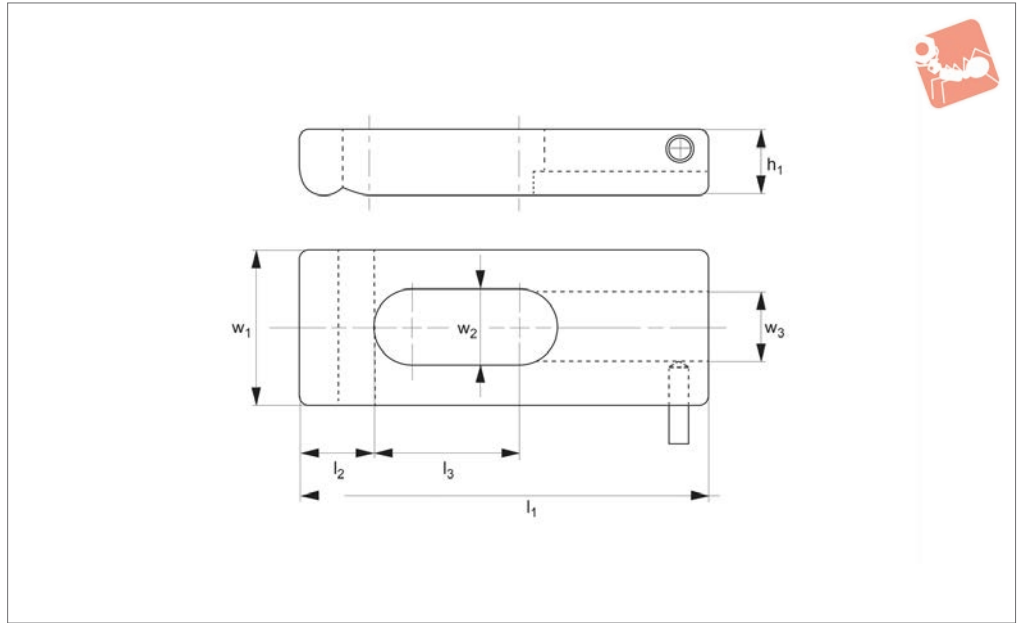
Tips

Self-aligning pads (part no. 34100) can be used with these clamps.

Order No.	Type	Size	$h_1 \times w_1$	l_1	l_2	l_3	l_4	l_5	w_2	d_1	Weight g
10740.W0012	Standard	12	15x30	80	33	23.5	13.5	-	12.5	M12	200
10740.W0016	Standard	16	25x40	100	42	29.0	16.0	-	17.0	M16	525
10740.W0112	Long	12	20x30	160	33	63.5	33.5	20	12.5	M12	610
10740.W0116	Long	16	30x40	200	42	79.0	41.0	25	17.0	M16	1480



18200



STANDARD MANUAL CLAMPING

Material

Steel, heat-treated.

Technical Notes

To be used with supporting screw no. 18400.

Order No.	l_1	l_2	l_3	w_1	w_2	w_3	h_1	Weight g
18200.W0001	100	13.5	37	30	15	12.5	20	350
18200.W0002	125	24.5	50	40	19	12.5	20	590